

FIVE BRYANT PARK

HIGH-END, PLUG-AND-PLAY SUBLEASE
AVAILABLE NOW AT 5BP



Space Details:

Space: Partial 13th Floor

Size: 20,624 RSF

Term: Thru Sept. 30, 2029

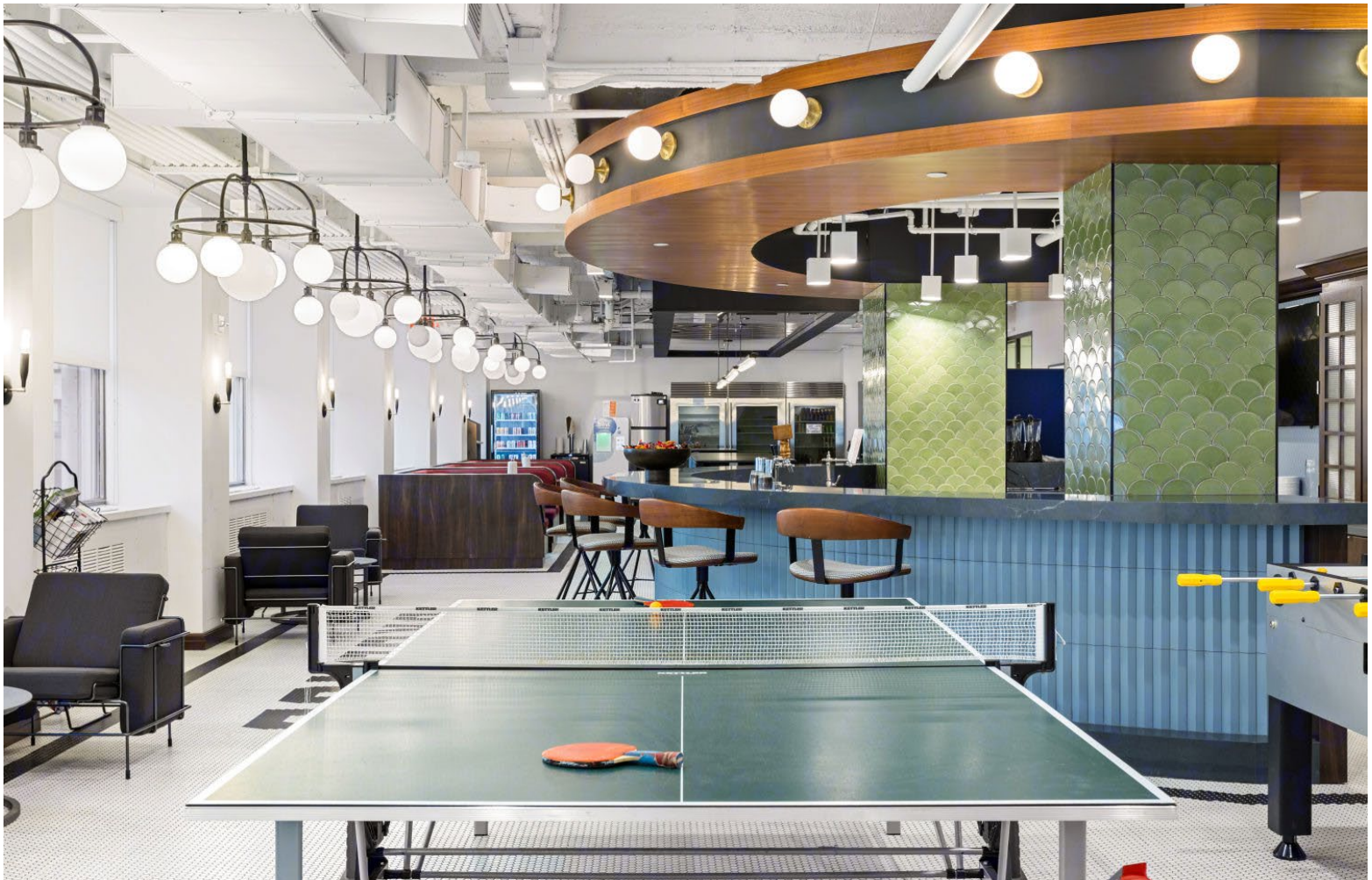
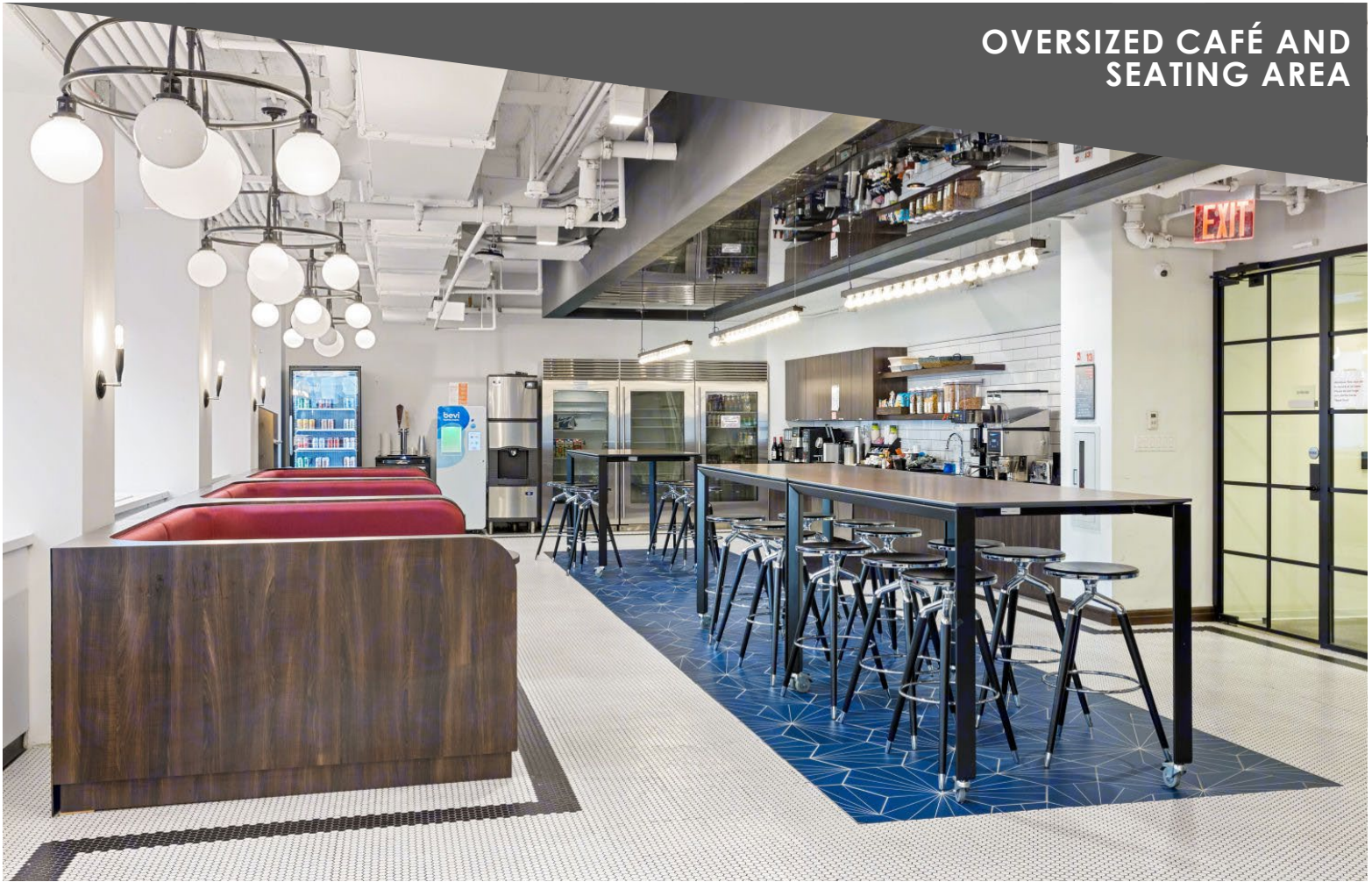
Possession: Immediate

Opportunity Highlights:

- Move-in ready space with FF&E in place
- Open and creative installation with ample conferencing space
- Oversized café which features a newly built bar area
- Light and views of Bryant Park
- Direct elevator presence off the lower elevator bank

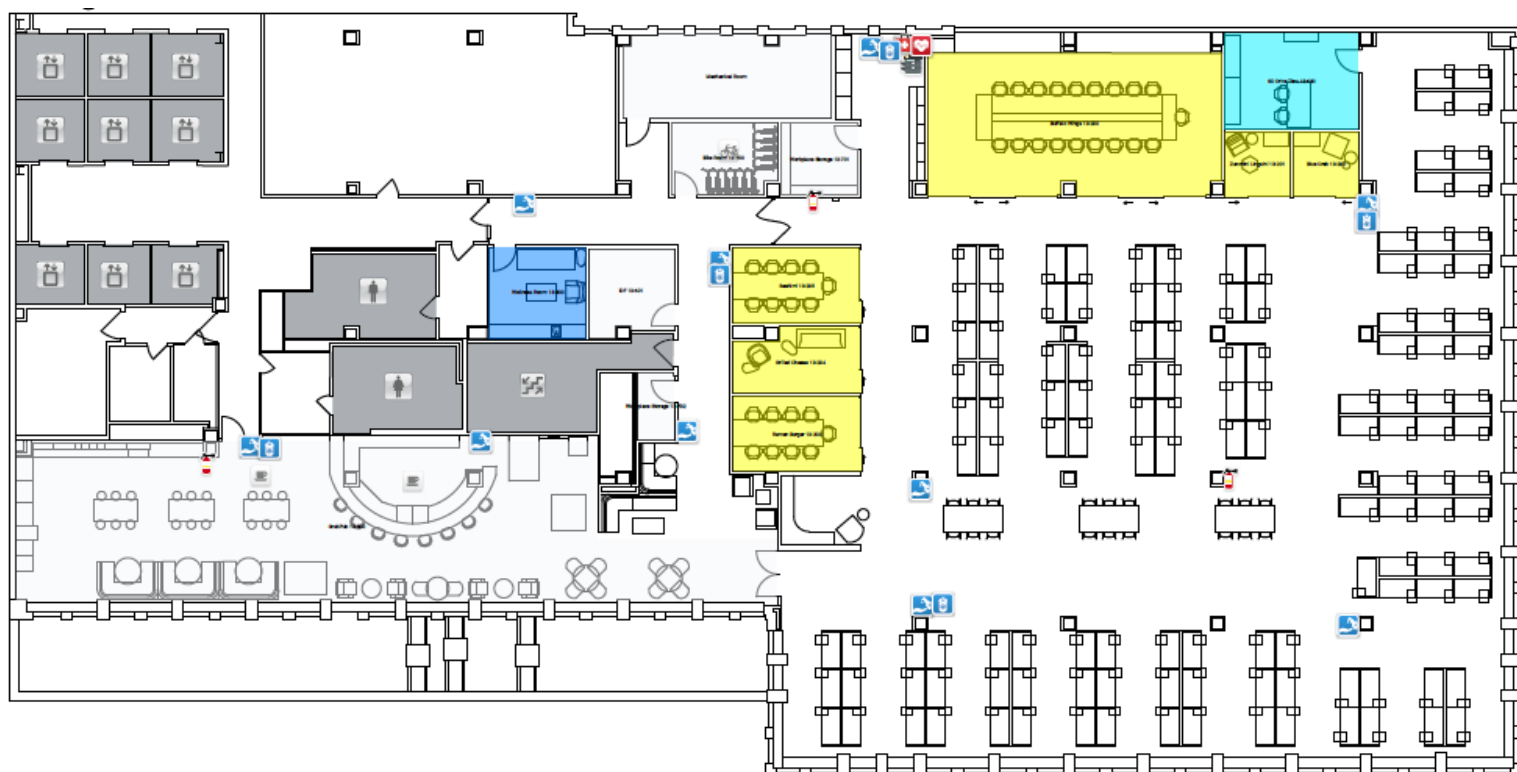


OVERSIZED CAFÉ AND SEATING AREA





FLOOR PLAN



- ✓ 3 Office / Mixed Use Rooms
- ✓ 1 Large Boardroom
- ✓ 3 Conference Rooms
- ✓ Open seating for 125+