

3

PARK AVENUE

SUBLEASE OPPORTUNITY



FLOOR / AREA

Entire 18th Floor 22,722 RSF

Entire 21st Floor 22,722 RSF

POSSESSION

Immediate

ASKING RENT

Upon Request

SUBLEASE TERM

December 30, 2027

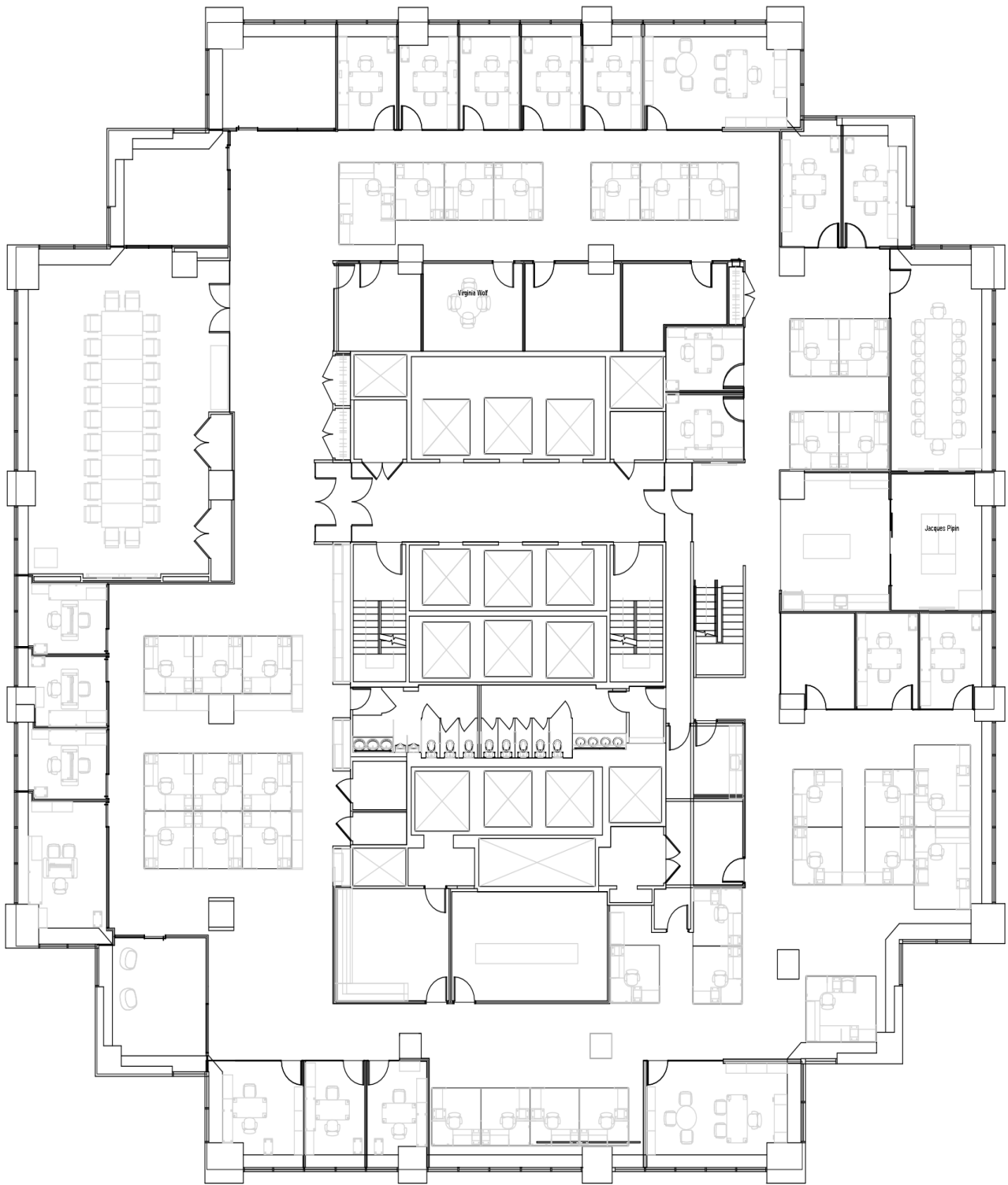
COMMENTS

- Existing above standard installation with mix of offices, conference rooms and open areas
- Internal staircase between the 18th and 19th floors, as well as the 23rd & 24th floors
- Great light and views
- Floors can be leased together or separately
- Furniture and technology can be made available
- Efficient center core floor plates
- New lobby to be completed by 4Q2021
- Close Proximity to transportation; Grand Central and Penn Station



FLOOR PLANS
Entire 18th Floor - **22,722 RSF**

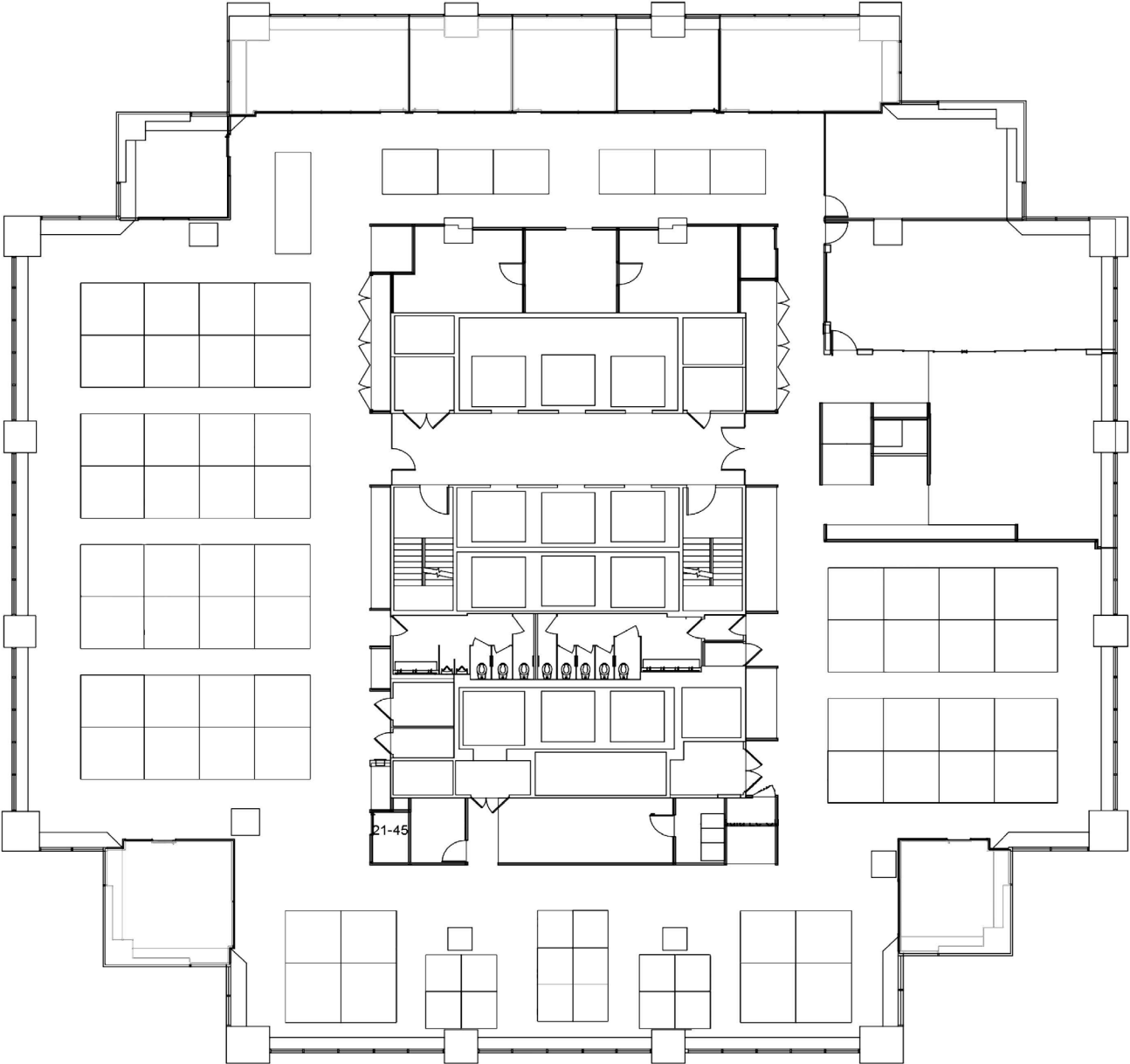
LEXINGTON AVENUE



PARK AVENUE

FLOOR PLANS
Entire 21st Floor - **22,722 RSF**

LEXINGTON AVENUE



PARK AVENUE



3

PARK AVENUE

SUBLEASE OPPORTUNITY