



520 Madison

Entire 27TH Floor 23,411 RSF

Possession: Immediate
Term: Through 05/30/2031



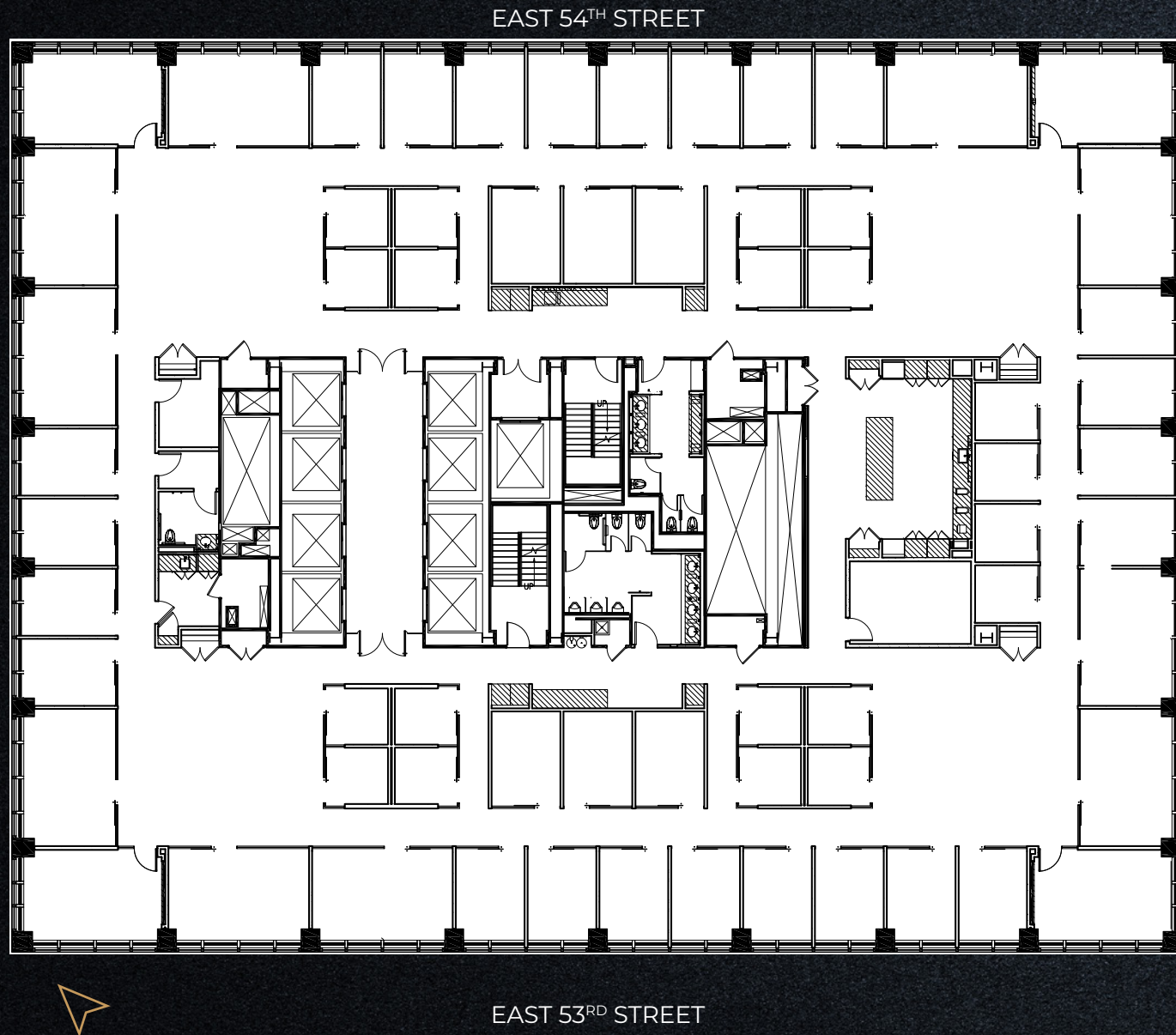
- Built space
- Central Park views with terrific light in all directions
- Column free floor plates
- Financially strong sublandlord

520 Madison Avenue offers breathtaking views of the neighborhood and the **New York City skyline** from its high floors. Tenants and visitors can enjoy views of **Central Park** and **Manhattan**.



ENTIRE 27TH FLOOR





ENTIRE 27TH FLOOR

—
EXISTING
CONDITION

Total Offices	60
Workstations	16
Conference Rooms	4
Receptionist	0
Total Personnel	80