

# 520 MADISON AVE



## Furnished Full Floor with Central Park Views

ENTIRE 33<sup>RD</sup> FLOOR AVAILABLE FOR SUBLEASE

ENTIRE 33<sup>RD</sup> FLOOR

23,411 RSF

POSSESSION: IMMEDIATE

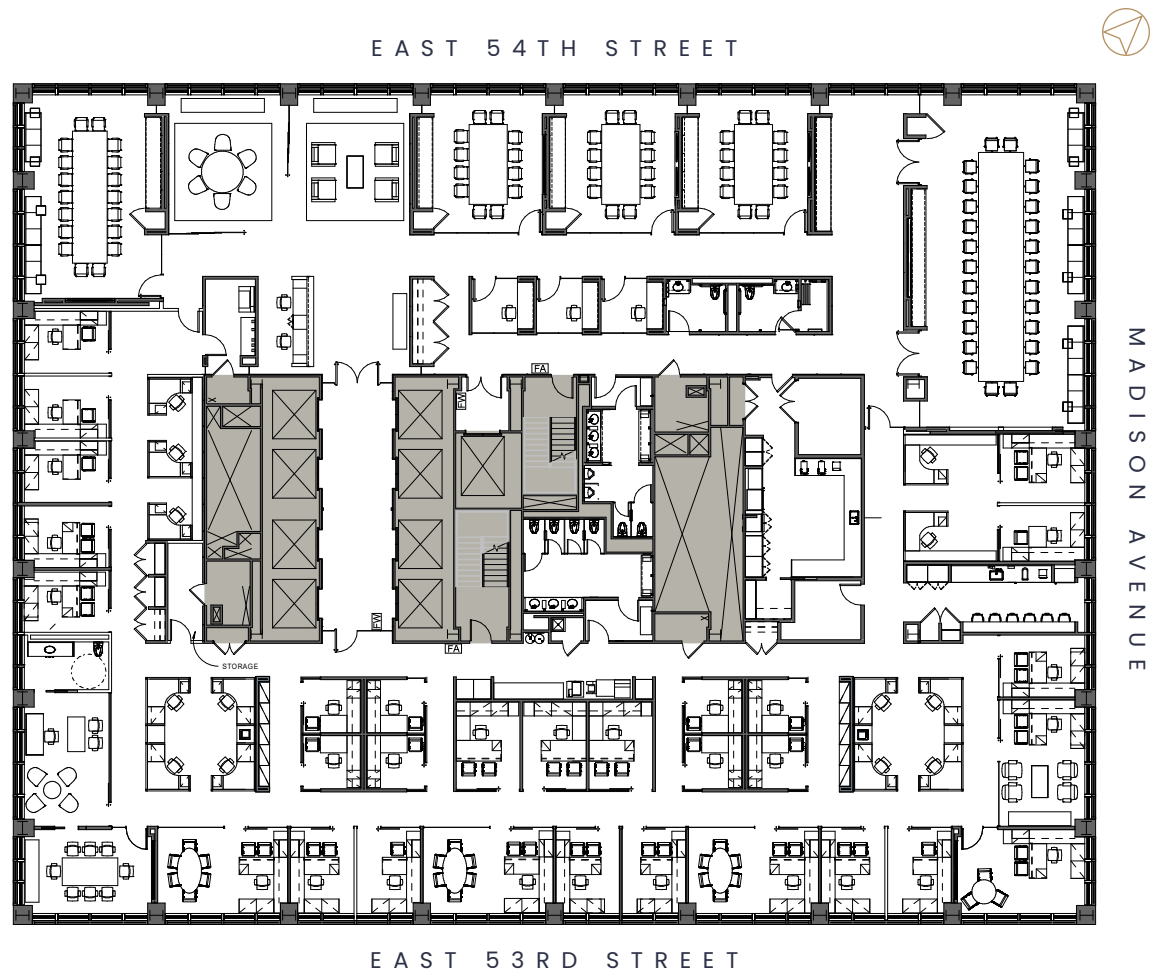
TERM: 3/30/2026 OR 5/29/2031

## COMMENTS:

- Elegantly appointed financial services space
- Great Central Park views
- Full floor presence
- Fully built, furnished & wired

## SPACE DETAILS:

- Conference wing featuring 2 board rooms, 3-4 large conference rooms with 3 phone rooms & private bathrooms;
- 20 windowed offices;
- 13 workstations;
- 11 interior offices;
- Catering kitchen and pantry area







# 520 MADISON AVE

