



REDISCOVER 575 MADISON AVE FROM THE INSIDE OUT

LOCATION RENOVATION VALUE

Situated on the corner of **57TH STREET, ON A DOUBLE-WIDE AVENUE** and steps to Central Park, **575 MADISON AVE** recently completed a stunning lobby renovation that is both inviting and bold—showcasing a unique application of materials with a vibrant rotating art gallery. In addition, ownership is constructing a **TENANT-EXCLUSIVE AMENITY CENTER** on the top floor that will feature conferencing and lounge space with an outdoor terrace.

The **ELEVATED TENANT EXPERIENCE** you feel the moment you step inside the building, coupled with the **SIGNIFICANT VALUE** in one of the **MOST STYLISH NYC NEIGHBORHOODS**, warrants a fresh look at this matchless opportunity.



THE NEWLY DESIGNED LOBBY

BLENDS MATERIALS & TONES TO BRIGHTEN AND ACTIVATE THE SPACE.
LOCAL & EMERGING ARTISTS ARE FEATURED THROUGHOUT.



THE PENTHOUSE AMENITY CENTER

OFFERS TENANTS EXCLUSIVE CONFERENCING
AND LOUNGE SPACE, WHICH FEATURES AN OUTDOOR TERRACE.

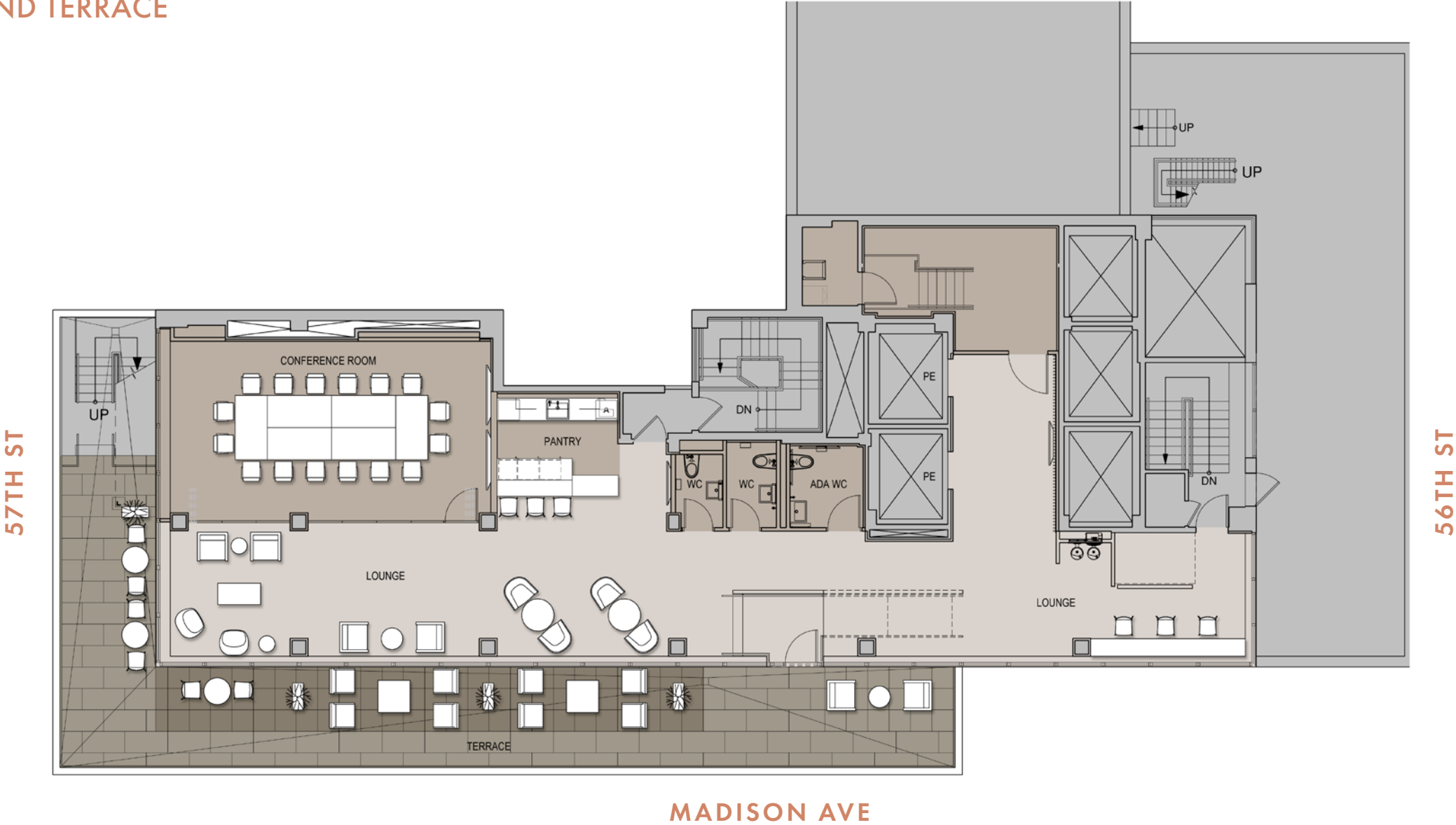




PENTHOUSE AMENITY CENTER + TERRACE

PENTHOUSE AMENITY CENTER PLAN

CONFERENCE ROOM, PANTRY, LOUNGE SPACE, +
WRAPAROUND TERRACE



575 IS MOVE-IN READY

RECENTLY COMPLETED 8TH FLOOR PRE-BUILT



RECEPTION AREA

 [Click for Virtual Tour](#)

FUNCTIONAL + LIGHT-FILLED AREAS



THOUGHTFULLY DESIGNED WORK AREAS





DEDICATED PANTRY + SOCIAL SPACE

NUMEROUS PRIVATE TERRACE OPPORTUNITIES
THROUGHOUT THE BUILDING

PRIVATE TENANT TERRACE - 17TH FLOOR

OPEN OFFICE TEST-FIT

FLOORS 8-10: 24,794 RSF

PERSONNEL

SPACE TYPE	PLAN	
Private Office	4	
Workstation	138	
Receptionist	1	
Mail Personnel	1	
Total	144	
Office : Workstation	3%	97%
RSF/person	172	RSF/P

COLLABORATION

SPACE TYPE	SEATS	PLAN	
		SPACE	SEATS
Conference	20	1	20
Conference	12	1	12
Conference	8	2	16
Conference	6	3	18
Meeting	4	1	4
Meeting	3	3	9
Phone Room	2	3	6
Café	19	1	19
Lounge	11	1	11
Total		16	115
Collaborative Seats/Person:		0.80/Person	



OFFICE INTENSIVE TEST-FIT

FLOORS 8-10: 24,794 RSF

PERSONNEL

SPACE TYPE	PLAN
Large Private Office	5
Private Office	31
Interior Office	8
Total Offices	44
Workstation	16
Receptionist	1
Mail Personnel	2
Total	63

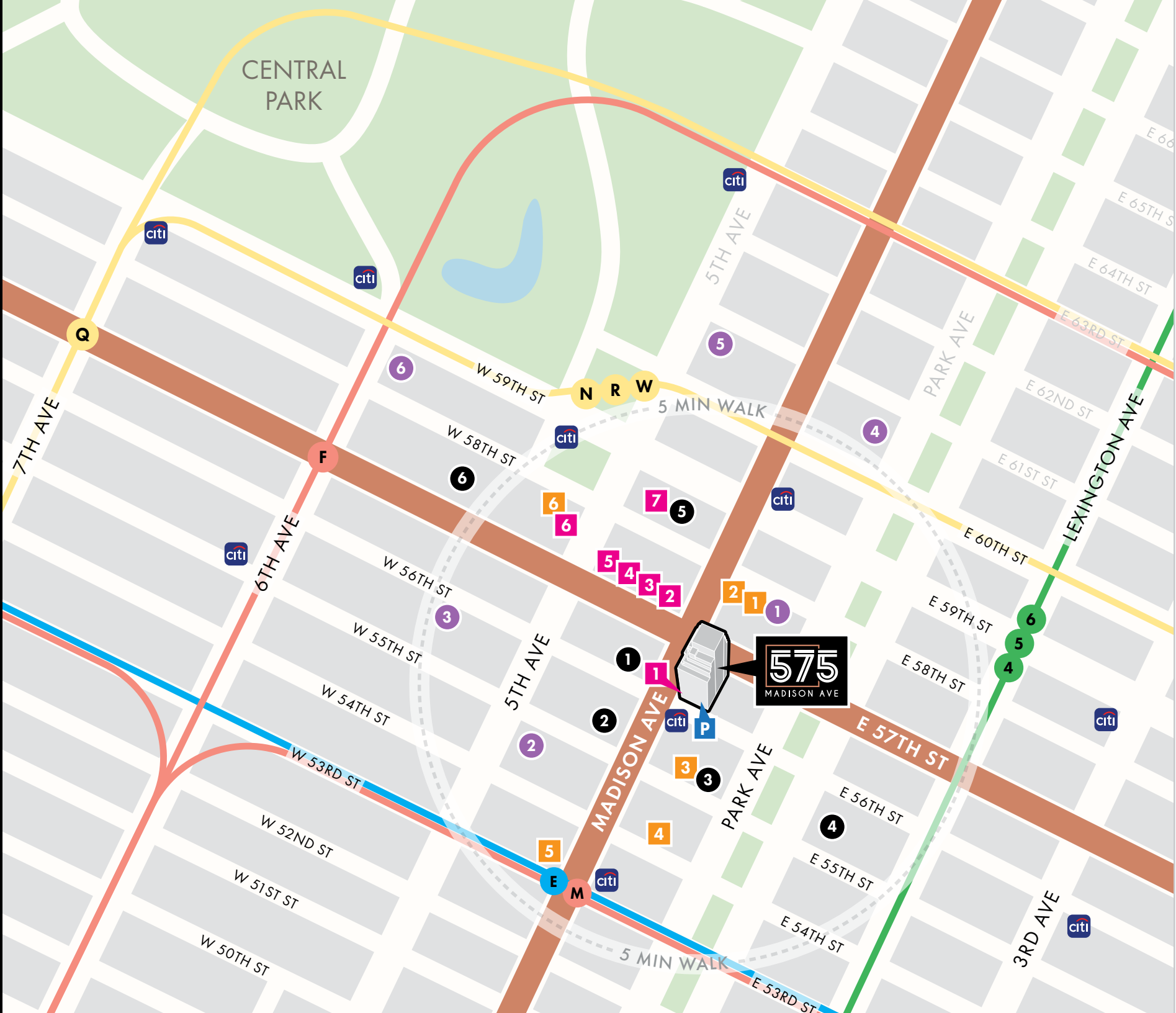
Office : Workstation	70%	30%
RSF/person	394	RSF/P

COLLABORATION

SPACE TYPE	SEATS	PLAN	
		SPACE	SEATS
Conference	16	1	16
	14	1	14
	8	1	8
	6	1	6
	4	2	8
Café	16	1	16
	10	1	10
Total		8	78

Collaborative Seats/Person: 1.24/Person





YOU'RE IN THE
**RIGHT
PART OF
TOWN**

- OFFICES**

 - 590 Madison Ave
 - 550 Madison Ave
 - Park Avenue Tower
 - 425 Park Ave
 - 767 Fifth Ave
 - 9 West 57th St
- HOTELS**

 - Four Seasons
 - St. Regis
 - Whitby
 - Loews Regency
 - Pierre
 - Ritz-Carlton
- RETAIL**

 - 575 RETAIL**
Breitling
First Republic Bank
ReBag
Oliver Peoples
Vacheron Constantin
 - Dior
 - Chanel
 - Burberry
 - Louis Vuitton
 - Bergdorf Goodman
 - Apple
- RESTAURANTS**

 - Tao Uptown
 - Serafina Osteria
 - Aquavit
 - Nerai
 - Empellon
 - BG
- P 100+ VALET PARKING GARAGE WITH DIRECT BUILDING ACCESS**
- CITIBIKE LOCATIONS**
- TRANSIT LINES**

A NEIGHBORHOOD THAT SPEAKS FOR ITSELF



BUILDING SPECIFICATIONS

- Building standard hours of operation are 24/7.
- There is 1 freight elevator and 8 passenger elevators (2 banks of elevators, 1 elevator bank for low rise and 1 for high rise, 4 elevators each).
- Slab heights: The 1st floor height from floor to slab is 13 or 14 feet. The slab heights are 10 feet floor to slab from the 2nd floor up to the 25th floor. The 26th and 27th floors are 13 feet floor to slab.
- Telephone and telecommunications structure: Verizon, Sprint and Time Warner are available at the building. The building is cable ready. Every floor has electrical closets and connections.
- Building terraces: Floors 11, 14, 17, 21, 24 and 26
- Valet garage parking with direct lobby access.
- New HVAC and electrical systems throughout the building.
- Bipolar ionization units installed Summer 2020.

