

787
7TH
AVE

CBRE



CENTRAL PARK VIEW

E48th Floor — 26,763 RSF

14'6" CEILING HEIGHTS

Sublease Term:

Through March 2027, or
Long Term Direct Deal

Possession:

Immediate



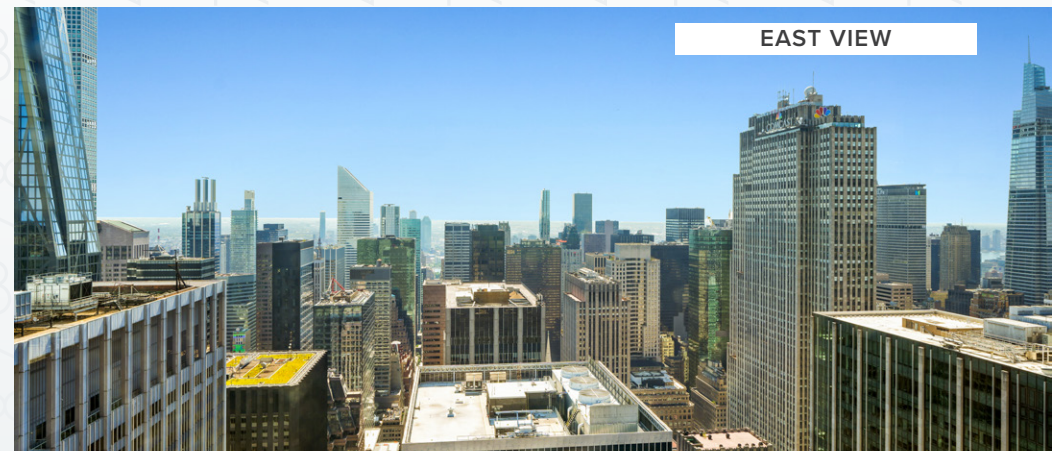
NORTHWEST VIEW



NORTHEAST VIEW



SOUTHWEST VIEW



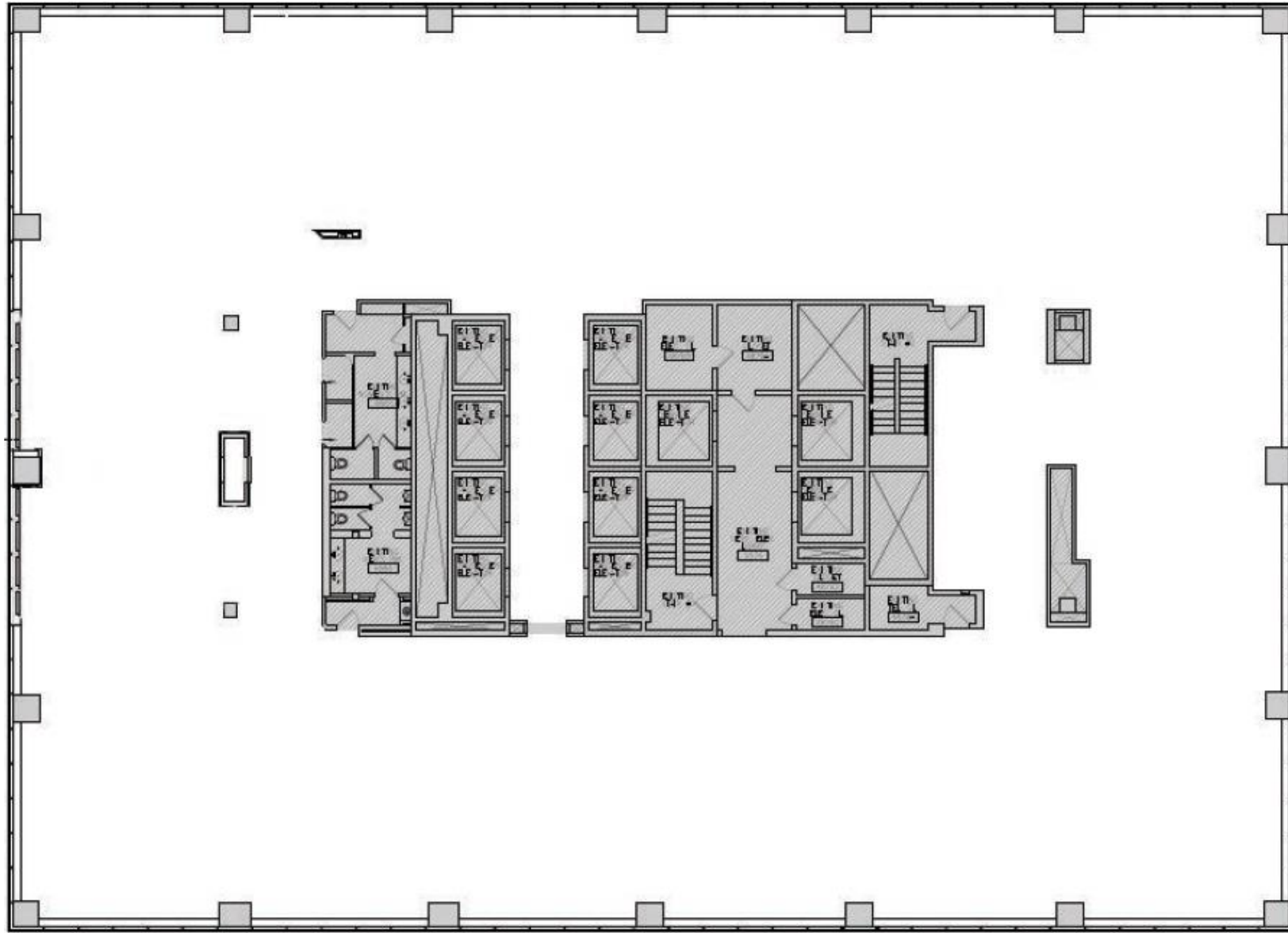
EAST VIEW

- Short term, plug & play opportunity on the 48th floor
- 25,000 – 50,000 sq. ft. direct deal possible
- Incredible natural light and sweeping views in all directions — Central Park, Hudson Yards, Midtown East

Raw Floorplan— 26,763 RSF

WEST 52ND STREET

7TH AVENUE



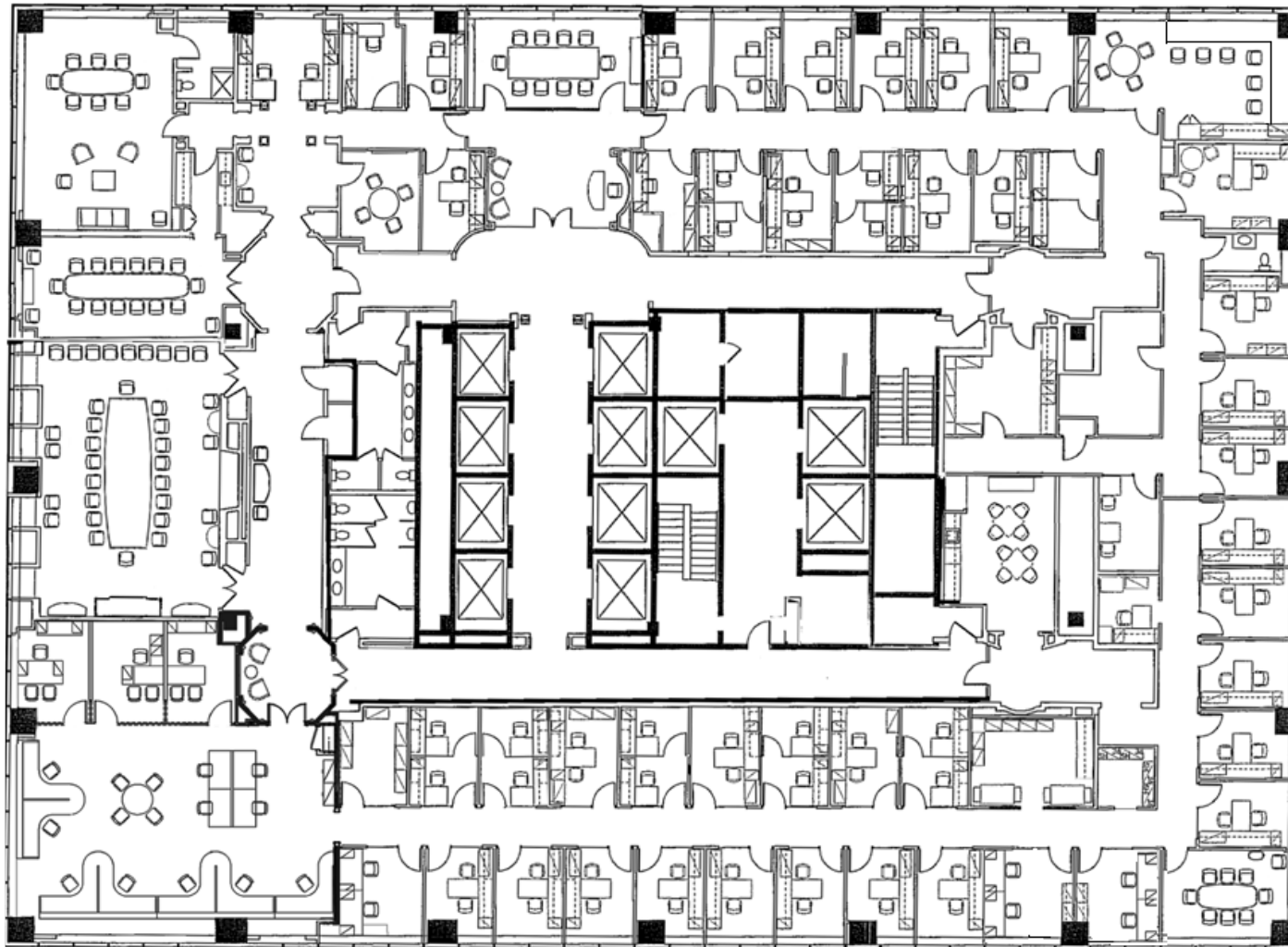
WEST 51ST STREET



As-Built— 26,763 RSF

WEST 52ND STREET

7TH AVENUE

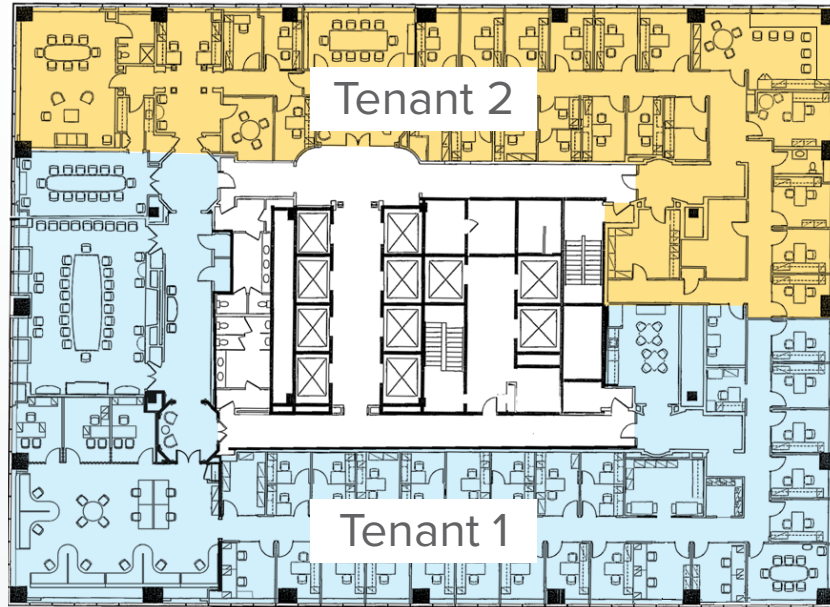


WEST 51ST STREET

WORKSTATIONS	11
LG SHARED OFFICES	4
DOUBLE OFFICES	16
SINGLE OFFICES	30
TOTAL HEADCOUNT	93
CONFERENCE (2-6P)	3
CONFERENCE (7-10P)	3
CONFERENCE (18P)	2



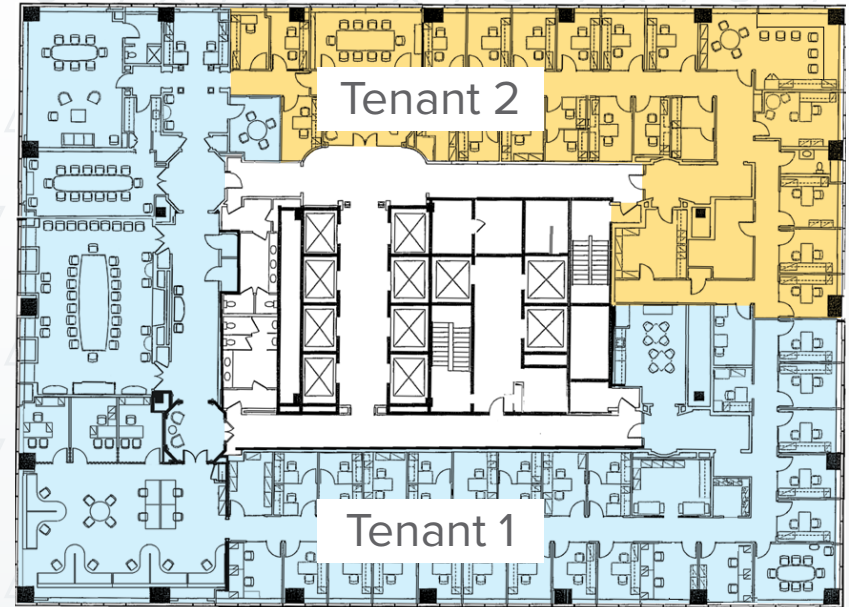
Potential Demising Plans



Option 1

Tenant 1 area is approximately ~14K

Tenant 2 area is approximately ~11K



Option 2

Tenant 1 area is approximately ~18K

Tenant 2 area is approximately ~8K