

299  
PARK AVE

Entire 21<sup>st</sup> Floor – Brand New Sublease Opportunity





**Floor / Area:** Entire 21<sup>st</sup> Floor - 29,173 RSF

**Sublease Term:** April 2029

**Possession:** Immediate

**Asking Rent:** Upon Request

## BUILDING FEATURES

Newly Renovated Lobby featuring a 60-foot LED interactive display

---

Upgraded Entrance & Plaza

---

Close Proximity to Grand Central

## SPACE OVERVIEW

Recently built installation

---

Plug and Play space, delivered fully furnished & wired

---

Excellent light and views

---

Only full floor available in the building

## LAYOUT FEATURES

62 Trading Desks

---

67 Workstations

---

5 Conference Rooms (1 for 16 people, 2 for 10 people, 2 for 6 people)

---

43 Windowed Offices; 4 Interior Offices

---

Pantry; 3 Coffee Bars

---

Reception Area

ENTIRE 21<sup>ST</sup> FLOOR | AS-BUILT PLAN

29,173 RSF

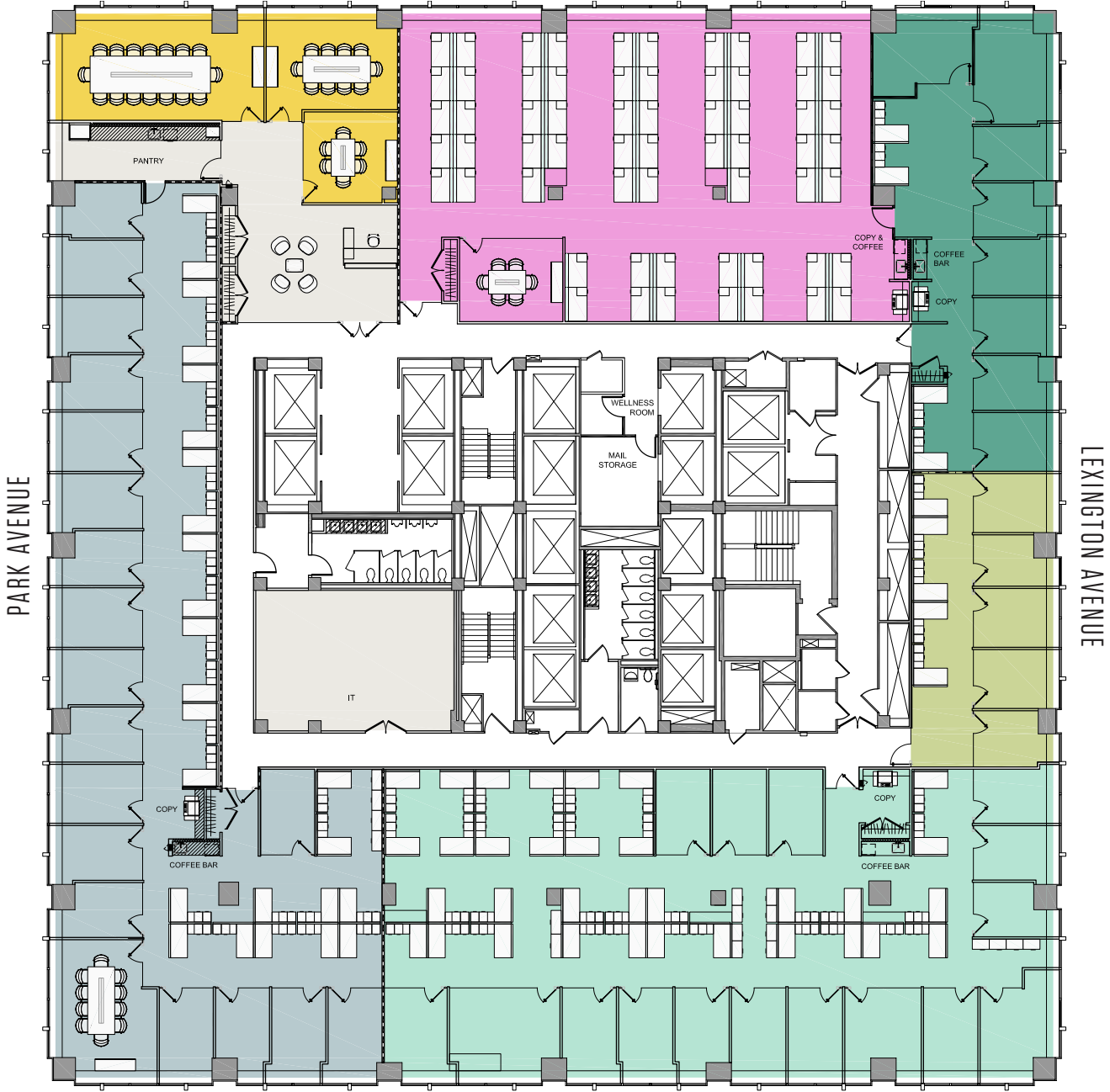


PHOTO GALLERY



PHOTO GALLERY



PHOTO GALLERY

