

20

WEST 38TH STREET MIDTOWN, NYC

Between Fifth & Sixth Avenues

RETAIL/OFFICE FOR LEASE

APPROXIMATE SIZE

2nd Floor: 3,000 SF

ASKING RENT

\$10,000/Month

POSSESSION

Immediate

TERM

5-10 Years

COMMENTS

- Fully built-out dental/medical office
- Located next to strong co-tenancy with great visibility
- High foot traffic area
- Existing bathroom in place
- Ideal for beauty, wellness, studio, etc.

NEIGHBORS

Bryant Park • Le Pain Quotidien • Koi Restaurant
• La Pecora Bianca • Core Power Yoga • The
Roby Theatre • Silver Mirror Facial Bar • Hyatt
• Archer Hotel • Callo Dao • Parker & Quinn
• Park Terrace Hotel • Marriot Bonvoy

TRANSPORTATION

1 2 3 N Q R W 7

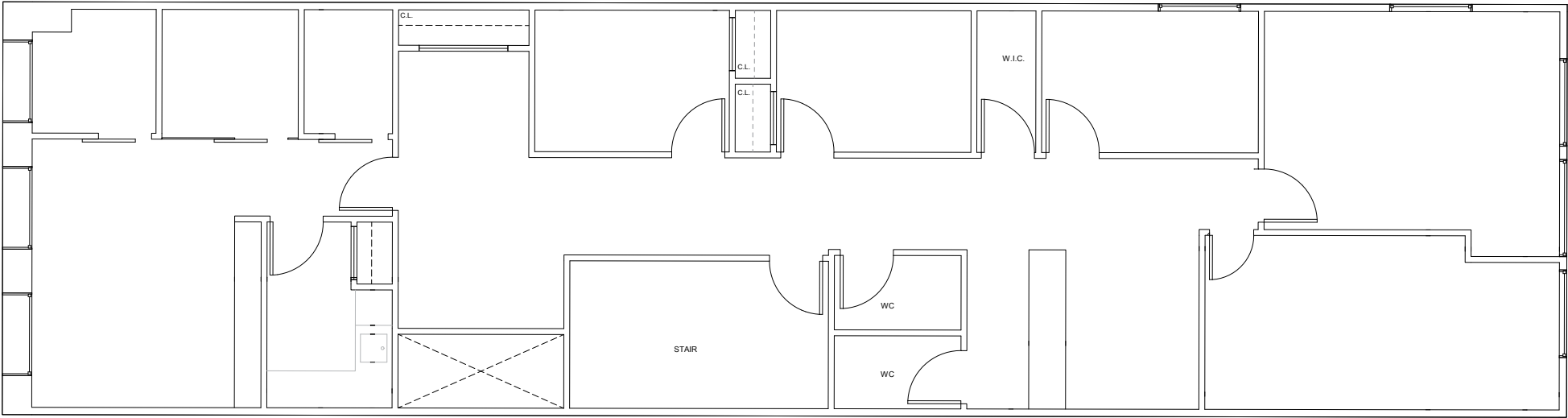


20 WEST 38TH STREET
MIDTOWN, NYC | Between Fifth and Sixth Avenues

RETAIL/OFFICE FOR LEASE



INTERIOR



MIDTOWN, NYC | Between Fifth and Sixth Avenues

NEIGHBORS