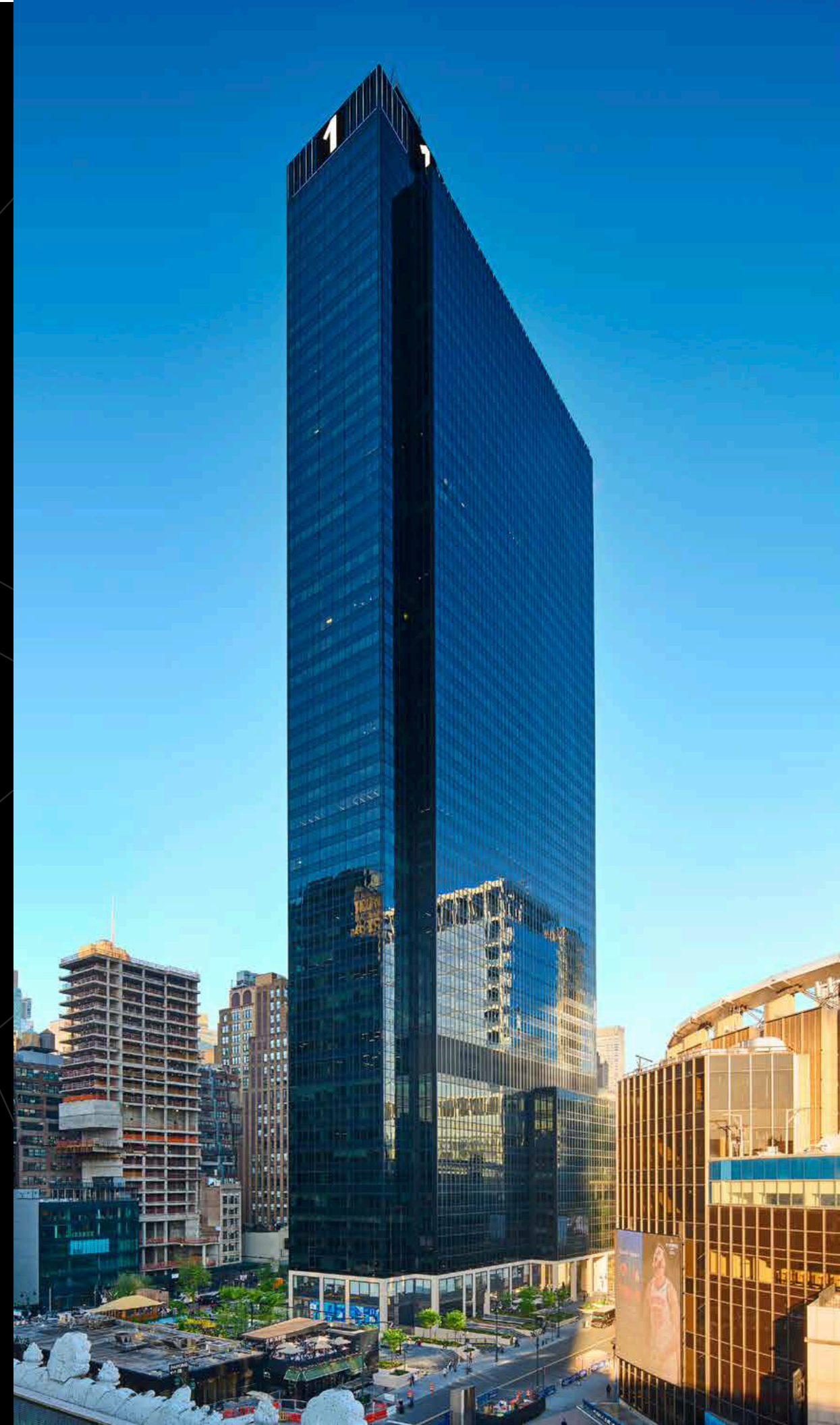


PENN 1

PARTIAL 39th FLOOR

3,041 RSF



PARTIAL 39th FLOOR

3,041 RSF

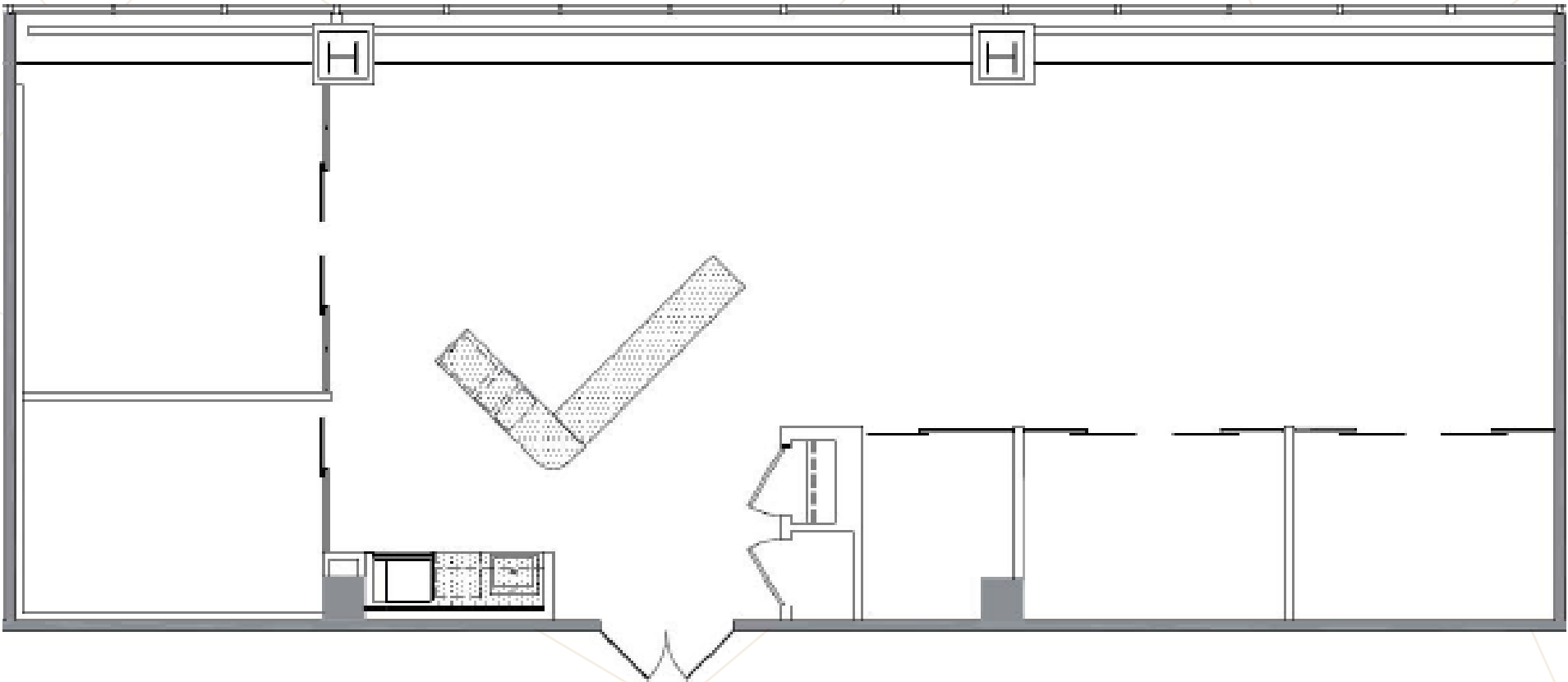
POSSESSION: Arranged

TERM: October 2026

COMMENTS:

- The space boasts glass-fronted office/meeting rooms, polished concrete floors and exposed ceilings, creating a sleek and contemporary atmosphere.
- Perfect for fostering office productivity and collaboration.
- Beautifully furnished office space with breathtaking unobstructed north-facing views.
- Conveniently located with direct elevator access.

34th STREET



- 3 OFFICES
- 1 CONFERENCE ROOM
- 1 MEETING ROOM
- 18 WORKSTATIONS
- 2 PHONE BOOTHS
- 1 OPEN WET PANTRY WITH STADIUM SEATING







PENN 1