

SUBLEASE AT ONE GRAND CENTRAL



FURNISHED PLUG & PLAY IN MIDTOWN EAST

PREMISE: 60 EAST 42ND

SPACE: PARTIAL 17TH

SIZE: 3,136 SF

TERM: THRU SEPT 2029

RENT: INQUIRE

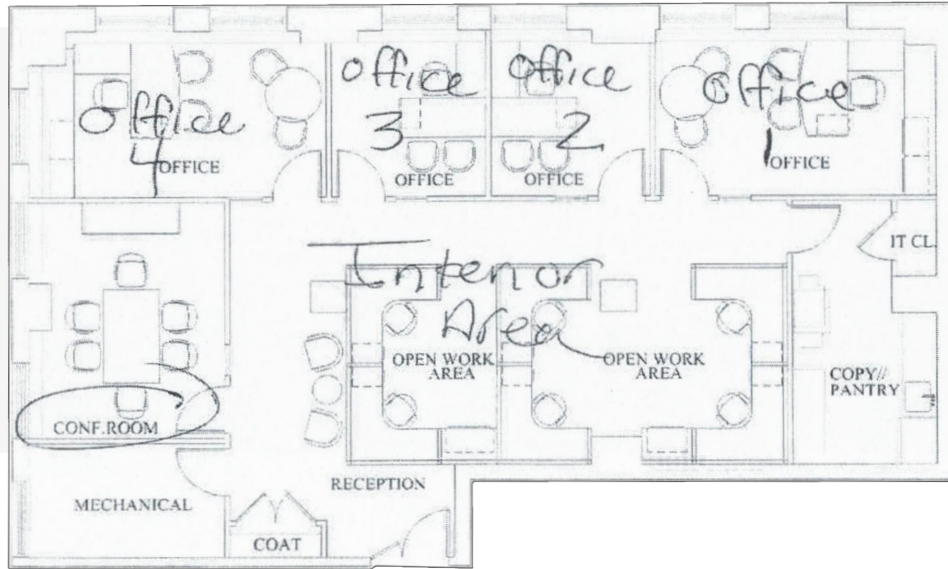
SPACE FEATURES

- OVERLOOKING GRAND CENTRAL & 42ND STREET
- 4 PRIVATE OFFICES
- 1 GLASS FRONTED CONFERENCE ROOM
- OPEN AREA W/ 4 LARGE WORKSTATIONS
- WET PANTRY
- FURNITURE CAN BE INCLUDED





FLOOR PLAN



PARTIAL 17TH

- 3,136 SF
- 4 PRIVATE OFFICES
- 1 GLASS FRONTED CONFERENCE ROOM
- OPEN WORK AREA
- PANTRY

