



CORNER OF
14TH STREET & FIFTH AVENUE
UNION SQUARE, NYC

80 FIFTH AVENUE

80 FIFTH AVENUE

CORNER OF 14TH STREET AND FIFTH AVENUE, UNION SQ

Floor / Suite	Size (Approx)	Notes
Suite 15-03	3,175 RSF	11 Private offices, Ability to demo into one space

HIGHLIGHTS:

- Landmark corner location at 14th Street and Fifth Avenue with exceptional visibility
- Flexible availabilities and lease terms ranging from boutique offices to full floors (~8,000SF),
- Ideal for startups, creative studios, or corporate headquarters.
- Situated in the creative heart of NYC, surrounded by Parsons/The New School, NYU, and a dense design, tech, and professional ecosystem in Union Square

TRANSPORTATION:

N Q R W 1 2 3 4 5 6

For more information please contact:



SUITE 15-03

SIZE (APPROX):

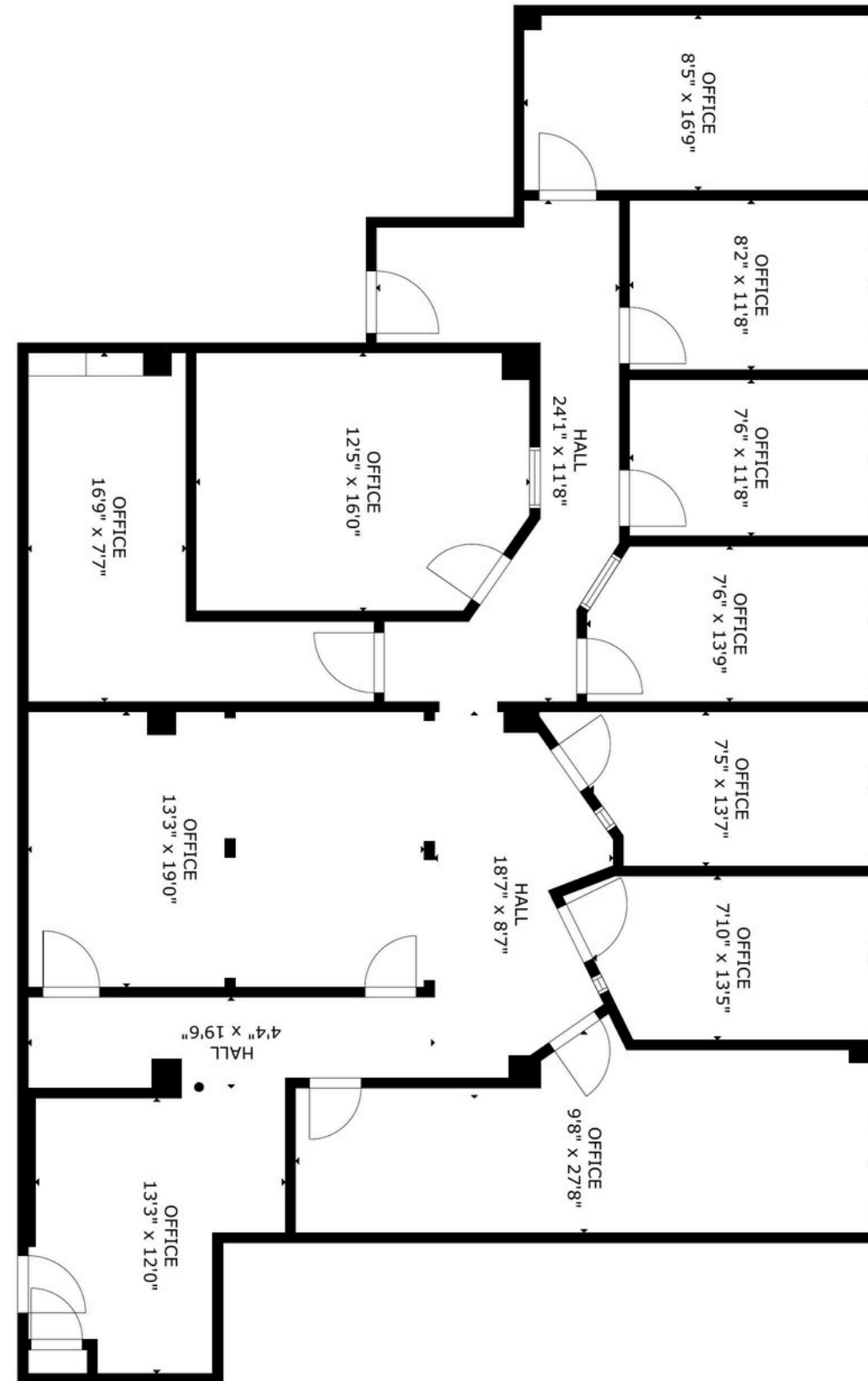
3,175 RSF

CEILING HEIGHT:

12'

HIGHLIGHTS:

- Move in Ready Suite
- 11 Private Offices
- Landlord Open to additional buildout
- Wooden floors
- Tons of Natural Light
- Landmark corner location at 14th Street and Fifth Avenue





80 FIFTH AVE- UNION SQUARE

