

# Property Summary

1133 Broadway, New York, NY 10010



## Location Overview

Located in the neighborhood NooMad of Manhattan between W 25th St & W 26th St near the 28th St subway station.

Nearest Transit: N & R trains at 28th St and the BM3, M55, BM4, & M3 bus lines.

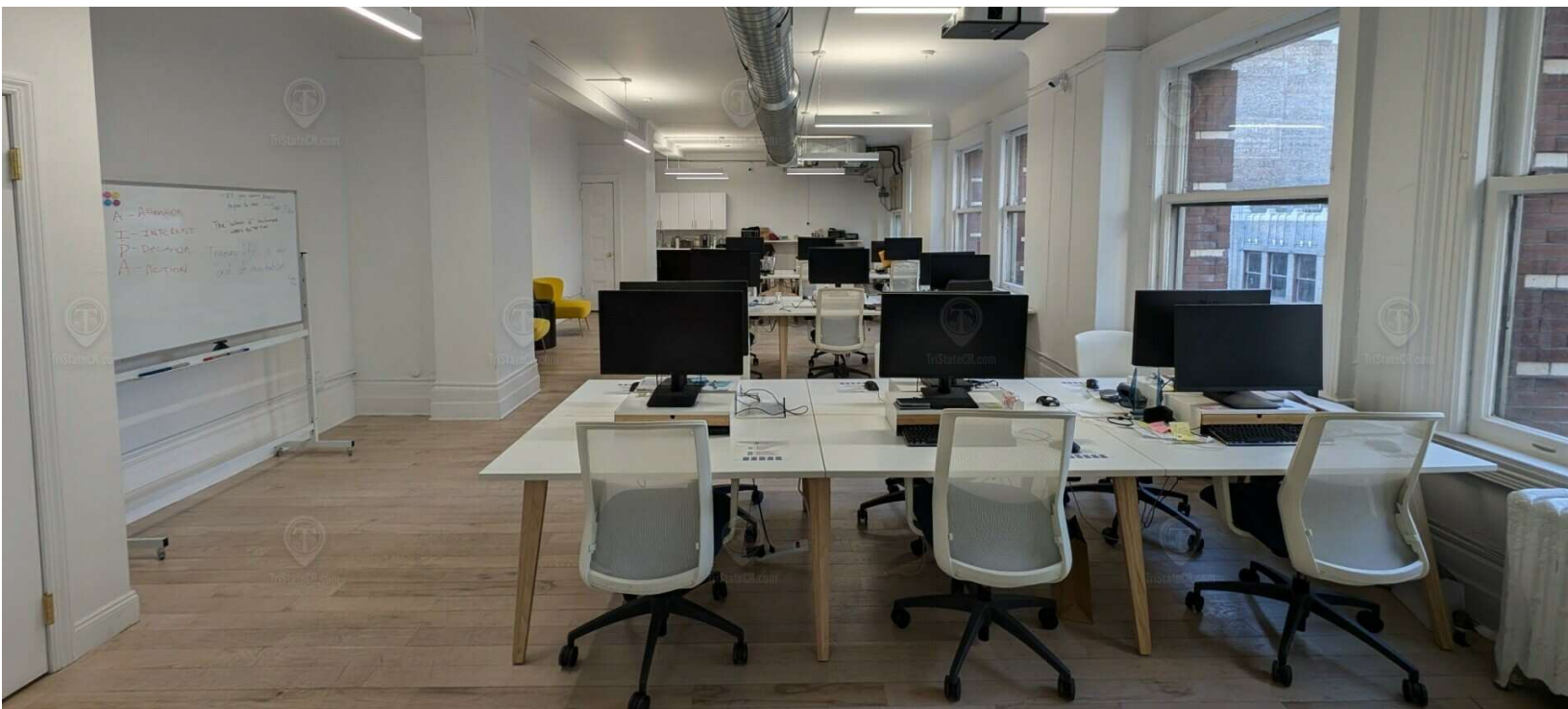
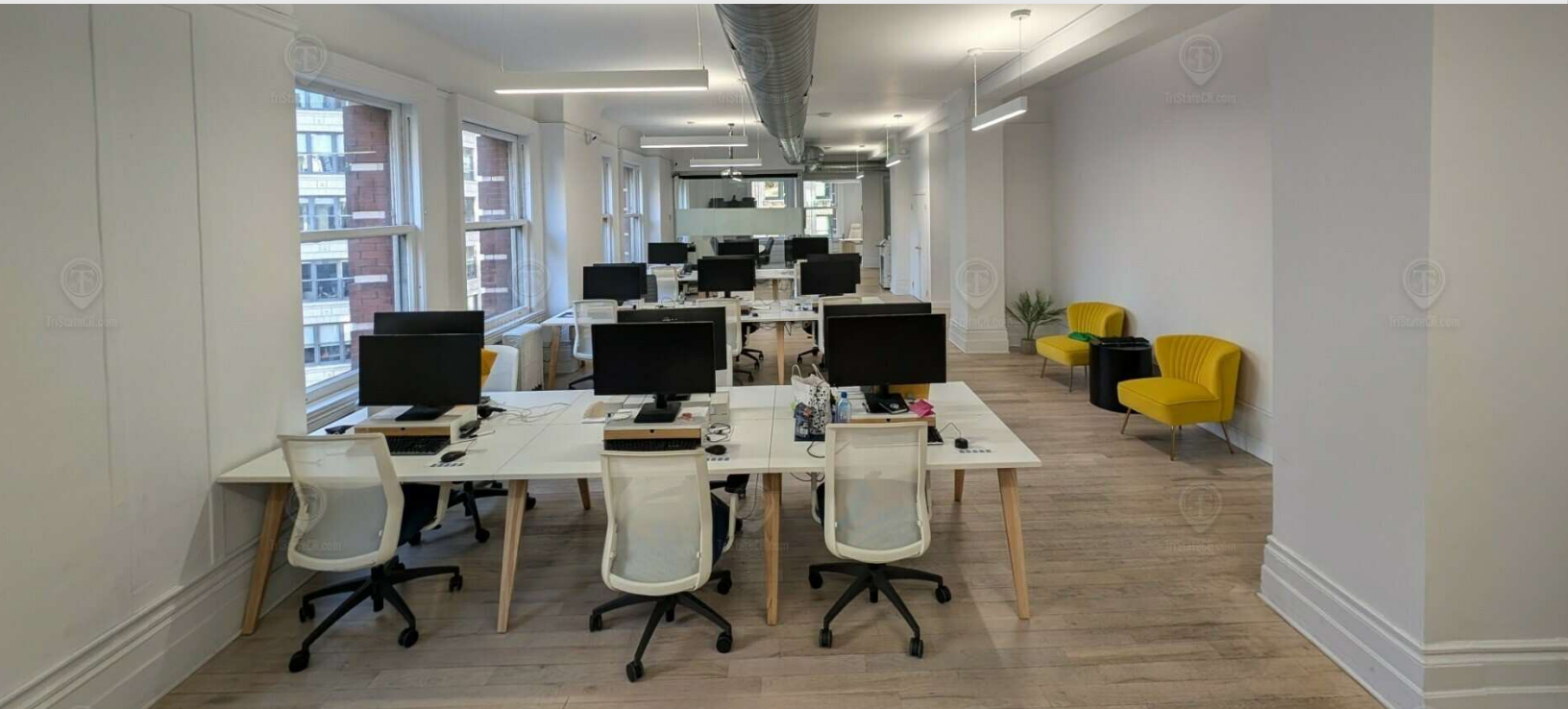
Nearby tenants include Tiffany & Co. Corporate Office, Chick-fil-A, CAVA, Auntie Anne's, Michaels, Trader Joe's, Best Buy, Burlington, CVS, PetSmart, The LEGO® Store, The Home Depot, COTE Korean Steakhouse, HOKA Store, Carrot Express, Arc'teryx Flatiron, New Balance Flatiron, Harry Potter New York, Kleinfeld Bridal, TD Bank, The Container Store, Lovesac, and more!

## Main Highlights

- ▶ 2 Private offices
- ▶ 18 workstations
- ▶ 1 Conference room
- ▶ 1 Kitchen & lounge area
- ▶ Open floor plan
- ▶ Mailroom
- ▶ Secure entry
- ▶ Lots of windows

# Additional Photos

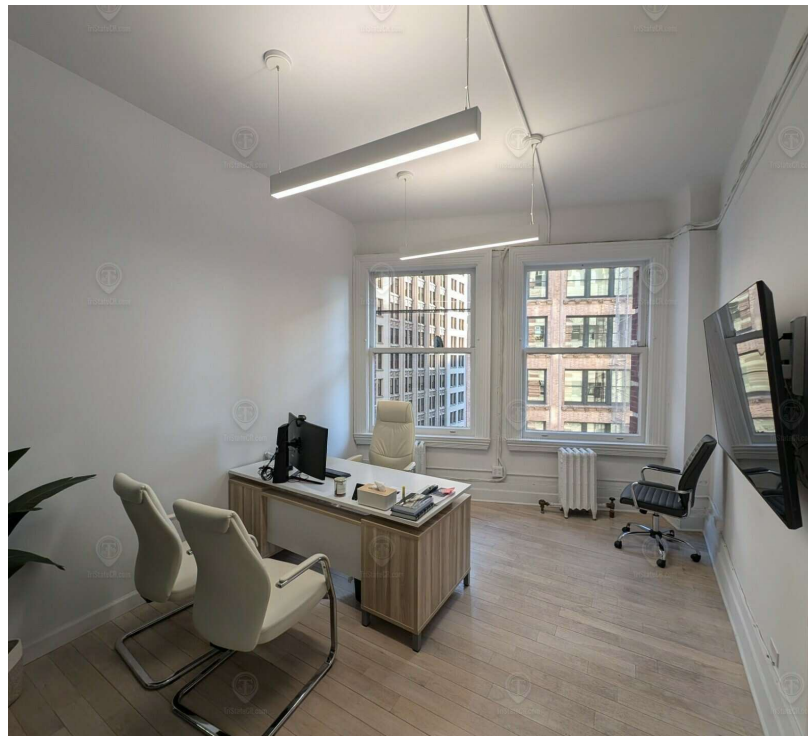
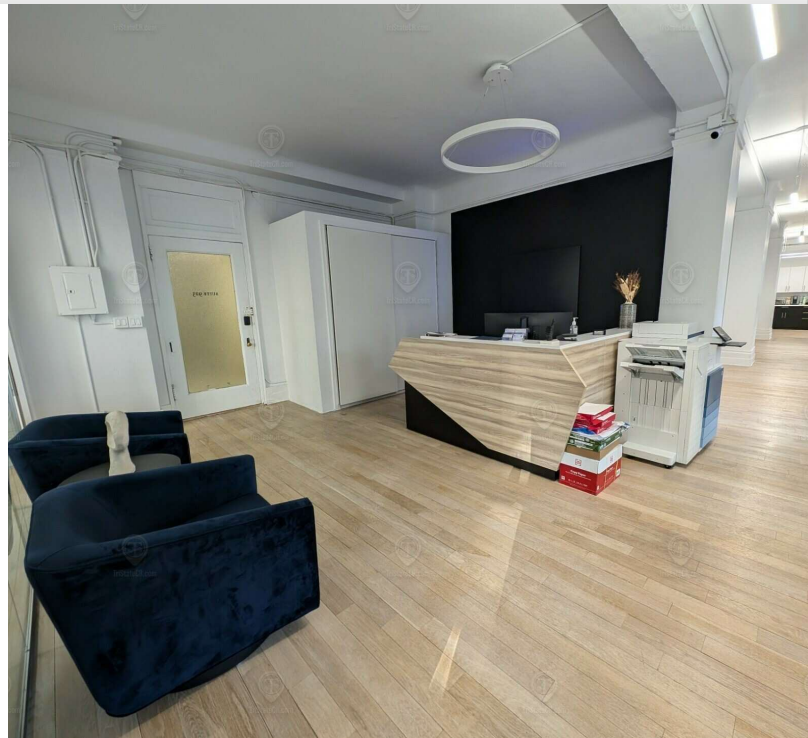
1133 Broadway, New York, NY 10010





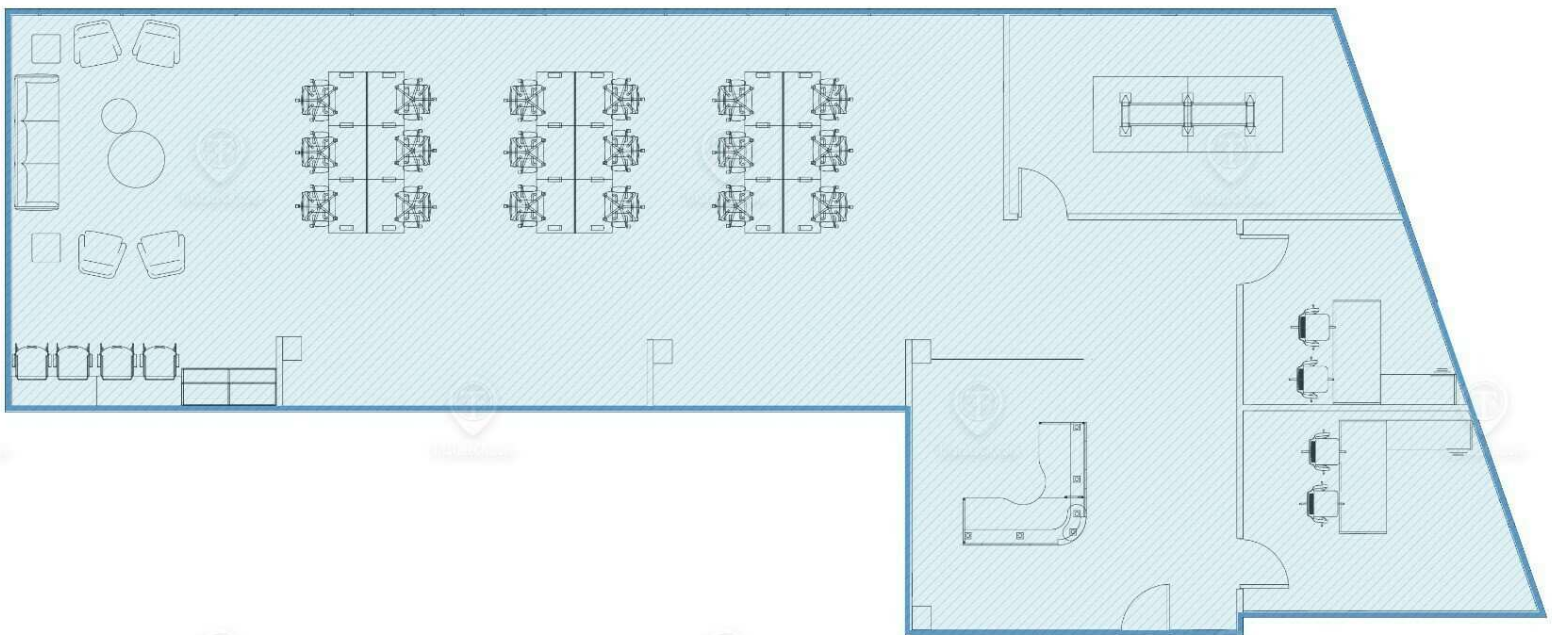
# Additional Photos

1133 Broadway, New York, NY 10010



# Floor Plans

1133 Broadway, New York, NY 10010



1133 BROADWAY  
TOTAL AVAILABLE SPACE: 3,200 SF

ALL SQUARE FOOTAGE  
ARE APPROXIMATE.