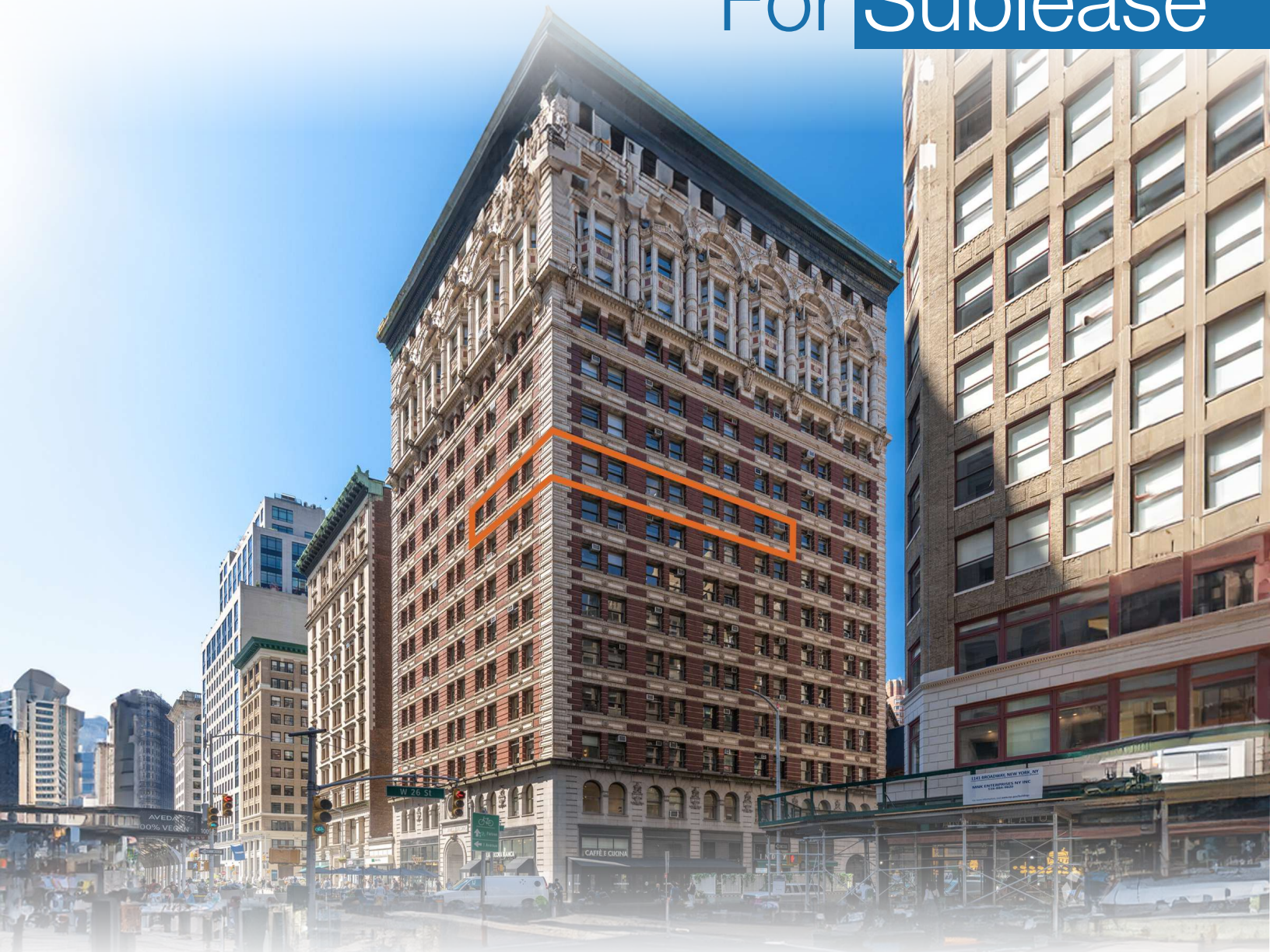


For Sublease



# Beautifully Built-Out Office For Sublease

3,200 SF

1133 Broadway • New York • NY

# Property Summary

1133 Broadway, New York, NY 10010



## Location Overview

Located in the neighborhood NooMad of Manhattan between W 25th St & W 26th St near the 28th St subway station.

Nearest Transit: N & R trains at 28th St and the BM3, M55, BM4, & M3 bus lines.

Nearby tenants include Tiffany & Co. Corporate Office, Chick-fil-A, CAVA, Auntie Anne's, Michaels, Trader Joe's, Best Buy, Burlington, CVS, PetSmart, The LEGO® Store, The Home Depot, COTE Korean Steakhouse, HOKA Store, Carrot Express, Arc'teryx Flatiron, New Balance Flatiron, Harry Potter New York, Kleinfeld Bridal, TD Bank, The Container Store, Lovesac, and more!

## Main Highlights

- ▶ 2 Private offices
- ▶ 18 workstations
- ▶ 1 Conference room
- ▶ 1 Kitchen & lounge area
- ▶ Open floor plan
- ▶ Mailroom
- ▶ Secure entry
- ▶ Lots of windows



**183,168 SF**

Total Building Size



**13,898 SF**

Lot Size



**C5-2**

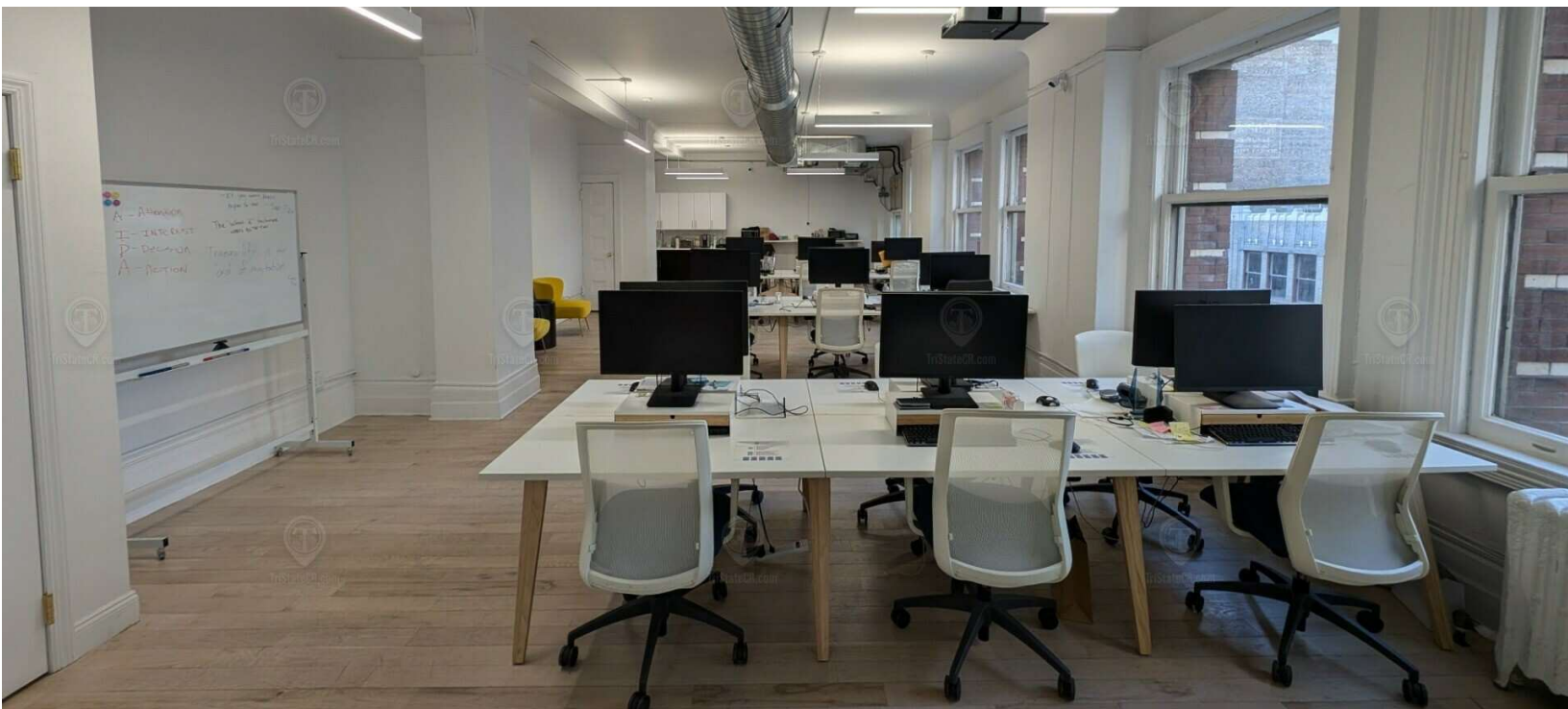
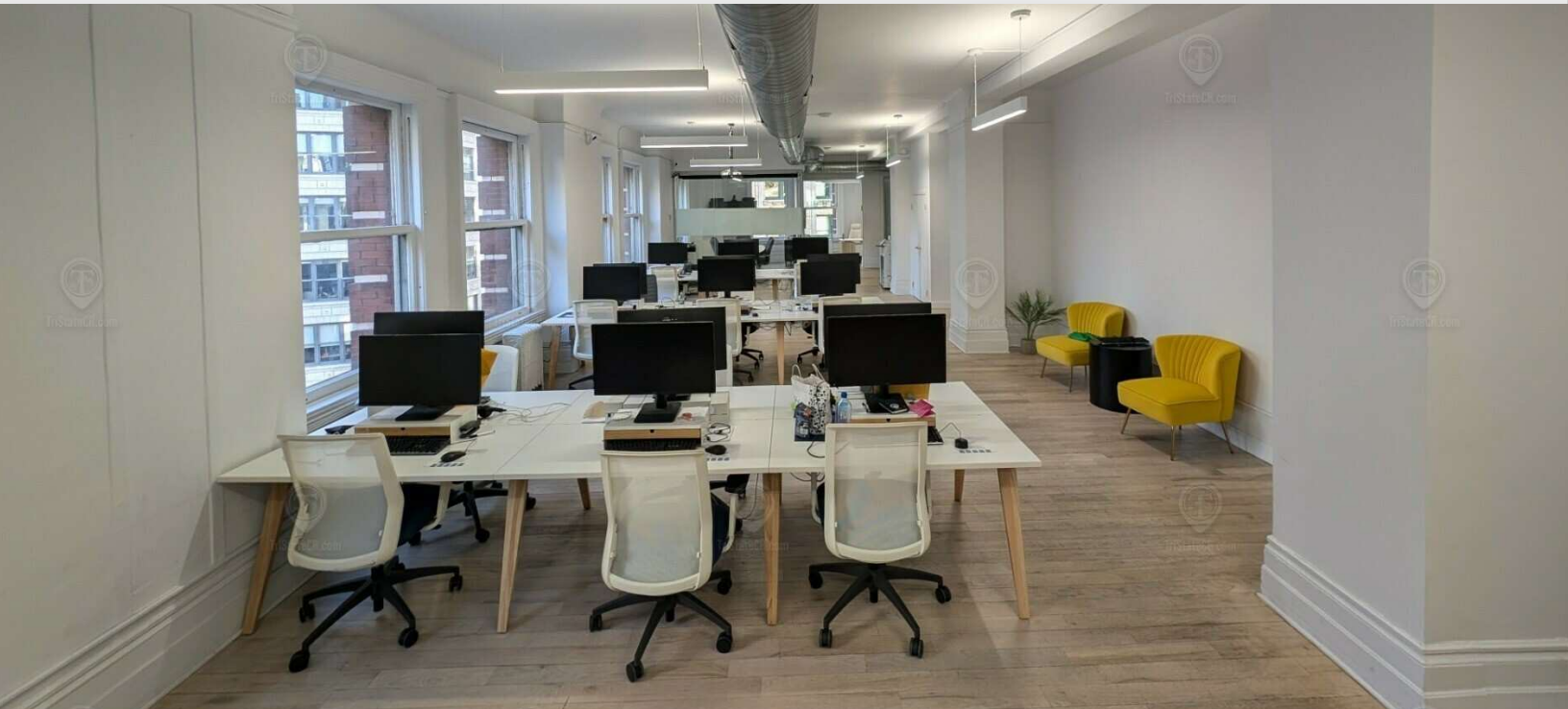
Zoning

**FOR SUBLEASE • 3,200 SF**



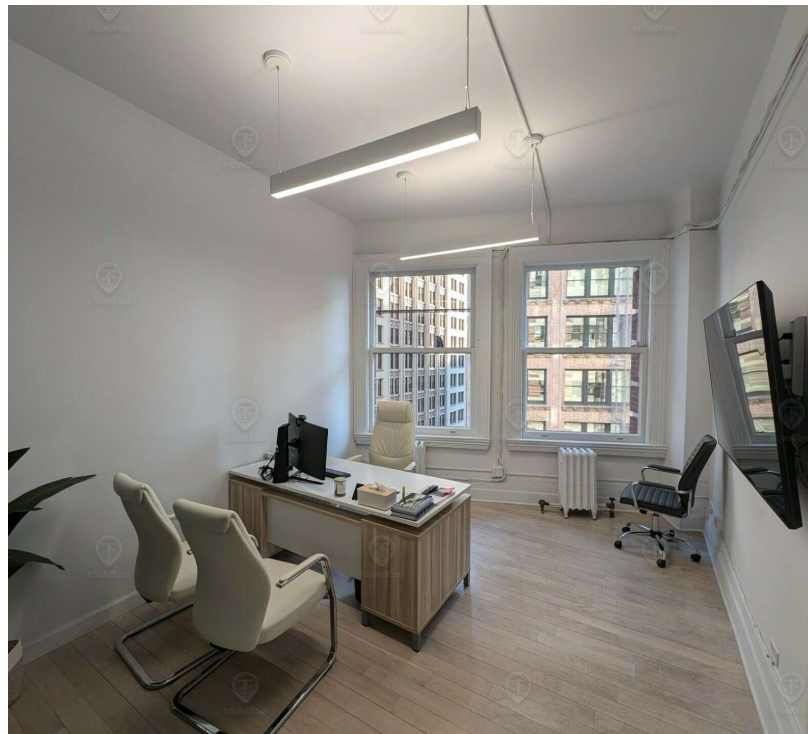
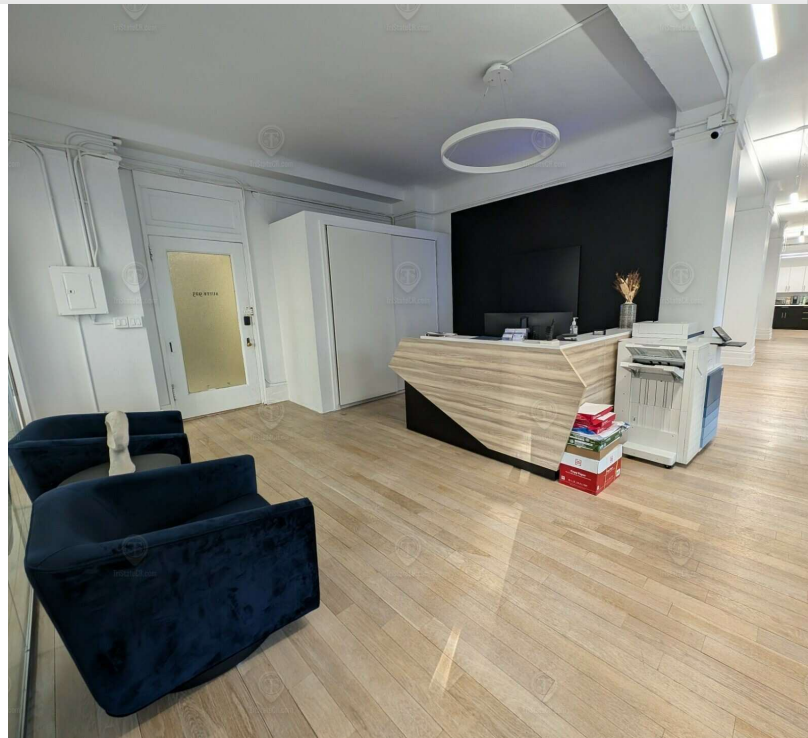
# Additional Photos

1133 Broadway, New York, NY 10010



# Additional Photos

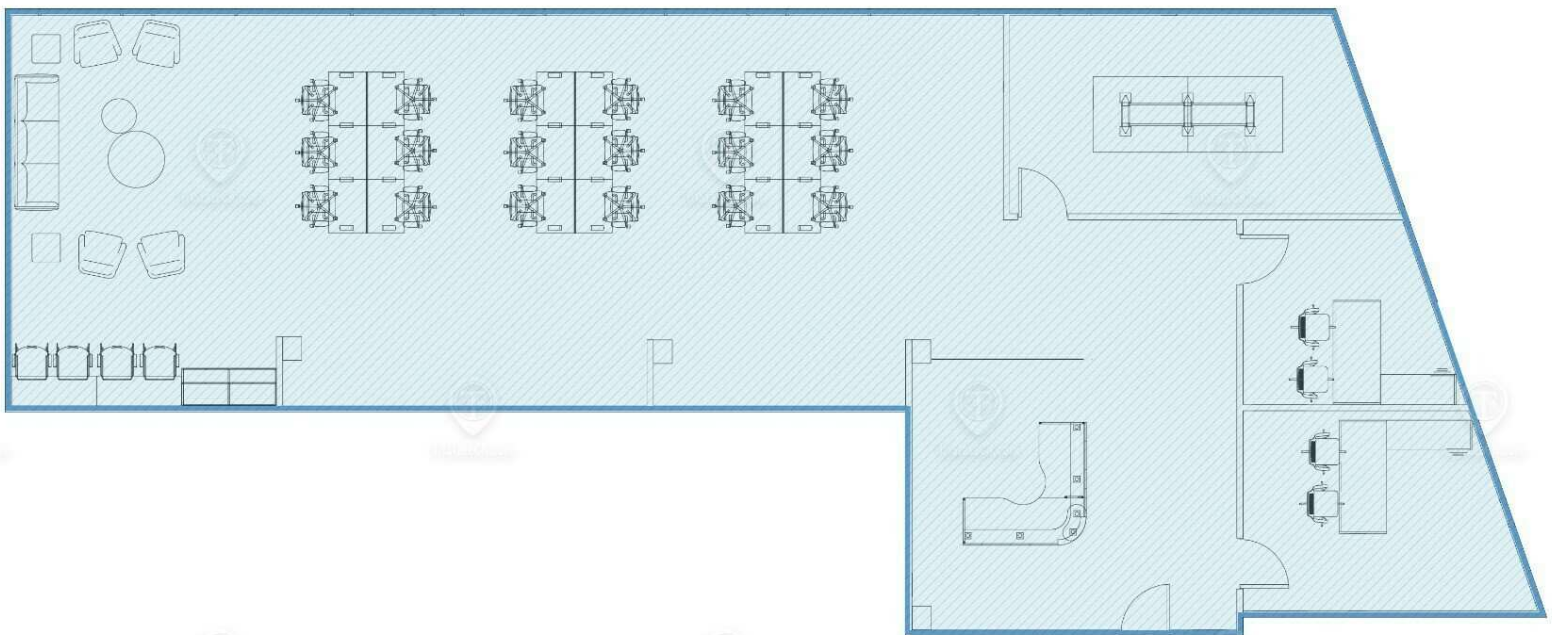
1133 Broadway, New York, NY 10010





# Floor Plans

1133 Broadway, New York, NY 10010

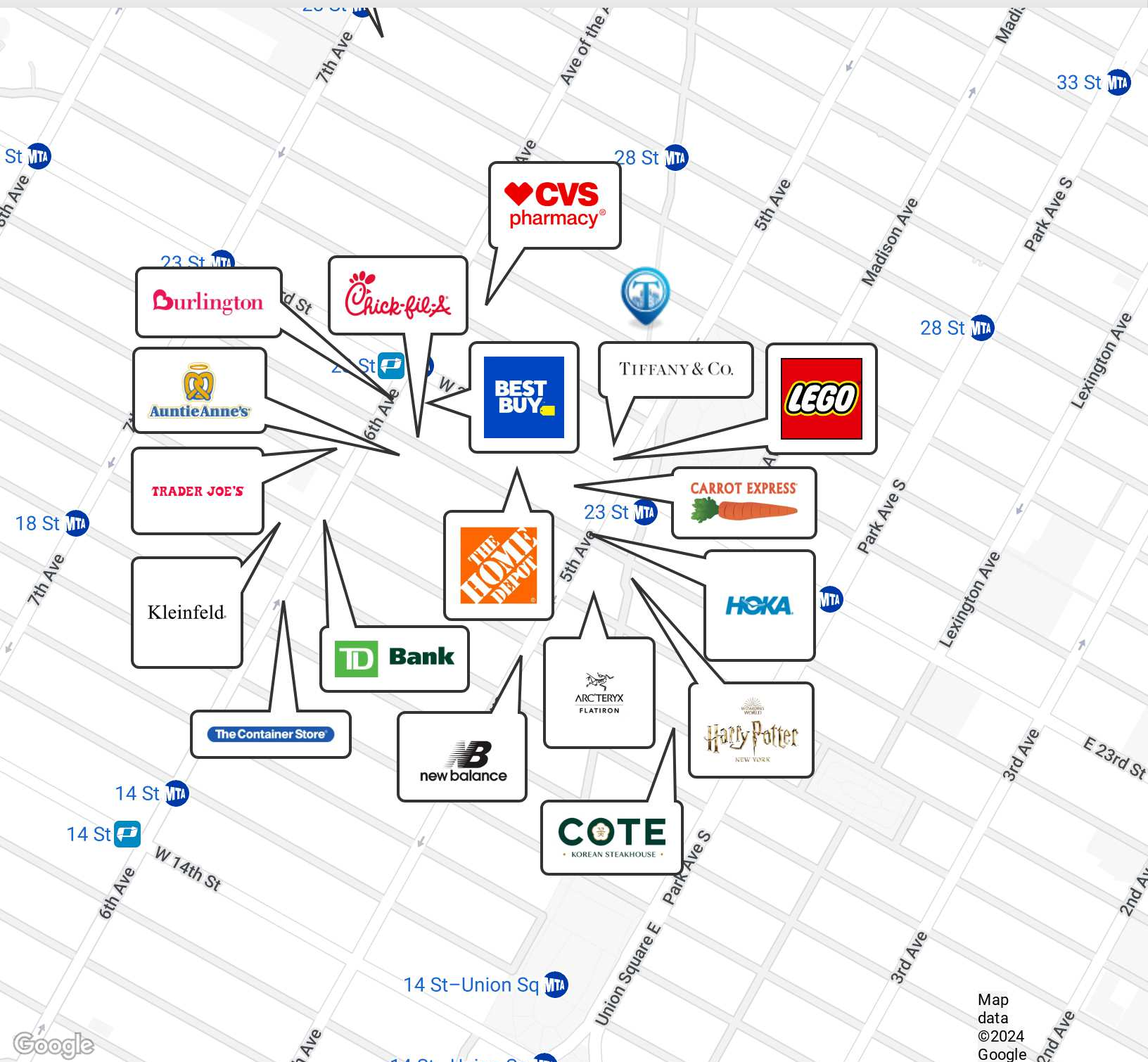


1133 BROADWAY  
TOTAL AVAILABLE SPACE: 3,200 SF

ALL SQUARE FOOTAGE  
ARE APPROXIMATE.

# Retailer Map

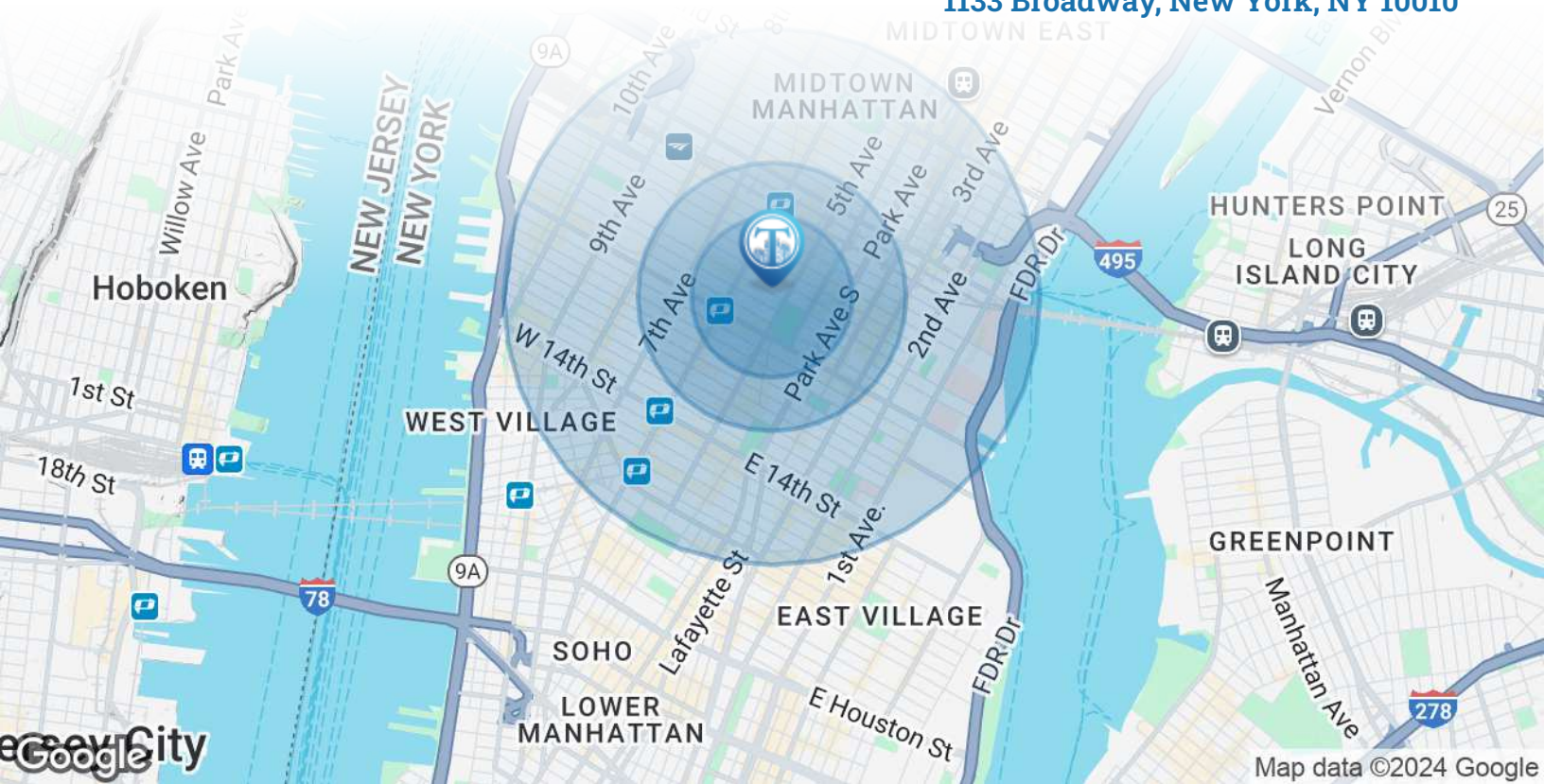
1133 Broadway, New York, NY 10010



Map  
data  
©2024  
Google

# Area Demographics

1133 Broadway, New York, NY 10010



POPULATION	0.3 MILES	0.5 MILES	1 MILE
Total Population	12,138	58,572	239,396
Average Age	38	39	40
Average Age (Male)	39	40	40
Average Age (Female)	38	38	40
HOUSEHOLDS & INCOME	0.3 MILES	0.5 MILES	1 MILE
Total Households	6,559	31,202	128,269
# of Persons per HH	1.9	1.9	1.9
Average HH Income	\$227,895	\$205,806	\$192,578
Average House Value	\$1,659,097	\$1,381,733	\$1,236,070



239,396

People within 1 Mile



\$192,578

Avg Household Income