

# 18 EAST 16<sup>TH</sup> STREET

## BUILT AT UNION SQUARE

AREA: Partial 3<sup>rd</sup> Floor: 3,257 RSF

POSSESSION: Immediate

TERMS: Negotiable

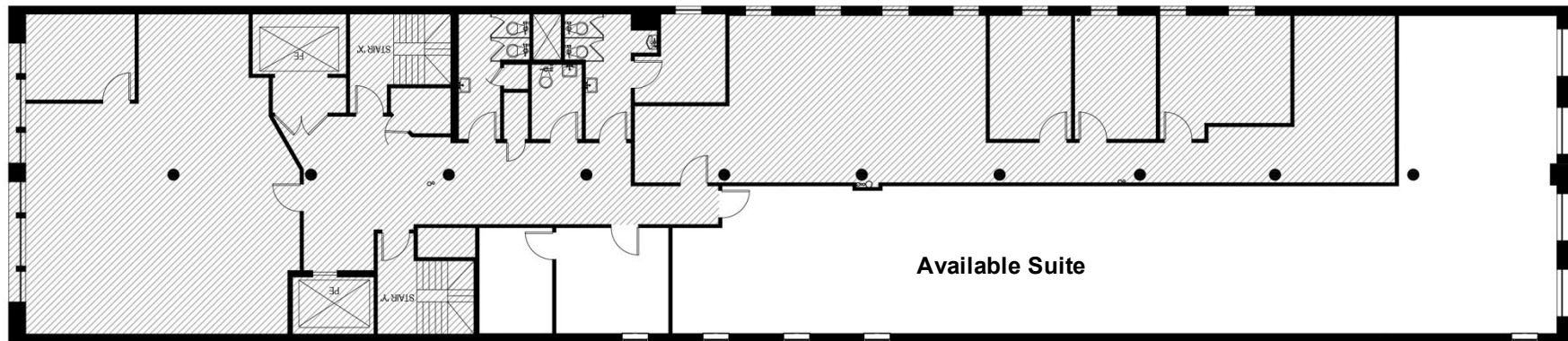
RENT: Upon Request

## PROPERTY HIGHLIGHTS

- Fantastic Location Next to Union Square
- Creative Lofts with Hardwood Flooring & Exposed Ceiling
- Hands-On Property Management
- On-Site Superintendent



**Partial 3<sup>rd</sup> Floor  
Core & Shell Plan  
3,257 RSF**



**18 EAST  
16<sup>TH</sup> STREET  
BUILT AT UNION SQUARE**

# 18 EAST 16<sup>TH</sup> STREET

BUILT AT UNION SQUARE

