

# 800 SEVENTH AVENUE NYC

Full Building Mixed-Use / Retail / Restaurant  
Space for Lease or Sale







ROSIE  
O'GRADY  
BAR

RESTAURANT  
BAR

ROSIE O'GRADY'S STEAK

ROSIE O'GRADY'S SALOON SEAFOOD

ROSIE O'GRADY'S

Rosie  
O'Grady's

810 DELI &





▲ INTERIOR IMAGES ▼



space DETAILS

NORTHWEST CORNER OF WEST 52ND STREET

Approximate Size

Ground Floor	5,720 SF
Second Floor	5,584 SF
Third Floor	5,584 SF
Fourth Floor	3,262 SF
Cellar	7,838 SF
Total	27,988 SF

Possession

Immediate

Term

Long term

Frontage

77 FT on Seventh Avenue  
76 FT on West 52nd Street

Site Status

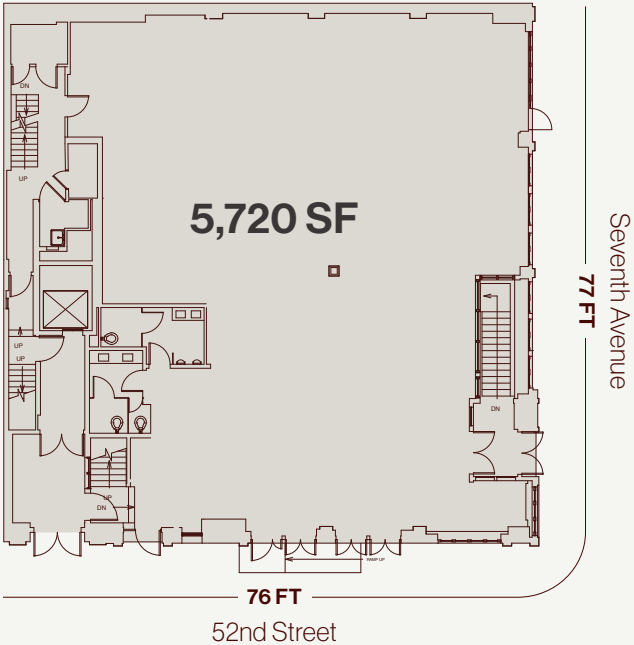
Formerly Rosie O'Grady's

Features

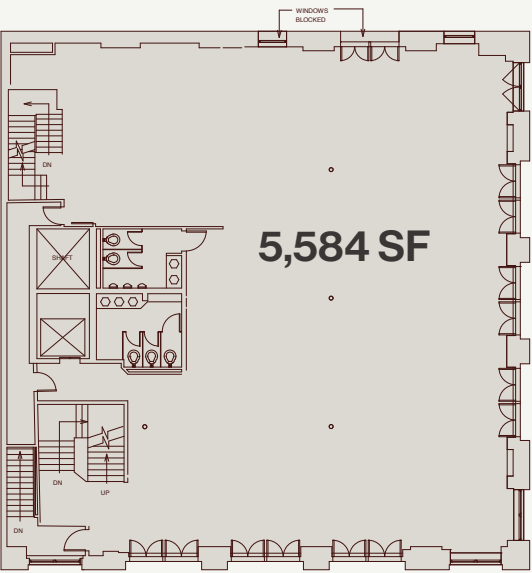
- Full building opportunity
- Second-generation restaurant
- Ideal for high-volume restaurant tenants
- Time Square and Columbus Circle adjacencies

# floor PLANS

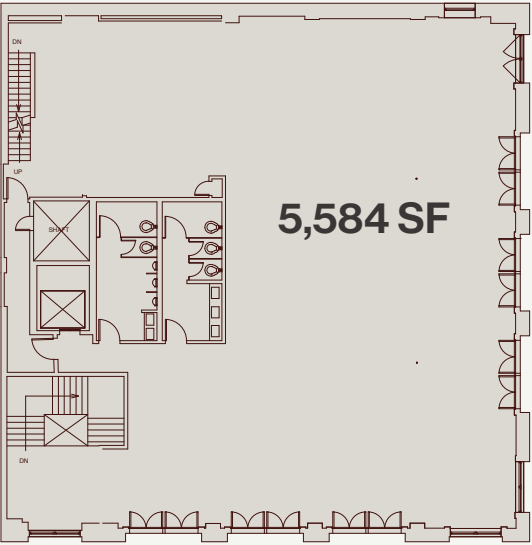
GROUND FLOOR



SECOND FLOOR



THIRD FLOOR



FOURTH FLOOR



CELLAR



# 800 SEVENTH AVENUE NYC



348K

Total Daytime Population

\$171K

Avg. Household Income

35.3K

Hotel Rooms

3.1M

Avg. Annual Ridership  
at the Seventh Avenue

B D E

\$169.4M

Annual consumer spending  
at restaurants

the NEIGHBORHOOD