



MOVE-IN READY BRIGHT CORNER OFFICE SPACE

3,275 RSF



915 BROADWAY

BETWEEN THE PARKS

Southwest Corner of 21st Street & Broadway





Furniture shown for layout concept only

Suite 1406: 3,275 rsf

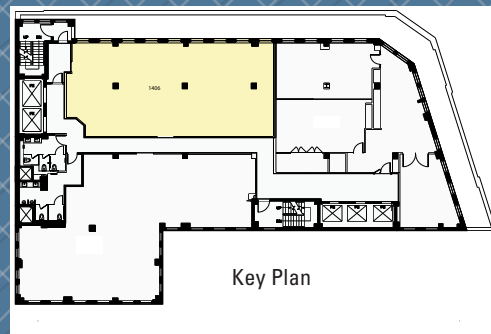
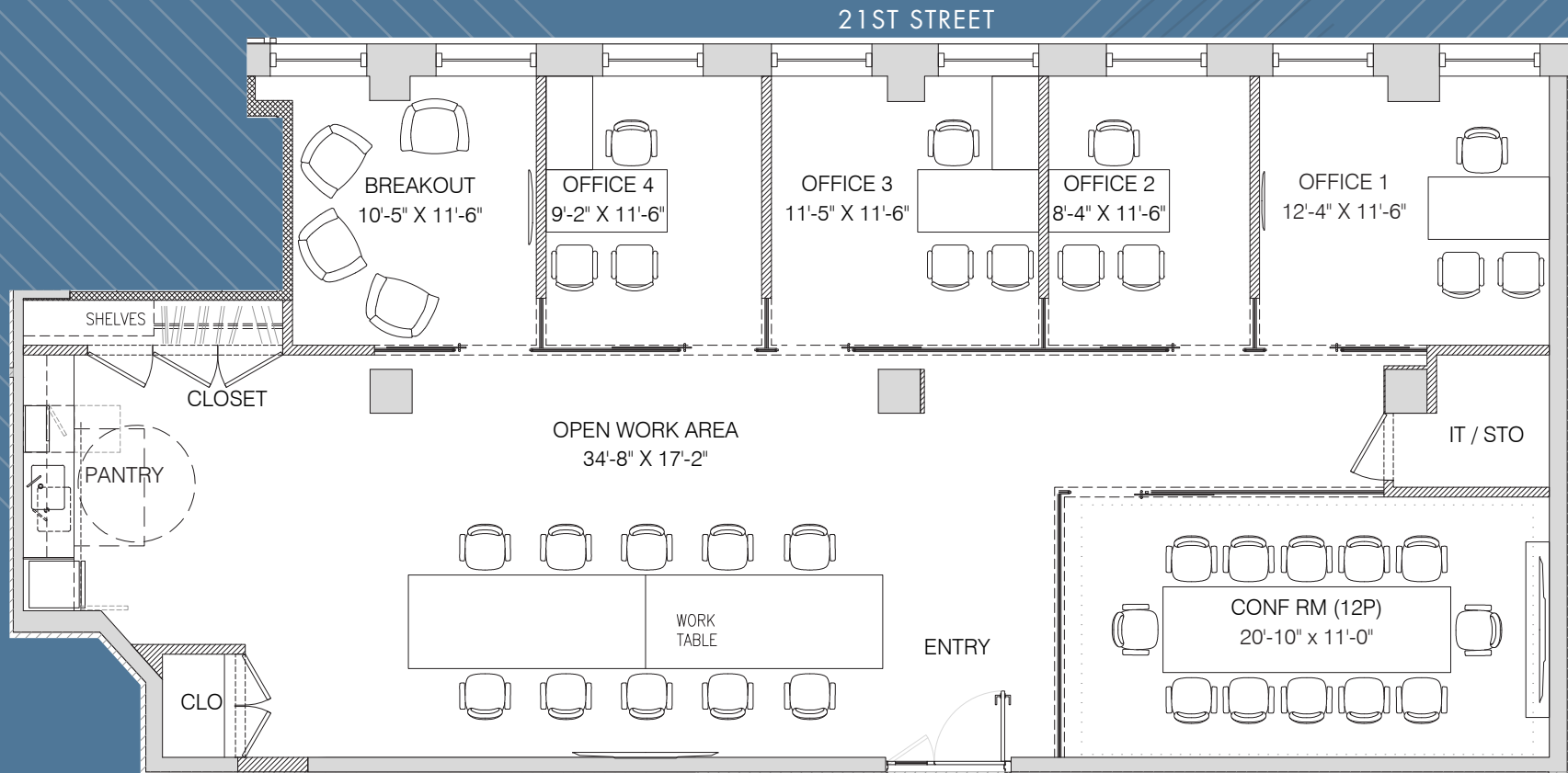
- Move-in ready built corner space with hardwood floors throughout and exposed ceiling
- (1) Conference room, (4) windowed offices and (1) breakout room/office, wet pantry and open area
- Windows provide good natural light and north exposure

Possession: January 1, 2026

Rent: Call or email for info

- High speed fiber on each floor connected to a redundant fiber loop below the building
- Direct access to the Union Square transportation hub  express and local subway lines; and close proximity to NJ  station at 23rd St/6th Ave
- Centrally located between Union Square and Madison Square Park, the area offering a wide variety of services, retail, and dining options

SUITE 1210 - 1,379 RSF
(AS-BUILT PLAN)



(Floor plan for descriptive purposes only; not to scale. Furniture shown for layout concept only)



Office



Conference room



Full Wet Pantry



Breakout Room/Office

(Furniture shown for layout concept only)



Walk, Bike, Drive or Ride to Work & Play

Dine: ABC Kitchen, Barn Joo, Eataly, Gramercy Tavern, Novita, Merakia, Union Square Cafe, Whole Foods

Shop: Athleta, Design Within Reach, Jacadi, Nike, Saatva, Arc'teryx, Nordstrom Rack, Untuckit

Enjoy: The Parks, Union Square Farmers Market, Festivals, Soulcycle, Equinox, Uplift Studios

Neighbors: BuzzFeed, Dropbox, Facebook, IBM Resources, Mastercard, NYU, Santander, The Flatiron Building, W Hotel



