



Welcome to

# CITYSPIRE

156 W 56th Street, New York City, NY





CITYSPIRE

---

# Make Your Mark in Manhattan

Our diverse roster of customers has taught us every company has unique needs. It's why our team offers a breadth of solutions for businesses just like yours, and why so many businesses operating in Manhattan love to call our buildings home.

CitySpire is no exception. Situated on the edge of Central Park, CitySpire is a 24-story boutique office building perfect for companies on the edge of innovation.




# Where Work Meets Life

CitySpire customers enjoy convenient access to the best of everything the city has to offer. Grab lunch in Central Park, stroll pass Columbus Circle and get anywhere in minutes with easy access to 16 different subway lines.

## Walking Distances

- 3 min** N Q R F B D M A C E 1 2
- 8 min** N Q R F B D M A C E 1 2 3 4 5 6

## Places Nearby

-  Citi Bike Locations
- |                          |                             |
|--------------------------|-----------------------------|
| <b>1</b> Central Park    | <b>4</b> Rockefeller Center |
| <b>2</b> Columbus Circle | <b>5</b> Carnegie Hall      |
| <b>3</b> Lincoln Center  | <b>6</b> The Plaza          |





# A Space to Flourish

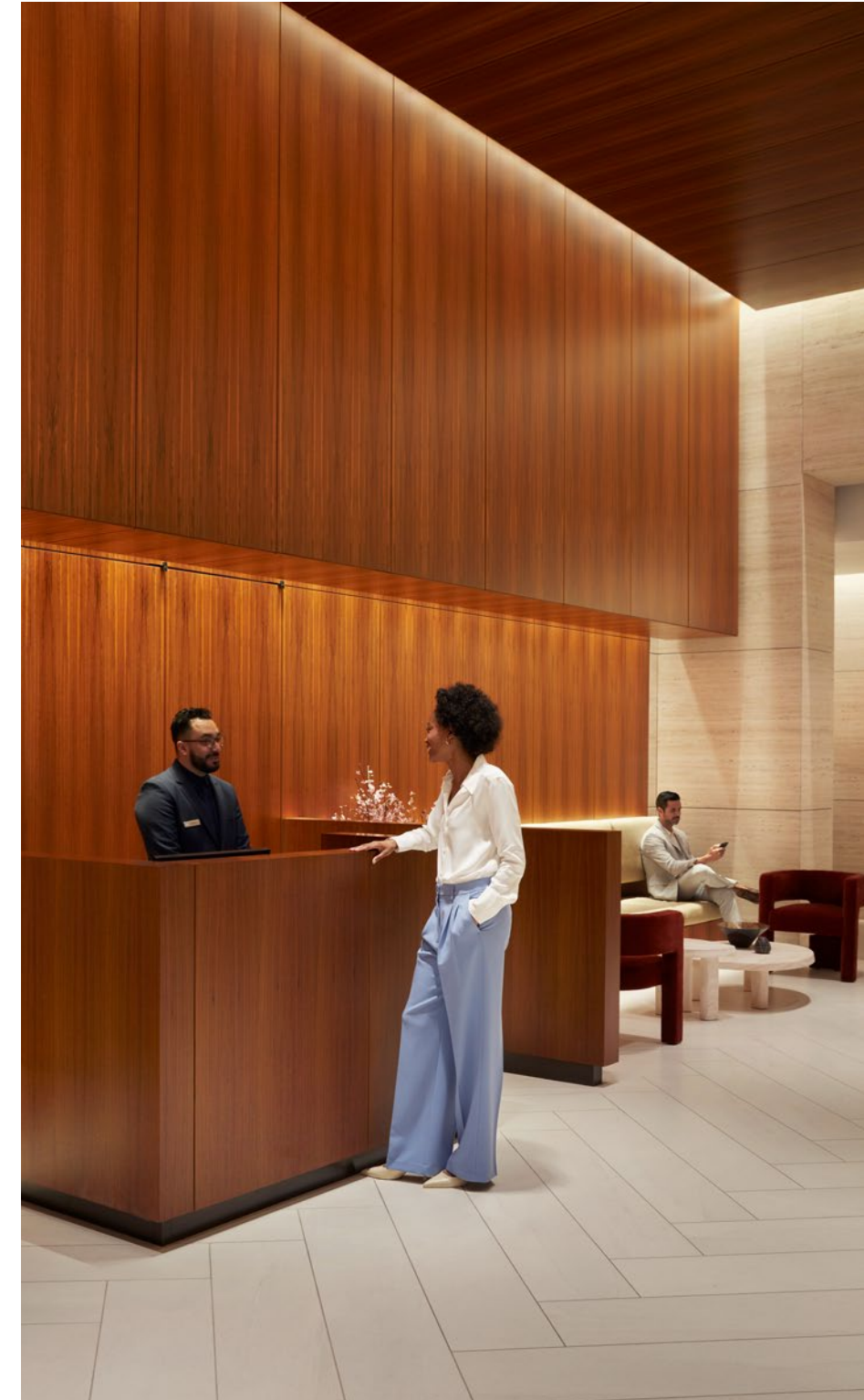
No matter what you're looking for, you can find it at CitySpire.

- 24-story boutique office building
- Available spaces ranging from 2,000-7,000 SF
- Modern, thoughtfully designed pre-build opportunities with high-end finishes
- Scale your business seamlessly with a range of flexible and versatile workspaces



# An Unforgettable First Impression

At CitySpire, your people and their growth are at the center of everything we do. From the moment you step inside, you can feel every detail is carefully considered. From the music in our lobbies to our elevated soft seating, our new hospitality-inspired common areas create a warm, welcoming environment to help you and your team thrive. Everything, including our renovated elevator cars, will make a lobby experience that creates a lasting impression.







# Everything You Need. All in One Place.

## Amenities for all aspects of life.

At CitySpire, we provide world-class amenities and a harmonious environment, so you can experience your perfect workday. Our Studio spaces are designed with everything in mind to make your team thrive, including modern conference rooms equipped with Logitech video conferencing equipment and seating for a team of up to 30.

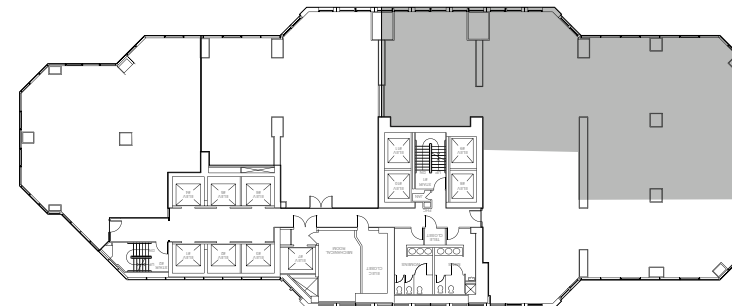
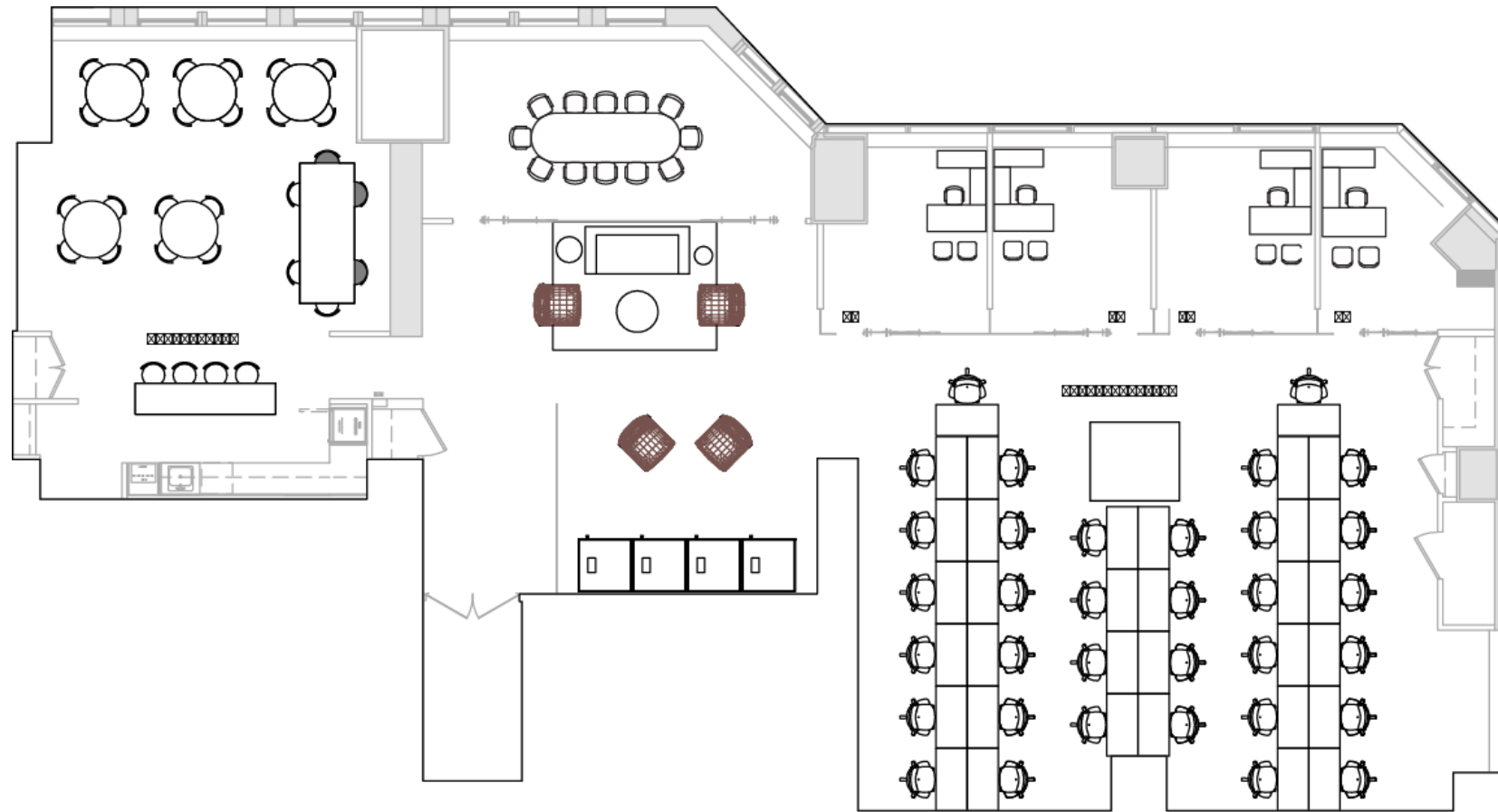
When it's time for a moment of relaxation, enjoy our wellness lounge or sign up for unique programming like yoga or meditation sessions with our ZO app. Want to break for lunch with colleagues? Enjoy the common area in our pantry—expanding in 2024—where you can take advantage of spacious seating or make yourself a hot cup of coffee or tea.



## 11<sup>th</sup> Floor

Suite 1104  
6,060 RSF  
Available Immediately

4 offices  
1 conference room  
Open work area  
Reception  
Pantry  
IT/Storage  
Furnished and wired





# **Elevator Lobby and Office Reception Rendering**





# Pre-Build Offices and Collaborative Space





# Pre-Build Conference Room and Pantry





# Pre-Build Private Offices, Open Workspace and Pantry

