



155

East 48th

Boutique HQ Building

Entire 2nd - 5th Floor
5,200 RSF

Entire Ground Floor
4,500 RSF

*Additional Garden Terrace

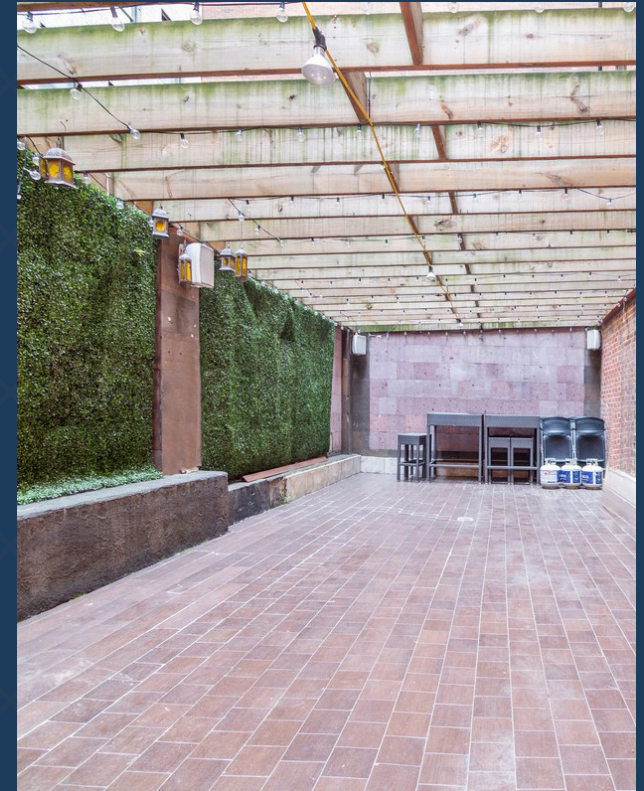
Lower Level
3,300 RSF

Total
Approximately 29,000 RSF

155

East 48th

- *Prime Midtown Location*
- *Ideal for Non-Profit, School, Medical & Family Offices*
- *Built Space with Meeting Rooms, Offices & Large Town Hall Space*
- *Full Commercial Kitchen in Lower Level*
- *Prominent Outdoor Garden Space*
- *Parking Garage Directly Next to Building*





Hotels

- 1 Residence Inn New York Manhattan/Midtown East
- 2 Hotel 48LEX New York
- 3 The Lexington Hotel, Autograph Collection
- 4 InterContinental New York Barclay
- 5 Roger Smith Hotel
- 6 The Bernic Hotel New York City
- 7 Best Western Plus Hospitality House
- 8 San Carlos Hotel
- 9 The Fifty Sonesta Hotel New York
- 10 The Kimberly Hotel
- 11 The Benjamin Royal Sonesta Hotel

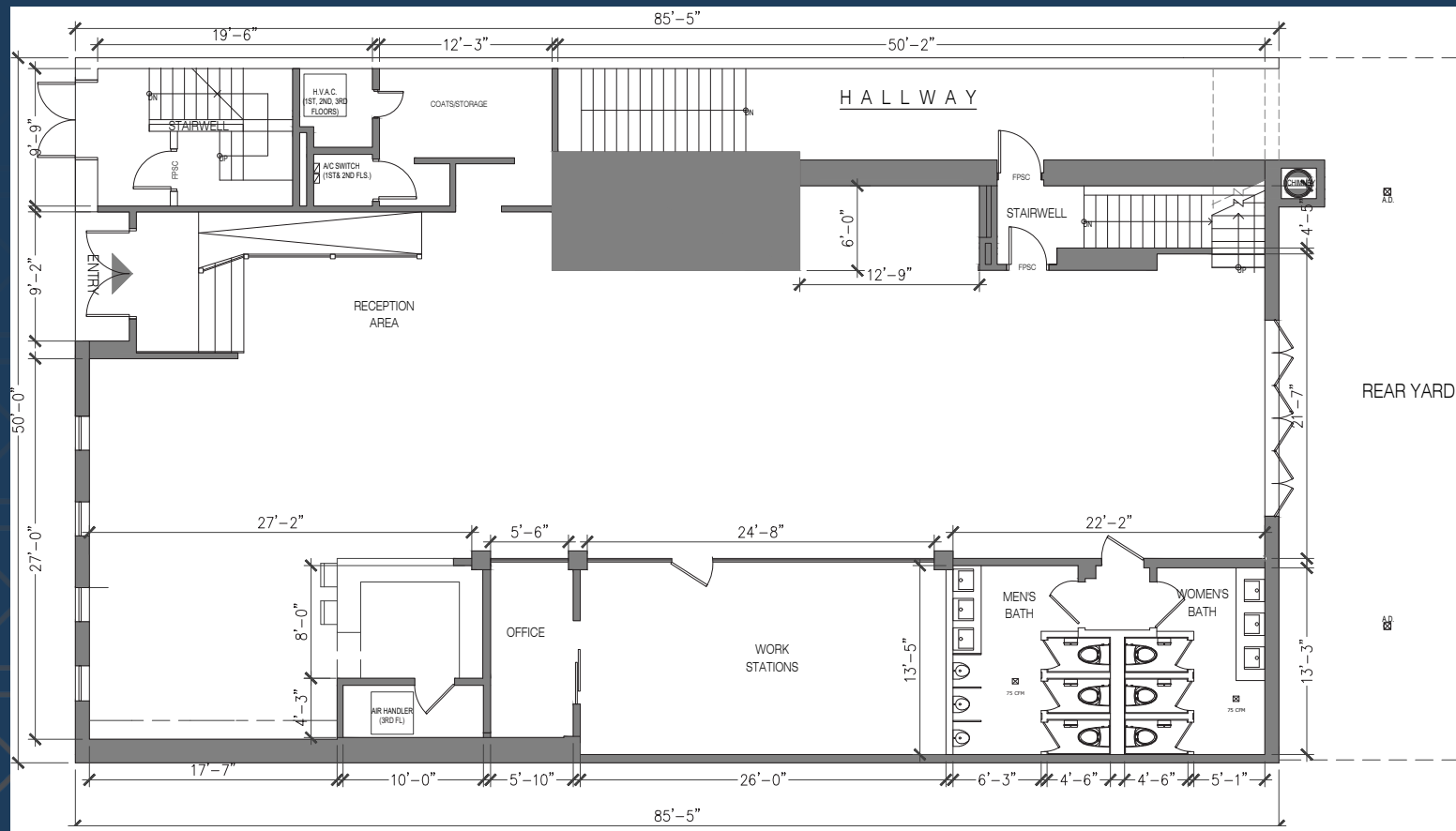
Restaurants

- 1 Avra
- 2 Sea Fire Grill
- 3 Brasserie Cognac 48th
- 4 The Stayton Room
- 5 Allora
- 6 Smith & Wollensky
- 7 tán
- 8 Gyu-Kaku Japanese BBQ
- 9 Abaita
- 10 Barolo East
- 11 Wollensky's Grill
- 12 Park Avenue Kitchen by David Burke

155

East 48th

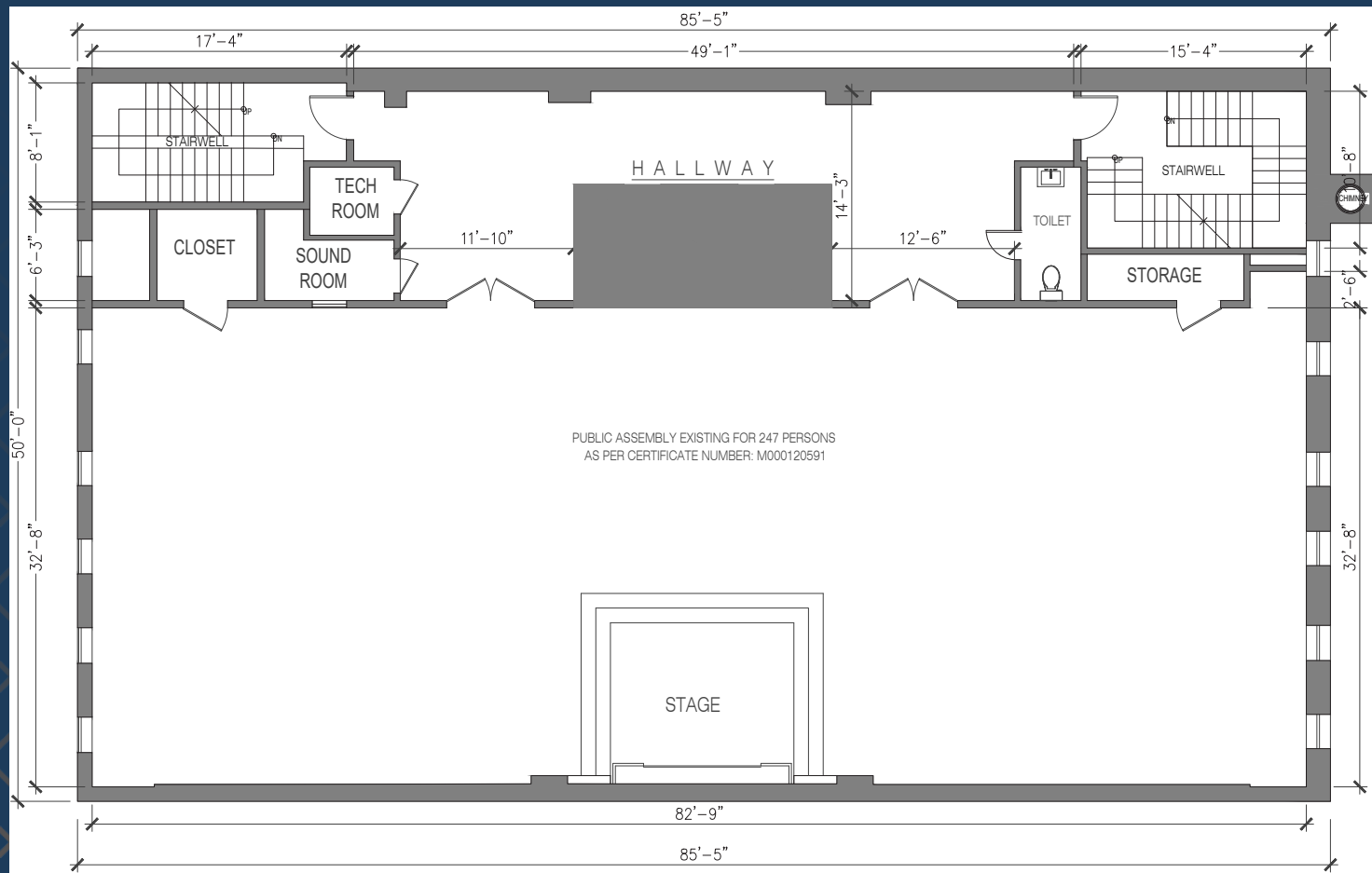
1st Floor: 4,500 RSF



155

East 48th

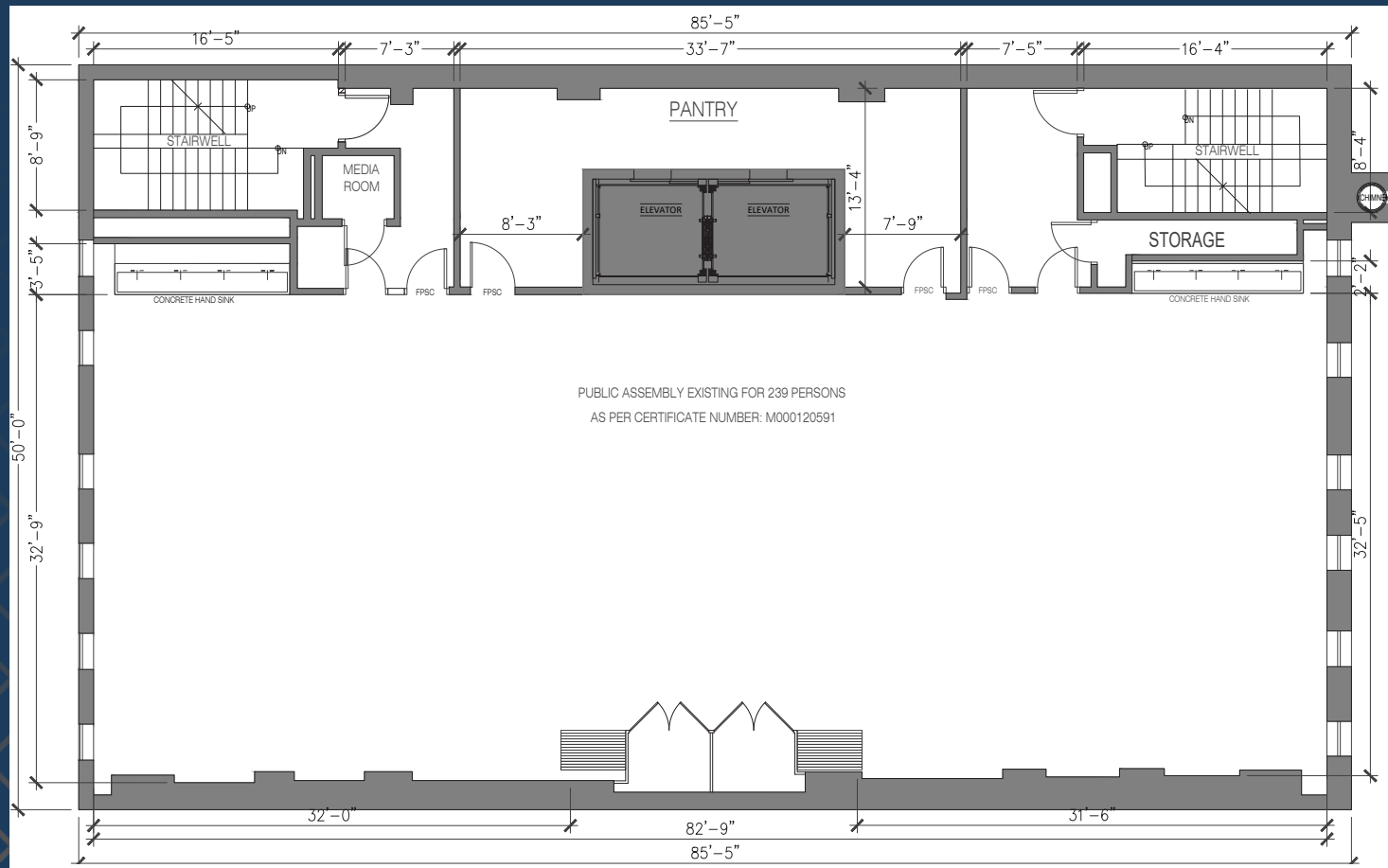
Second Floor: 5,200 RSF



155

East 48th

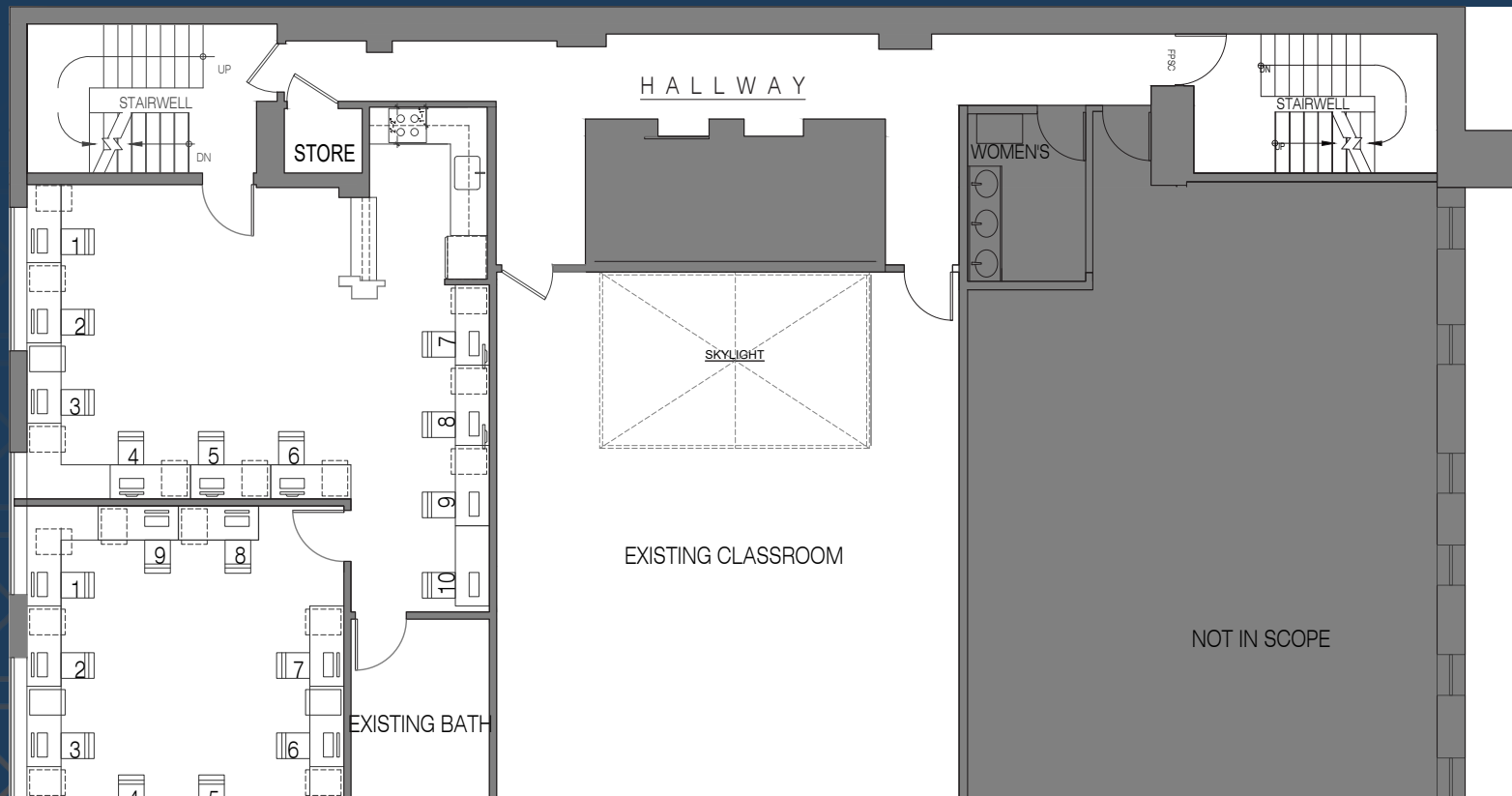
Third Floor: 5,200 RSF



155

East 48th

Fifth Floor:
5,200 RSF





155

East 48th