

MULTIPLE SPACES | DIRECT



← CONCOURSE

• Weight Watchers
• Catalyst SPORT

1210

BROADWAY



1210

BROADWAY

Partial 12th Floor (1206) 3,496 SF

Partial 14th Floor (1400) 3,546 SF

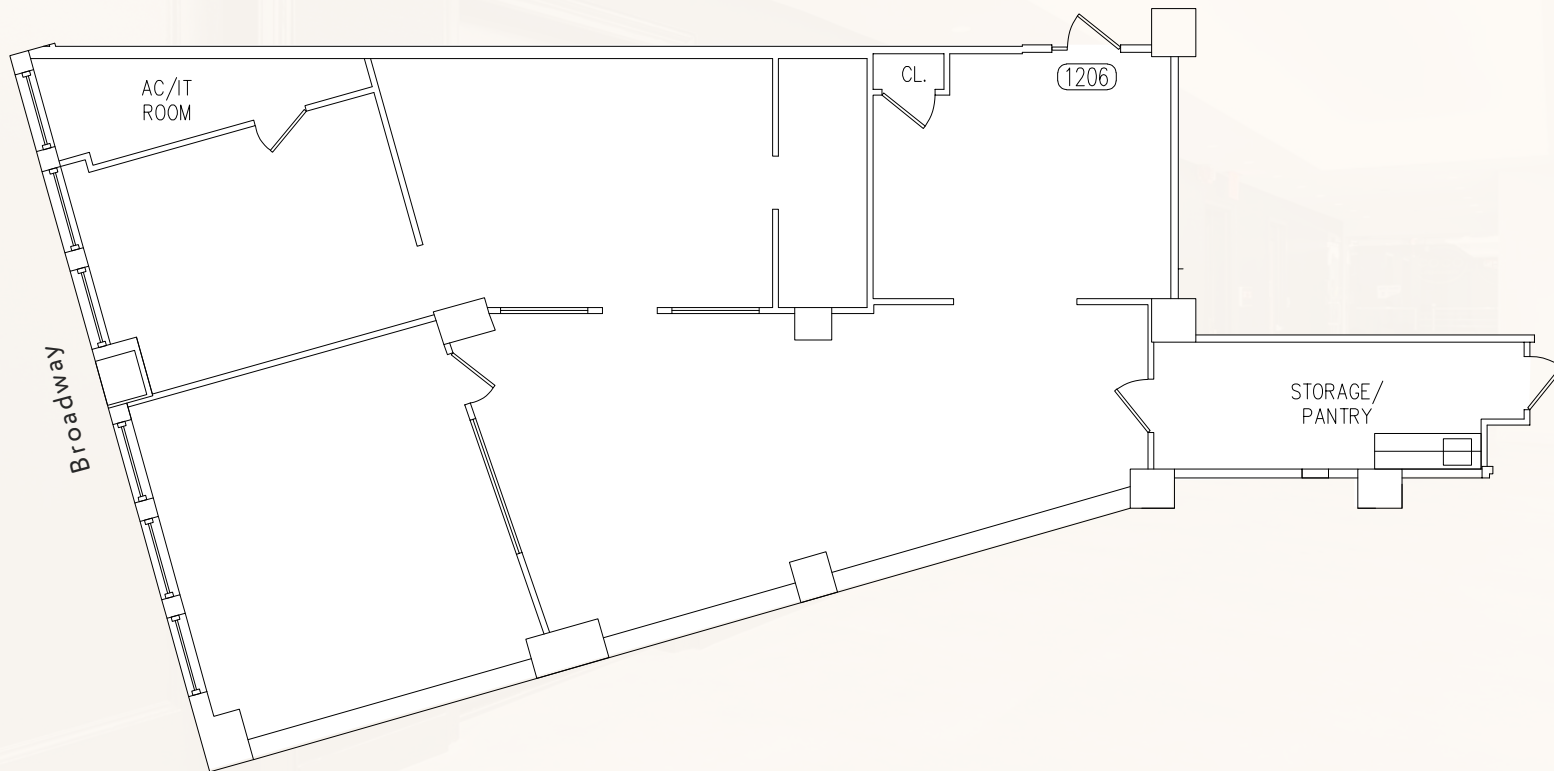
Term Negotiable

Lease Type Direct

- Recent \$20 million in capital improvements to the building include a new lobby, fire alarm system, new common corridors and restrooms throughout the building and a new destination dispatch elevator system
- Operable windows throughout all spaces
- Tenant controlled air conditioning
- Centrally located within walking distance of Grand Central Terminal, Penn Station, Port Authority, Path and Bryant Park
- Immediate access to 1, 2, 3, 7, A, C, E, N, Q, R, S

FLOOR PLANS

PARTIAL 12TH FLOOR
CURRENT CONDITION: 2ND GEN



Suite 1206
3,496 SF