

153 West 27th Street

Chelsea, New York

Between Sixth and Seventh Avenues

Building Overview

153 West 27th Street is a 12-story building located in the heart of Chelsea. The building is in a prime location between 6th and 7th Avenues, close to major transportation and subway lines. Built in the 1900s, this building offers spaces that set themselves apart from the rest. A converted factory building, 153 offers tenants the industrial chic aesthetic currently trending among tech tenants in New York.

Building Highlights

- 12-story, 106,920 SF office building
- Blocks from Penn Station
- Some of the best restaurants/bars located nearby
- Tenant controlled A/C

Lease Term

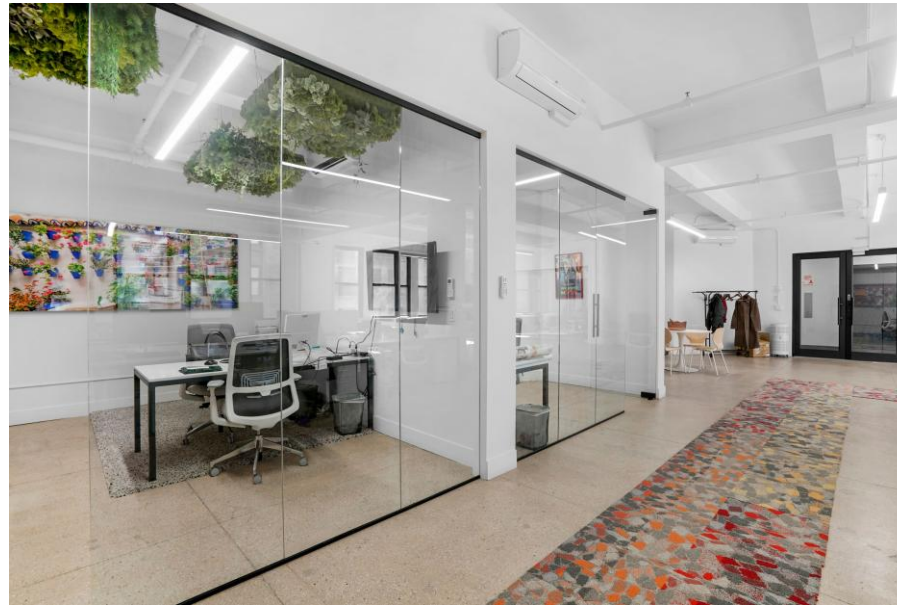
Negotiable



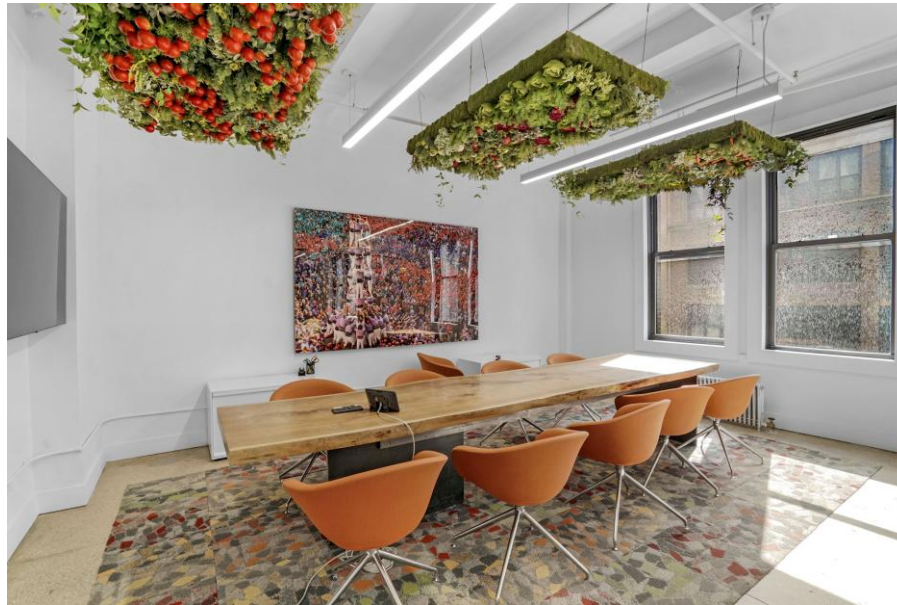
Space Description

Built space with one (1) large all hands conference room to accommodate 12 employees, two (2) private offices / meeting rooms an open area for ~20 workstations, wet pantry and lounge area.

The space offers hardwood floors, exposed ceiling, brand new 8-foot linear lighting.



Additional Photos



Floor Plan

153 West 27th Street

Partial 5th Floor

3,500 SF

\$15,000 per month

Open Seating

Workstations	16 – 20
Reception Area	1

Collaboration Space

Office/Meeting Rooms	2
Conference Rooms	1

Support

Wet Pantry	1
------------	---

