

# For sublease

**1350 Broadway (Btwn 35th & 36th Streets)  
Partial 19th Floor (Suite 1910)**

3,536 RSF Available

[Floorplan](#)

## Space specifications

- Available immediately
- Pricing available upon request
- Term through December 30, 2027
- Brand new ESRT turnkey suite installation
- Furniture can be made available

## Overview

Plug-and-play ESRT IEQ suite opportunity with 4 private offices, 1 conference room for 10-people, 2 meeting rooms for 5-people each, 1 IDF room, storage room, pantry and an open area with 8 workstations

**4**

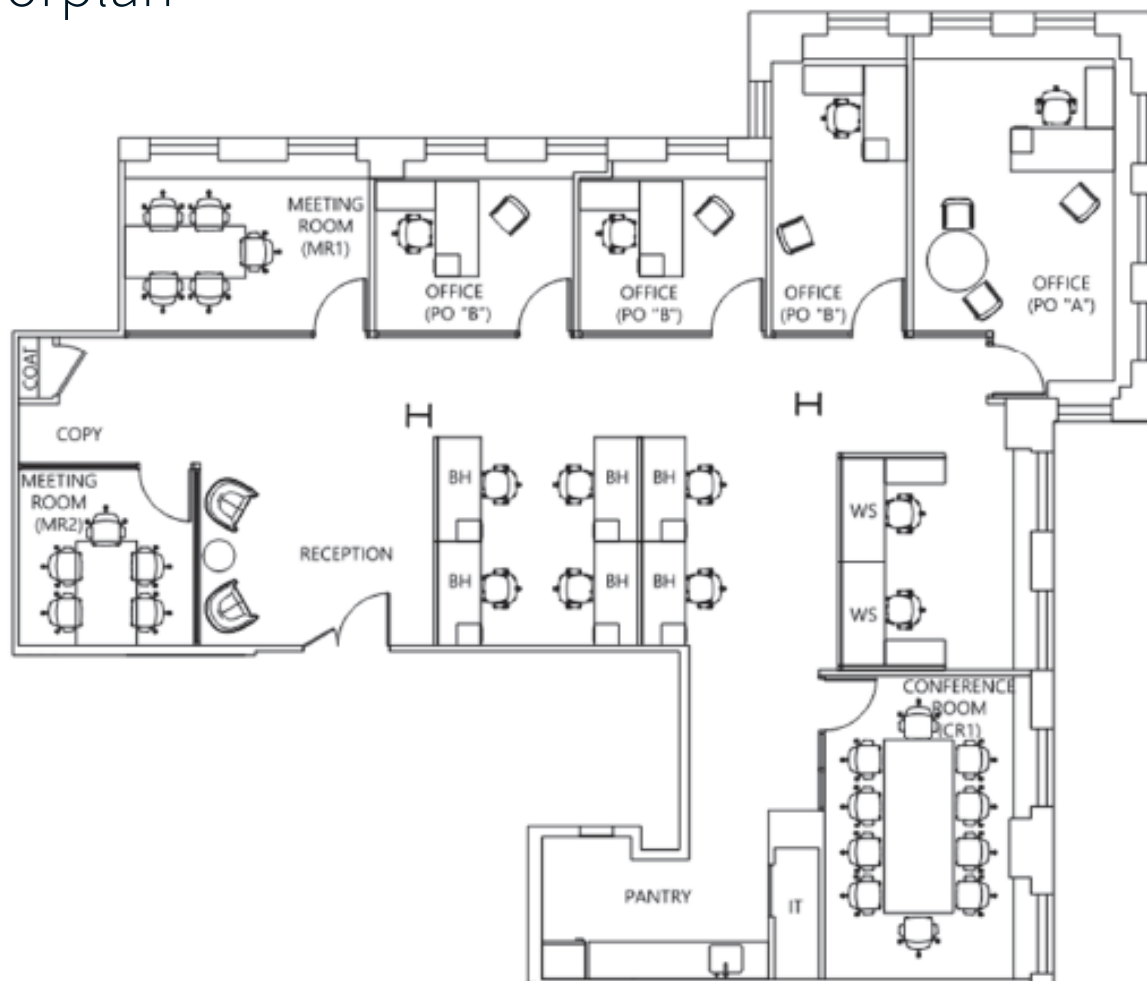
Private offices

**3**

Conference / meeting  
rooms



# Floorplan

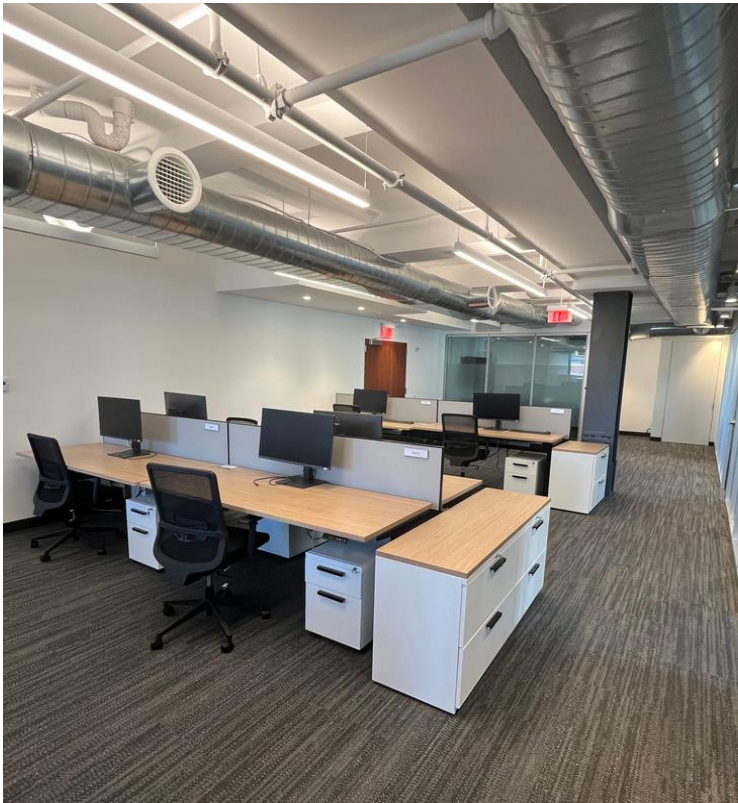


## Space specifications

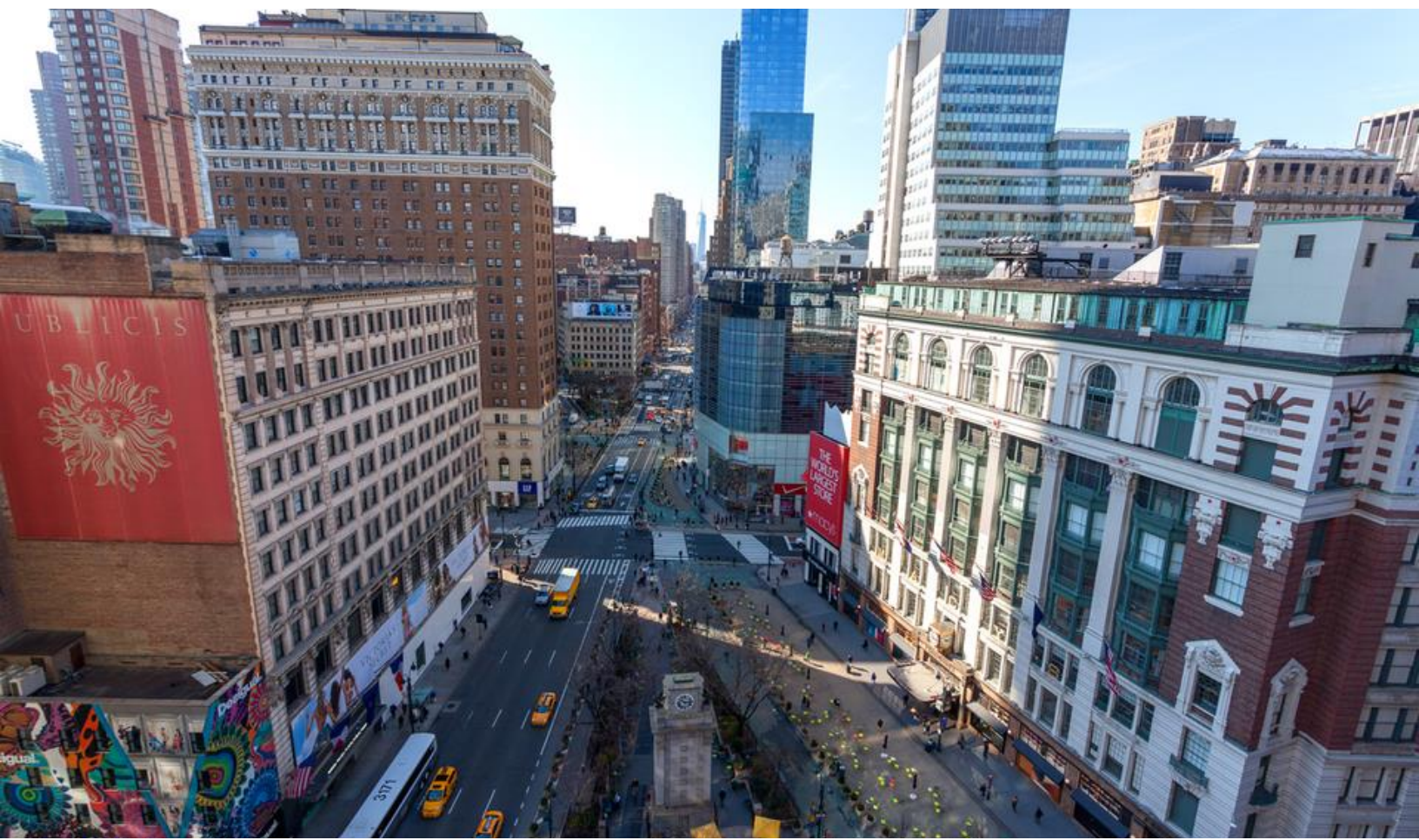
- 4 private offices
- 1 conference room for 10-people
- 2 meeting rooms for 5-people each
- Open area with 8 workstations
- Reception area
- Pantry
- 1 IDF room
- 1 storage room
- Copy area











## Building features

- New Lobby and Windows
- Lobby Ceiling Restoration
- Renovated Elevators
- Air-Conditioned Public Corridors and Restrooms
- Upgraded Building-Wide Systems
- In-Building Retail Includes:
  - Starbucks
  - Santander Bank
- Easy Access to Public Transportation
  - Penn Station (5 mins)
  - Port Authority Terminal (10 mins)
  - Grand Central (15 mins)
  - Steps from 14 Subway Lines