

# 767 Fifth Avenue

Between 58th & 59th Streets

**Area:**

Partial 23rd Floor: 3,909 RSF

**Rental Rate:**

Upon Request

**Possession:**

Immediate

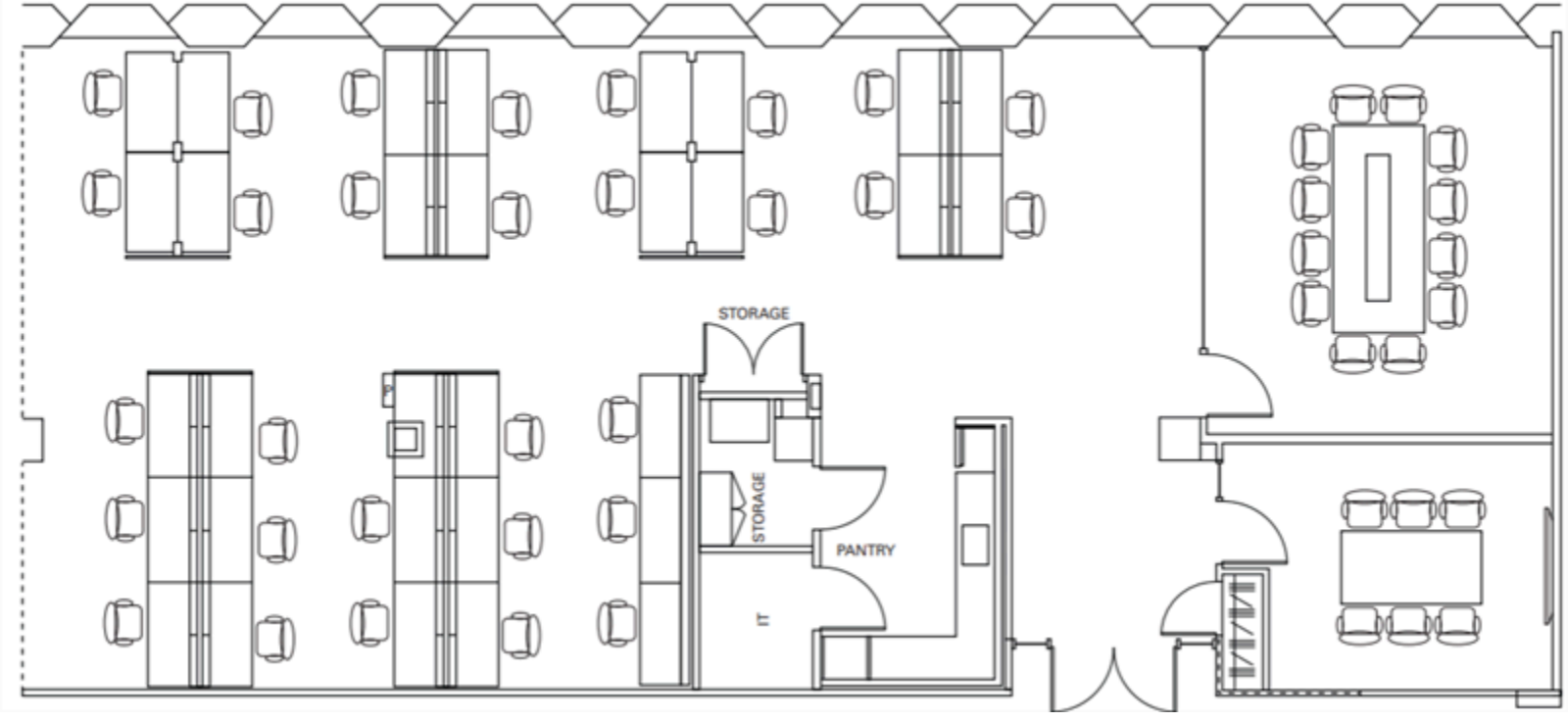
**Term:**

December 30, 2025



**Comments**

- Plug & play installation
- Furniture included
- Central Park views



**Built With**

- 1 Large Conference Room
- 1 Breakout Room
- Pantry
- Reception
- Open Area for 30 People

The information contained herein has been obtained from sources deemed reliable but has not been verified and no guarantee, warranty or representation, either express or implied, is made with respect to such information. Terms of sale or lease and availability are subject to change or withdrawal without notice.

©2025 Newmark. All Rights Reserved.