

FOR SUBLEASE

64 West 48th Street

DIAMOND DISTRICT
NEW YORK, NY

Area

16th Floor: 3,918 SF

Term

February 2027

Asking

Negotiable

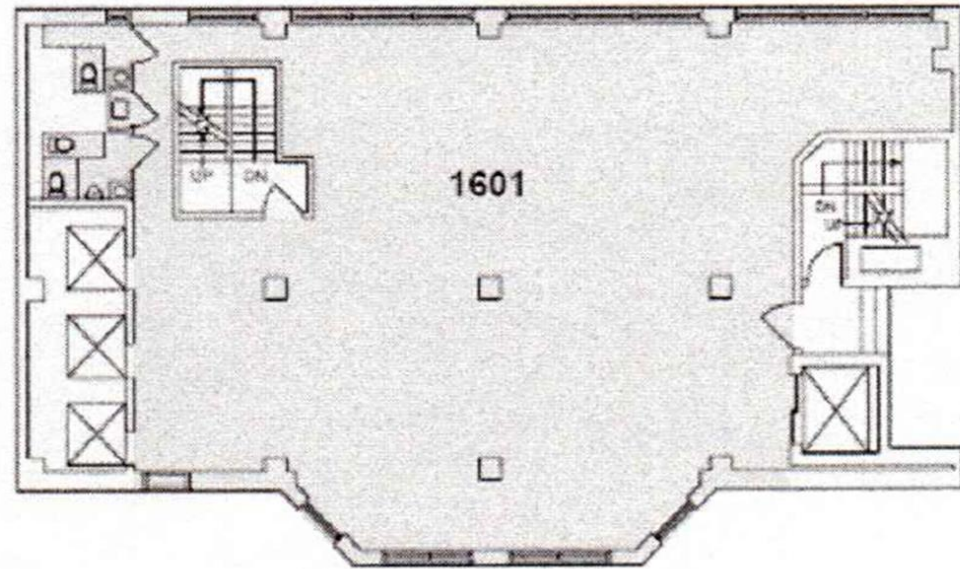
Space Type

Office / Jeweler Space

Highlights

- Full-floor identity with direct elevator presence
- Close proximity to the (B, D, F, M) subway station
- Move-in ready installations for multiple uses
- Located in the heart of New York's Diamond District
- Steps from Grand Central Station
- Well-capitalized sublandlord
- Spaces to be leased together or separately
- Strong ownership group

16th Floor – 3,918 RSF



SPACE NOTES

- Pre-built office / administrative space with (2) offices, (5) eight-person conference rooms, and (12) workstations
- High-end, modern installation with glass-fronted offices and exposed ceilings
- Double-door secured entry with pass-through window (ideal for reception or security checkpoint)
- Fully furnished and wired - immediate plug-and-play potential for a tenant seeking minimal buildout
- Dedicated Kitchenette / Break Area with full fridge, cabinets, and tile backsplash
- Abundant natural lighting with large, perimeter windows

