

# 330W34

## Located at the Epicenter of New York City

Welcome to THE PENN DISTRICT, where your corporate offices can thrive in the ultimate epicenter of business and connectivity. Located at the very heart of New York City, this vibrant neighborhood offers the ideal location for your new office. With its strategic location linked to Penn Station, you will benefit from seamless access to the city's pulse with direct access to city's busiest subway lines and regional trains connecting New York City to the suburbs of New Jersey and Long Island.

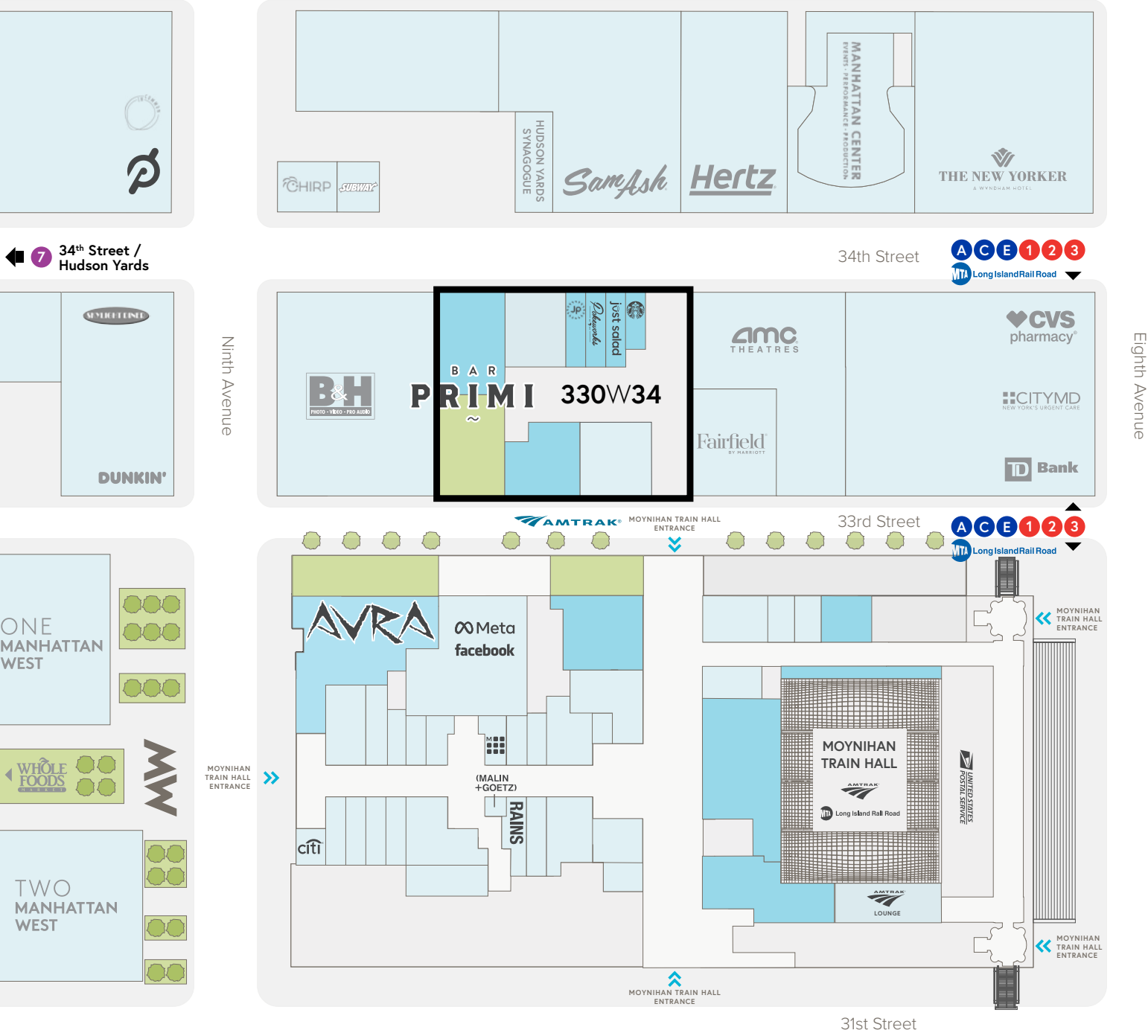




BEST-IN-CLASS LOCATION

Located at Transportation  
in the Center of Manhattan

330 West 34th Street is the most accessible building in New York City, and sits on top of the busiest transportation hub in North America, Penn Station. The district is serviced by 15 subway lines and is directly connected to Penn Station, servicing Amtrak, LIRR, NJ Transit, Path trains, and coming in 2027, the Metro-North Rail Road.







# 330W34

## Unique Opportunity Located in the Center of New York's New West Side

There's nothing quite like being on the forefront of a revolution. With new Class A lobby, floor plates ranging from approximately 30,000 RSF to 50,000 RSF, high-profile branding opportunities for an anchor tenant, the possibilities are truly limitless. The west side of Manhattan is expanding, bringing with it exciting new spaces and opportunities. 330 West 34th Street offers the prospect of being among the first to call the hub of New York City's auspicious future home.



# Where Creativity Clicks

Step into the future at 330 West 34th Street's modernized office lobby designed by HOK Architects. Featuring a sleek and modern aesthetic, the lobby boasts eight destination dispatch elevators, ensuring efficient and seamless vertical transportation for your employees and visitors alike. Additionally, with direct access to the building's tenant lounge, this space serves as a dynamic hub where innovation meets comfort, fostering collaboration and community among occupants.





330W34 - TENANT LOUNGE







# 330W34

## AVAILABLE OPPORTUNITIES





# 330W34

web.com®

MARQUEE BRANDS

Deutsch

STRUCTURETONE

6<sup>TH</sup> FLOOR PRE-BUILT SUITES  
IMMEDIATELY AVAILABLE

Foot Locker



just salad  
WRAPS, BOWLS + MORE



IMMEDIATELY AVAILABLE

FLOOR	AREA	SLAB HEIGHT
E 18 <sup>th</sup> Floor	27,796 RSF	16'-9"
E 17 <sup>th</sup> Floor	27,706 RSF	12'-9"
E 16 <sup>th</sup> Floor	28,137 RSF	11'-9"
Total	83,649 RSF	

IMMEDIATELY AVAILABLE

FLOOR	AREA	SLAB HEIGHT	OUTDOOR AREA
E 9 <sup>th</sup> Floor	43,096 RSF	11'-6"	605 SF
E 8 <sup>th</sup> Floor	43,948 RSF	11'-6"	1,184 SF
E 7 <sup>th</sup> Floor	45,649 RSF	11'-6"	
P 6 <sup>th</sup> Floor	35,578 RSF	11'-6"	
Total	168,271 RSF		1,789 SF

BAR  
PRIMI



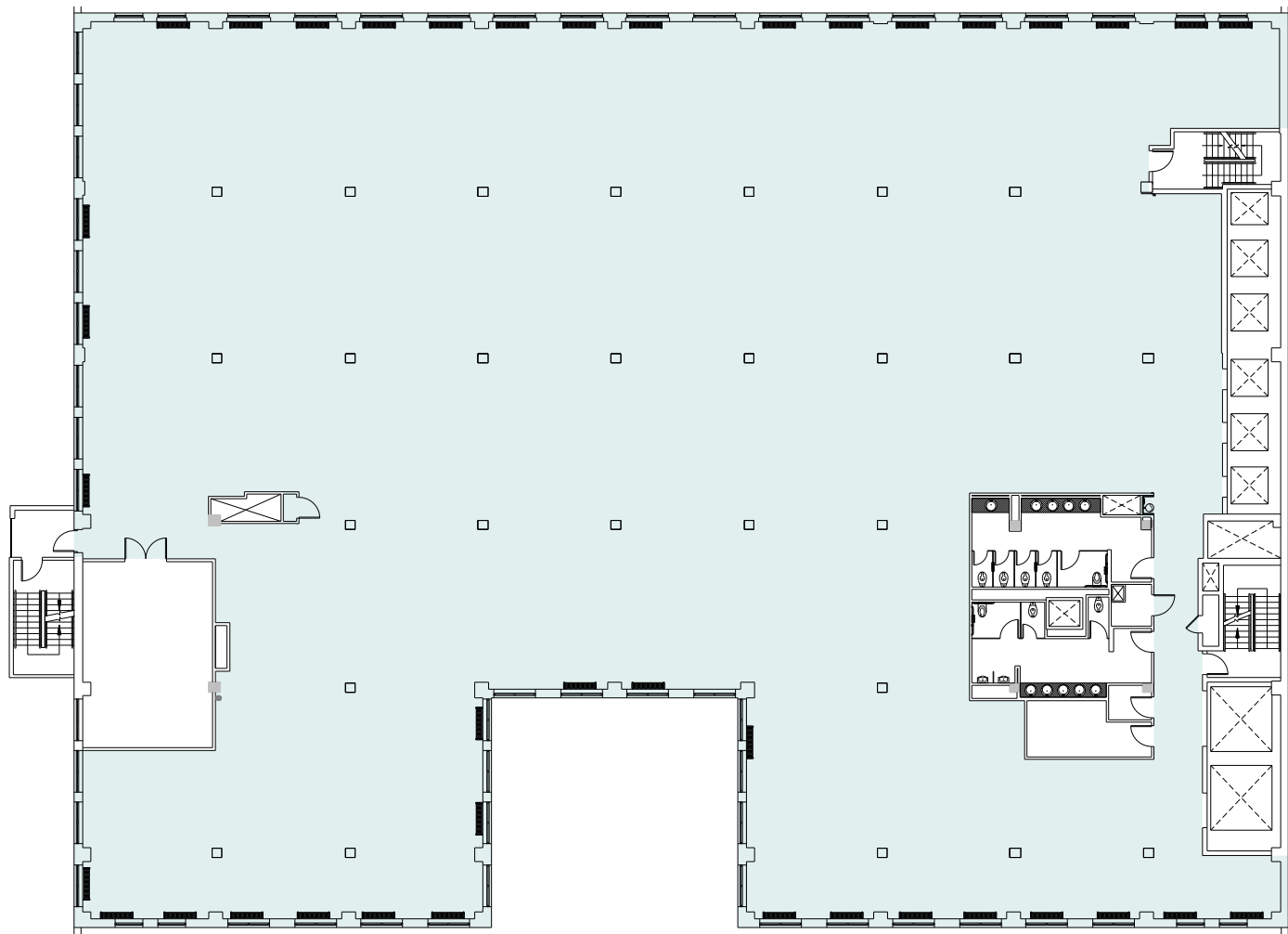
# 330W34

Core & Shell Plans - Floors 16-18

## FLOOR 16

28,137 RSF

34th Street

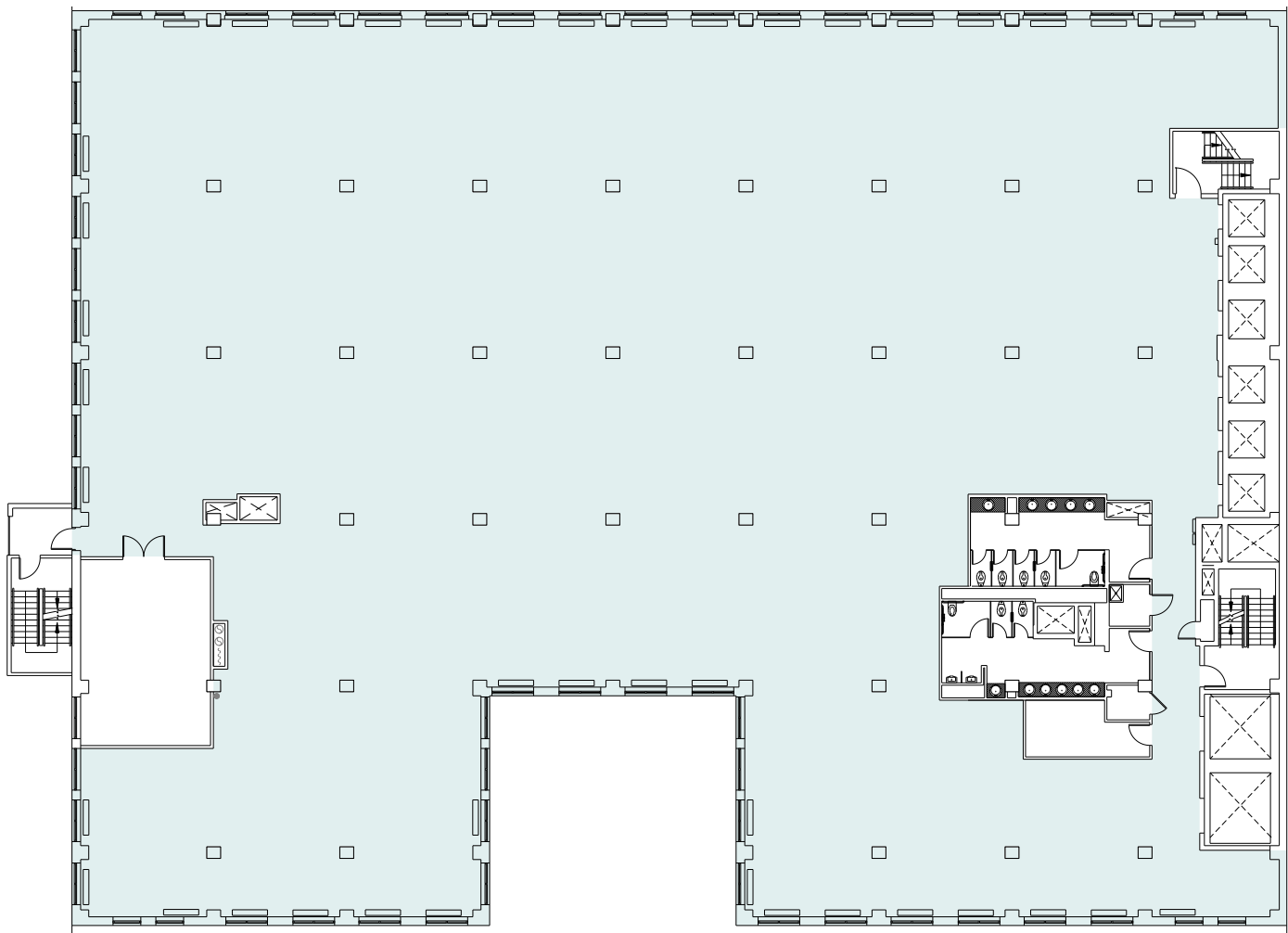


33rd Street

## FLOOR 17

27,706 RSF

34th Street

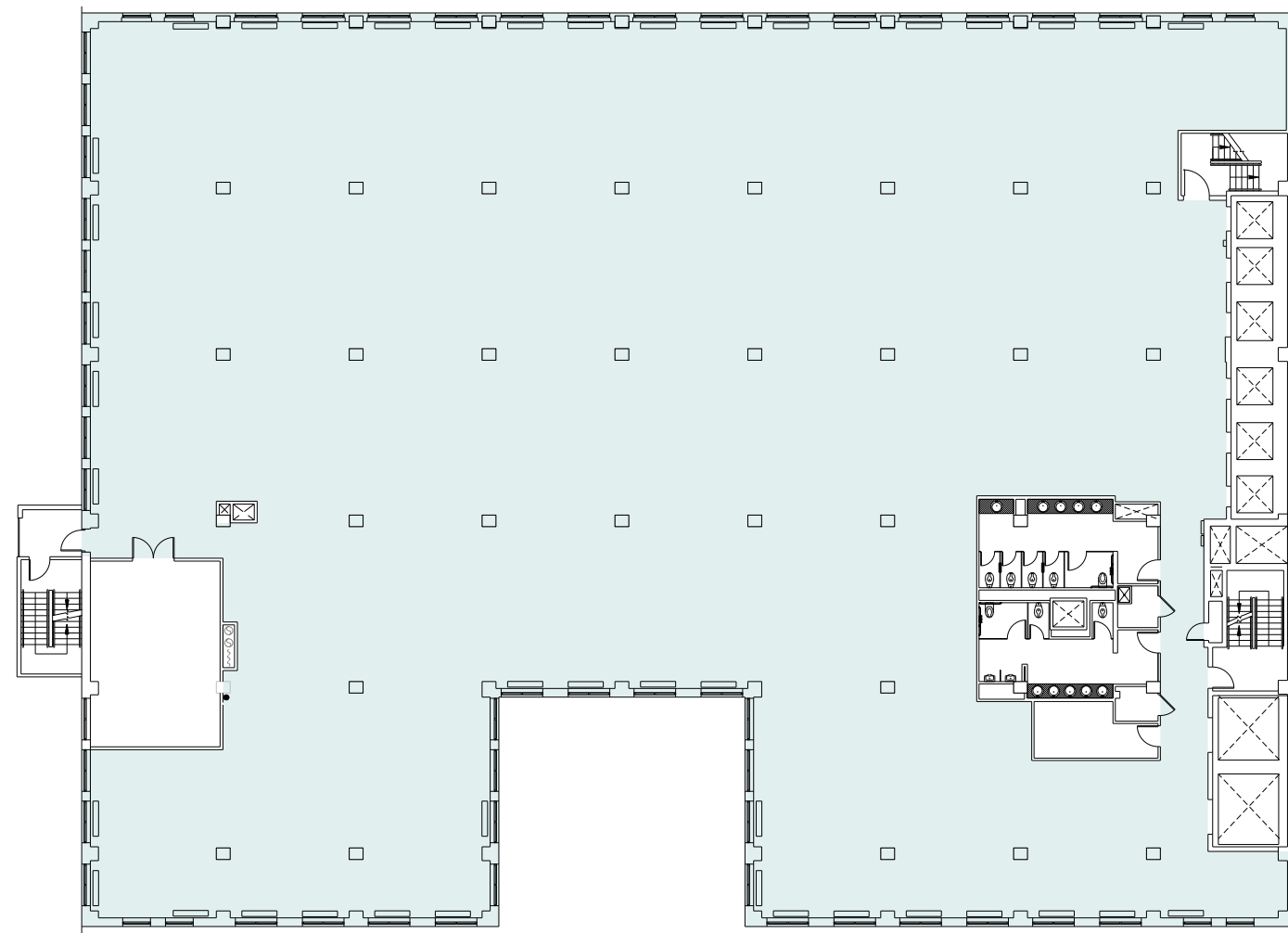


33rd Street

## FLOOR 18

27,796 RSF

34th Street



33rd Street



# 330W34

As-Built Drawings - Floors 16-18

## FLOOR 16

28,137 RSF

34th Street

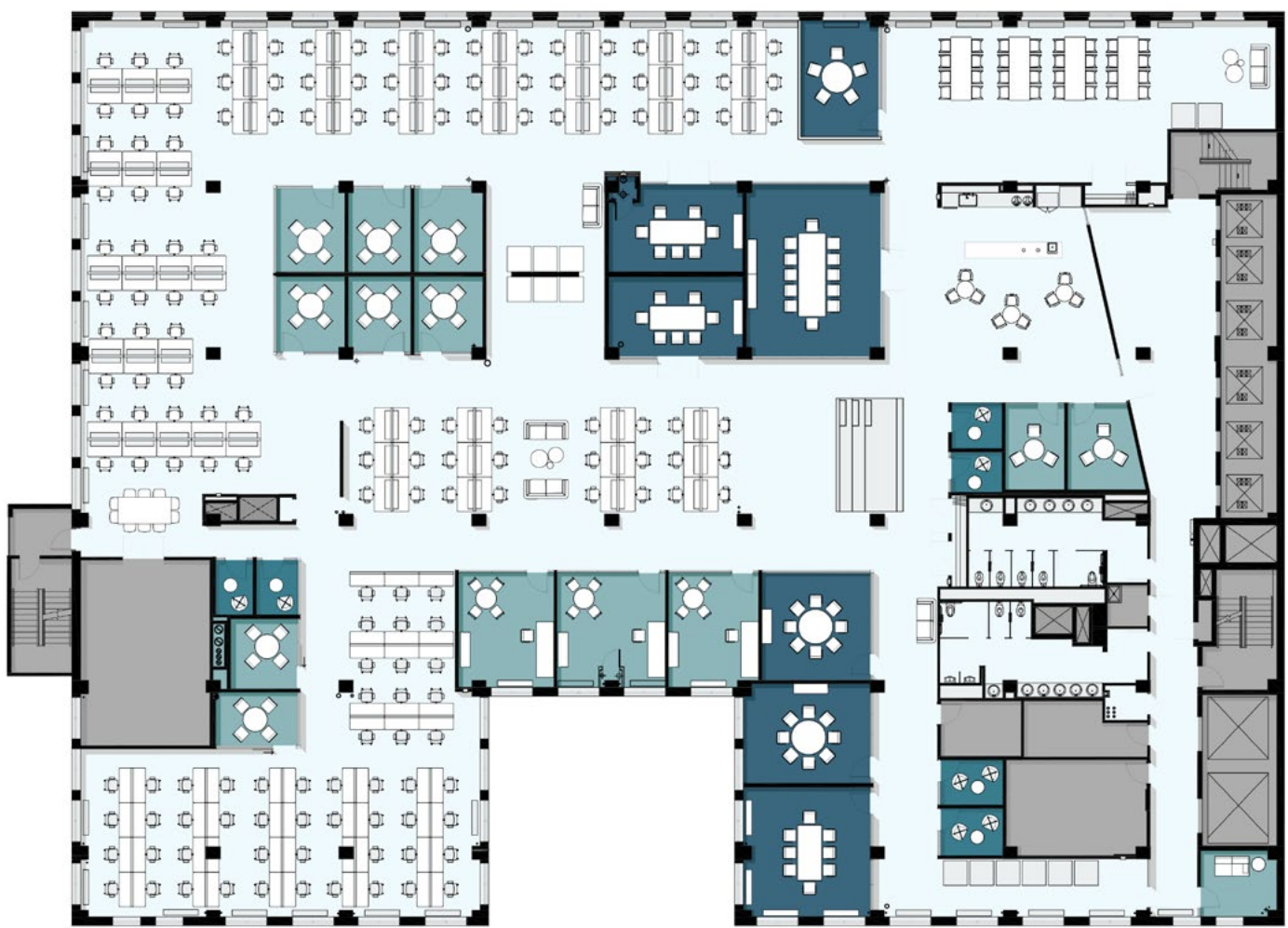


33rd Street

## FLOOR 17

27,706 RSF

34th Street

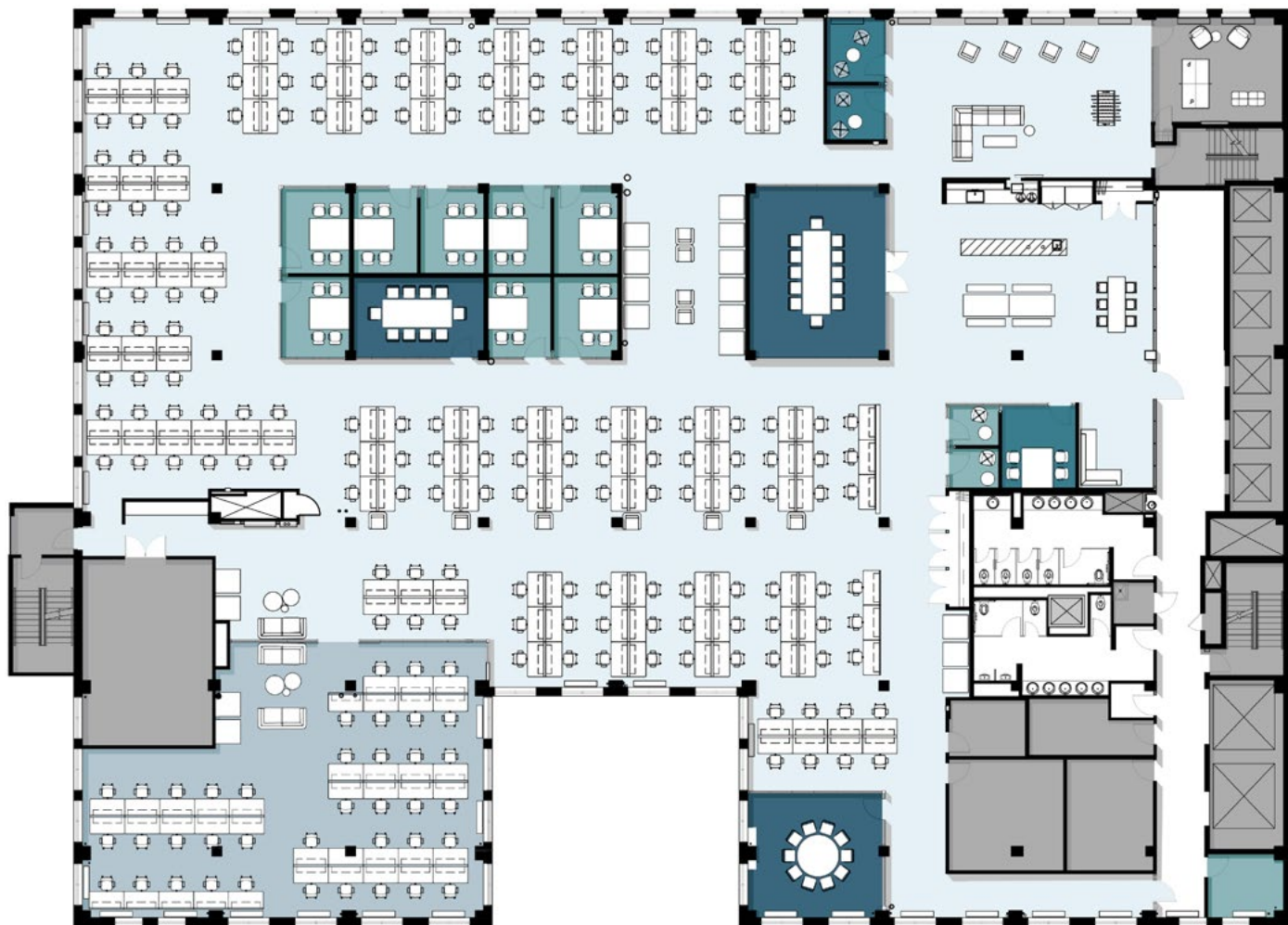


33rd Street

## FLOOR 18

27,796 RSF

34th Street



33rd Street



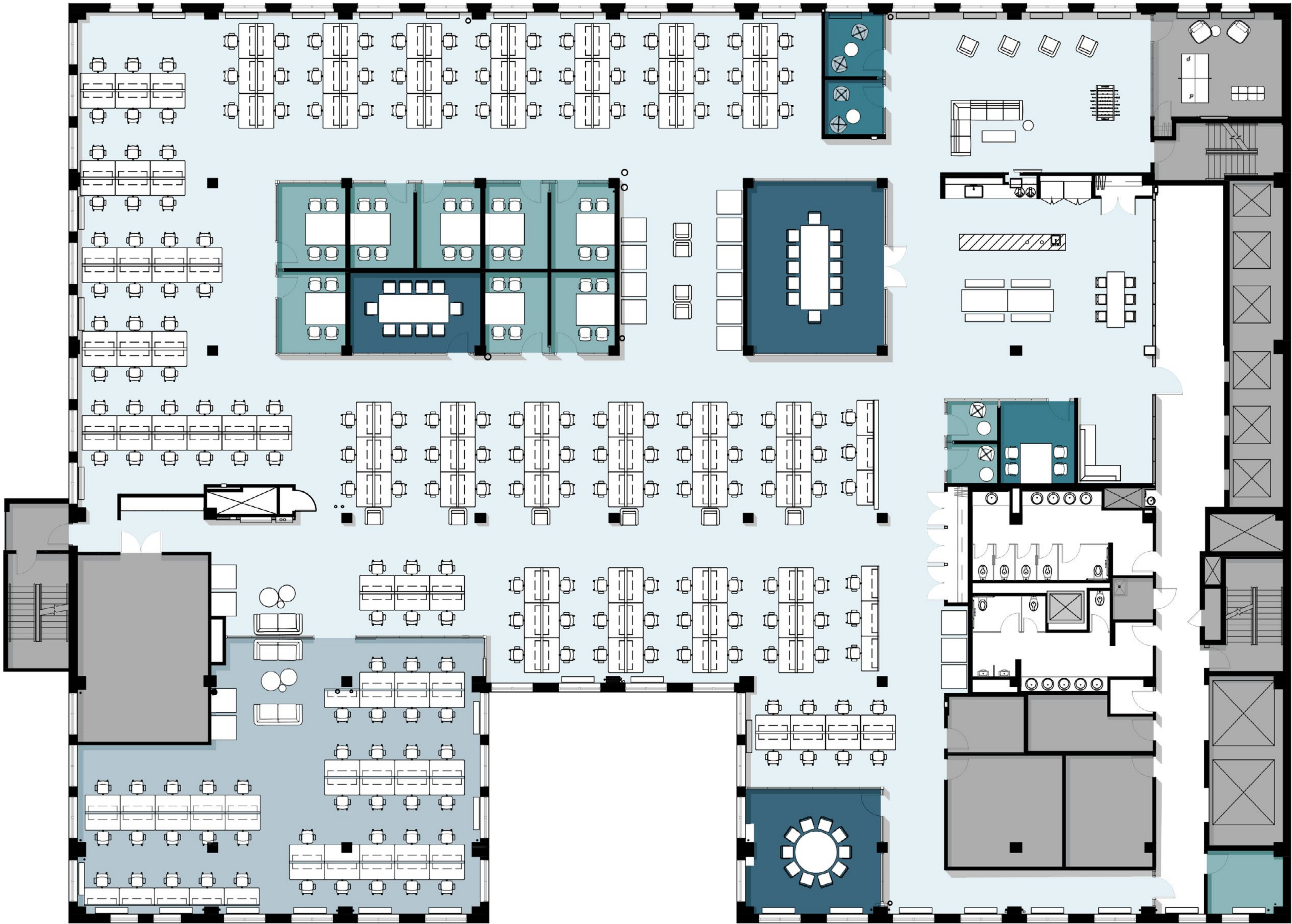
# 330W/34

## FLOOR 16

28,137 RSF

### 199 Total Headcount

- 199 Workstations
- 2 Conference Rooms (10 Person)
- 1 Conference Rooms (12 Person)
- 9 Meeting Rooms (4 Person)
- 4 Meeting Rooms (2 Person)
- 4 Meeting / Lounge
- 1 Pantry
- 1 Cafe / Break Area
- 17 Phone Rooms
- 1 Game Room
- 1 Copy Area
- 1 IT Room
- 2 Coat Closets
- 2 Storage Closet
- 1 Wellness Room





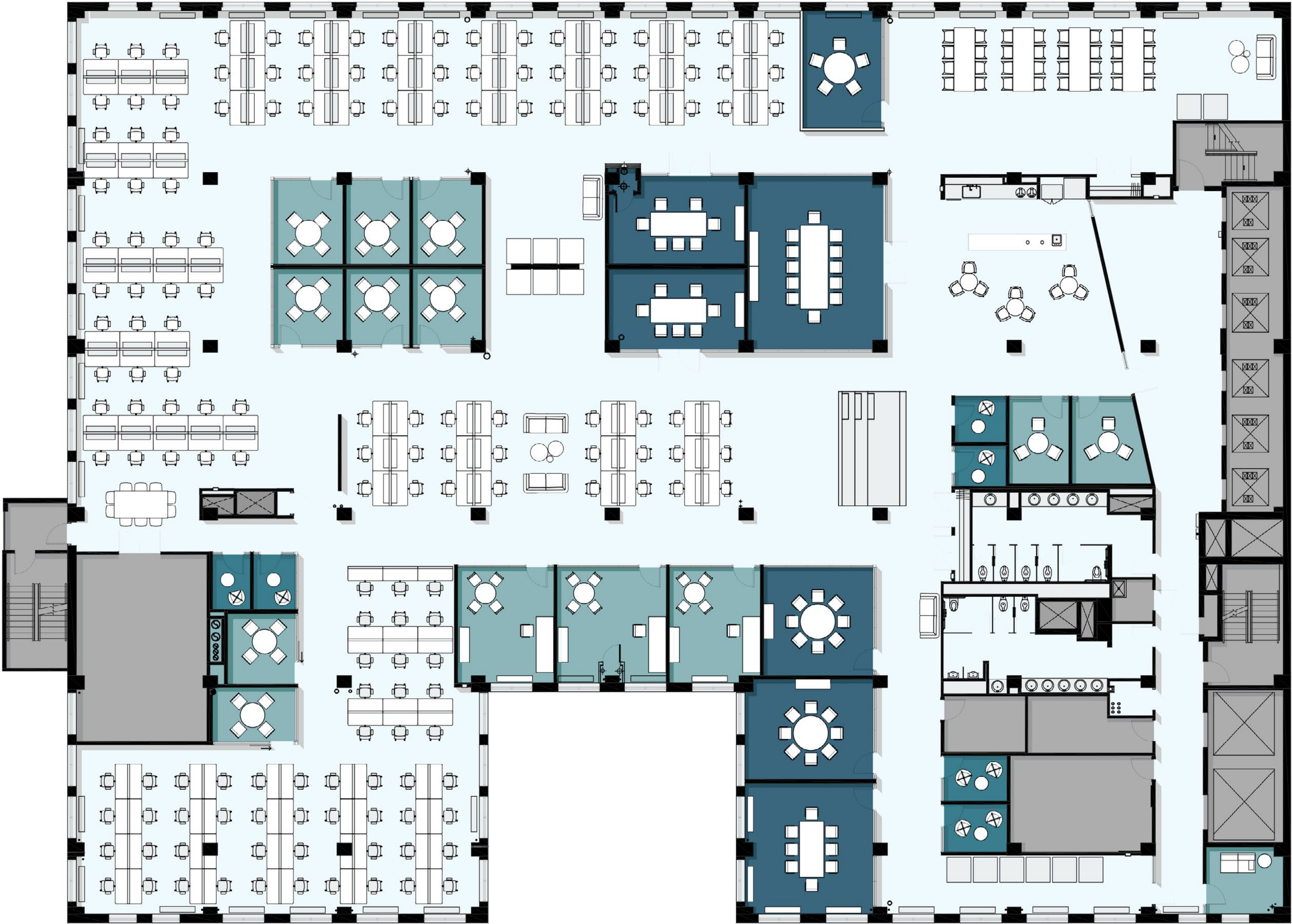
# 330W/34

## FLOOR 17

27,706 RSF

### 158 Total Headcount

- 155 Workstations
- 3 Office
- 1 Conference Rooms (12 Person)
- 6 Conference Rooms (5-8 Person)
- 10 Meeting Rooms (3-4 Person)
- 6 Meeting Rooms (1-2 Person)
- 2 Meeting / Lounge
- 1 Pantry
- 2 Cafe / Break Area
- 14 Phone Rooms
- 1 IT Room
- 2 Coat Closets
- 1 Storage Closet
- 1 Wellness Room





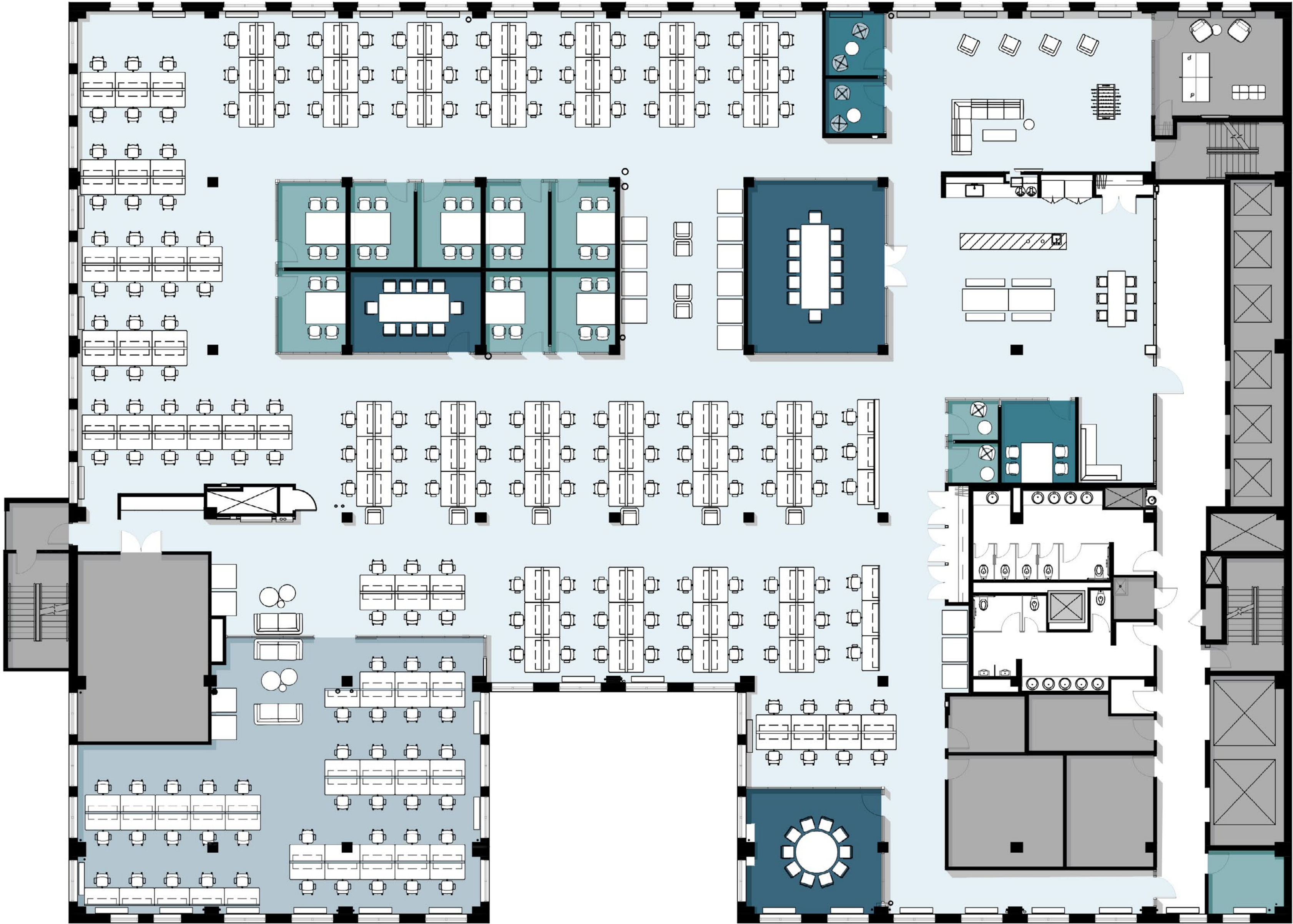
# 330W/34

## FLOOR 18

27,796 RSF

### 171 Total Headcount

- 170 Workstations
- 1 Reception
- 1 Conference Rooms (14 Person)
- 1 Conference Rooms (10 Person)
- 4 Meeting Rooms (4 Person)
- 4 Meeting Rooms (1-2 Person)
- 2 Meeting / Lounge
- 1 Pantry / Cafe
- 14 Phone Rooms
- 2 Treadmill Desks
- 1 Copy Area
- 1 IT Room
- 3 Coat Closets
- 2 Storage Closet
- 1 Wellness Room





# 330W34

Floors 16-18: Existing Conditions

