



521 WEST 26TH STREET
CHELSEA

GALLERY SPACE FOR LEASE

521 WEST 26TH STREET

CHELSEA

This 4,000 square foot, fifth floor turnkey gallery installation features two spacious conference or private viewing rooms, an open gallery area throughout the remainder of the space, a pantry, and two private bathrooms. With large, picturesque windows that allow for signage and 10'5" ceilings, the space receives excellent natural light.

Ideal for a gallery, studio, or creative user, the location is just minutes away from some of Chelsea's most notable galleries. This sublease runs through December 2027.

Square Footage	4,000 SQFT
Asking Rent	Upon Request
Ceiling Heights	10'5"
Term	Through December 2027
Possession	Immediate
Nearby Transportation	34th Street - Penn Station



Long Island Rail Road

23rd Street



28th Street



34th Street - Hudson Yards







GUY
HEPNER





521 WEST 26TH STREET

FLOORPLAN

PROPERTY DETAILS

Total Square Feet

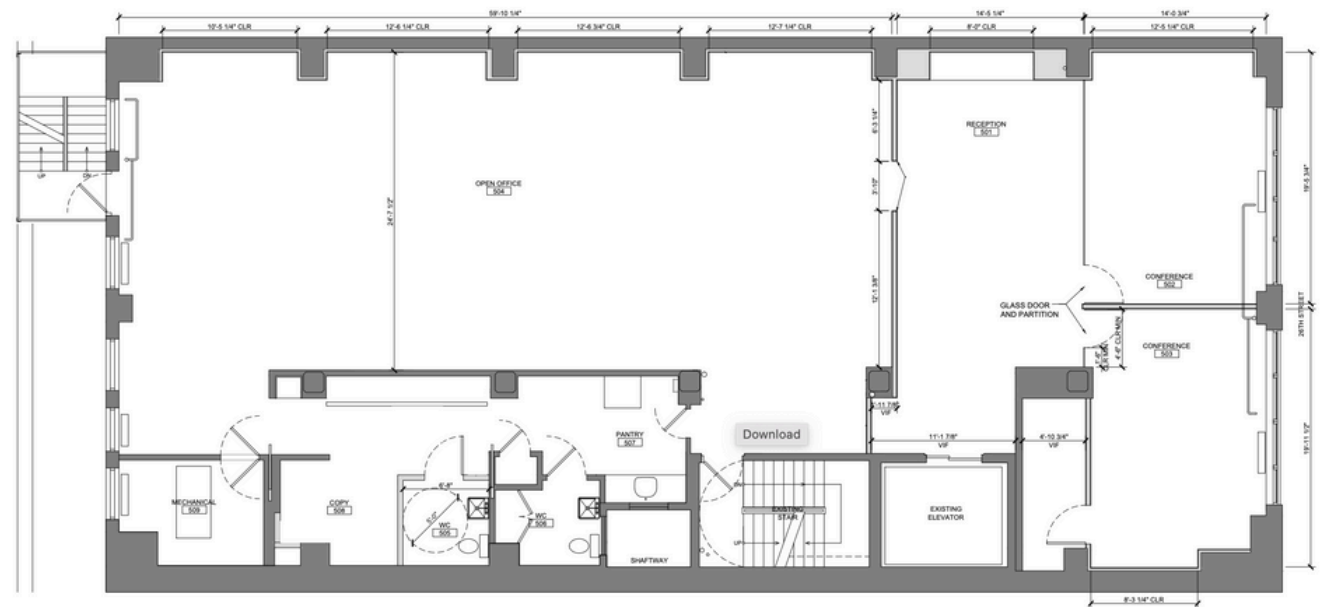
4,000 SQFT

Ceiling Heights

10'5"

Space Highlights

- Turnkey Gallery
- Elevator Opens Directly in Space
- Two Conference/Private Viewing Rooms
- Open Gallery Area
- Pantry
- Two Private Bathrooms
- Art Storage
- Full Floor Presence



Handwritten signature or mark.

This map provides a comprehensive overview of the Chelsea neighborhood in Manhattan. It details the following:

- Streets:** Major thoroughfares like 12th Ave, 11th Ave, 10th Ave, 9th Ave, and 8th Ave are clearly labeled, along with cross streets from W 19th St to W 30th St.
- Parks & Recreation:** Chelsea Park and Chelsea Waterside are highlighted in green.
- Galleries & Arts:** A dense concentration of art spaces is shown, including Dia: Art Foundation, Gagosian, Lehman Maule, and many smaller independent galleries.
- Dining & Retail:** Numerous restaurants, cafes, and shops are indicated by their respective logos and names, such as Highline Pizzeria, KASMIN, and RYAN LEE.
- Landmarks & Services:** The map identifies key locations like Chelsea Piers, Hudson Guild, and various public facilities.

The map uses a color-coded system to categorize different types of establishments, making it easy for visitors to find specific points of interest. A scale bar at the bottom left indicates distances in feet and meters.