

225 Broadway

The Transportation Building

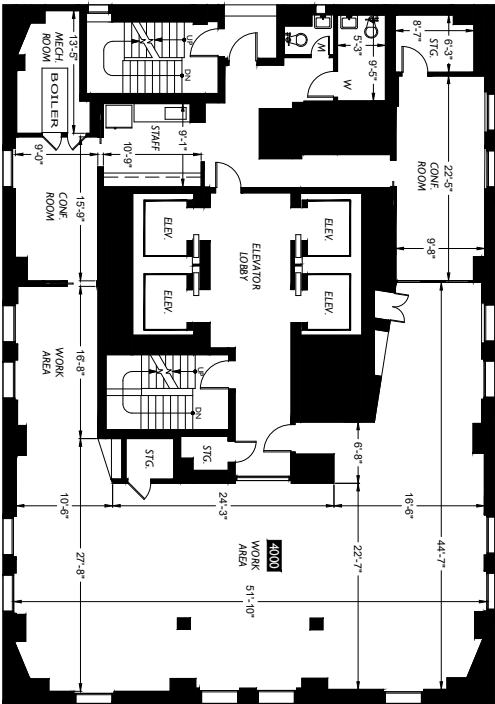
The very attractive building at 225 Broadway boasts a Renaissance Revival design, and where it is located is just as appealing. It sits adjacent to the Fulton Street Hub, is near City Hall and courts, and is located in a very popular and high-traffic area, perfect for any New York native. Enjoy nice views of City Hall and the Brooklyn Bridge as well as over the whole oculus. While it's chock full of old school charm, the building is equipped with a destination dispatch elevator allowing for a touchless and more efficient transportation experience.



40 Floor - Suite 4000
225 BROADWAY

Suite	Sq. Ft.	Monthly Electricity	Electricity
4000	4,050	\$1,181	3.50

ESCALATION: 3% Per Annum In Lieu of Operating Expense. R.E. Tax Pass Along



Barclay Street