

MIDTOWN SUBLEASE SPACE

240 West 35th Street, New York, NY 10001

FOR SUBLEASE:

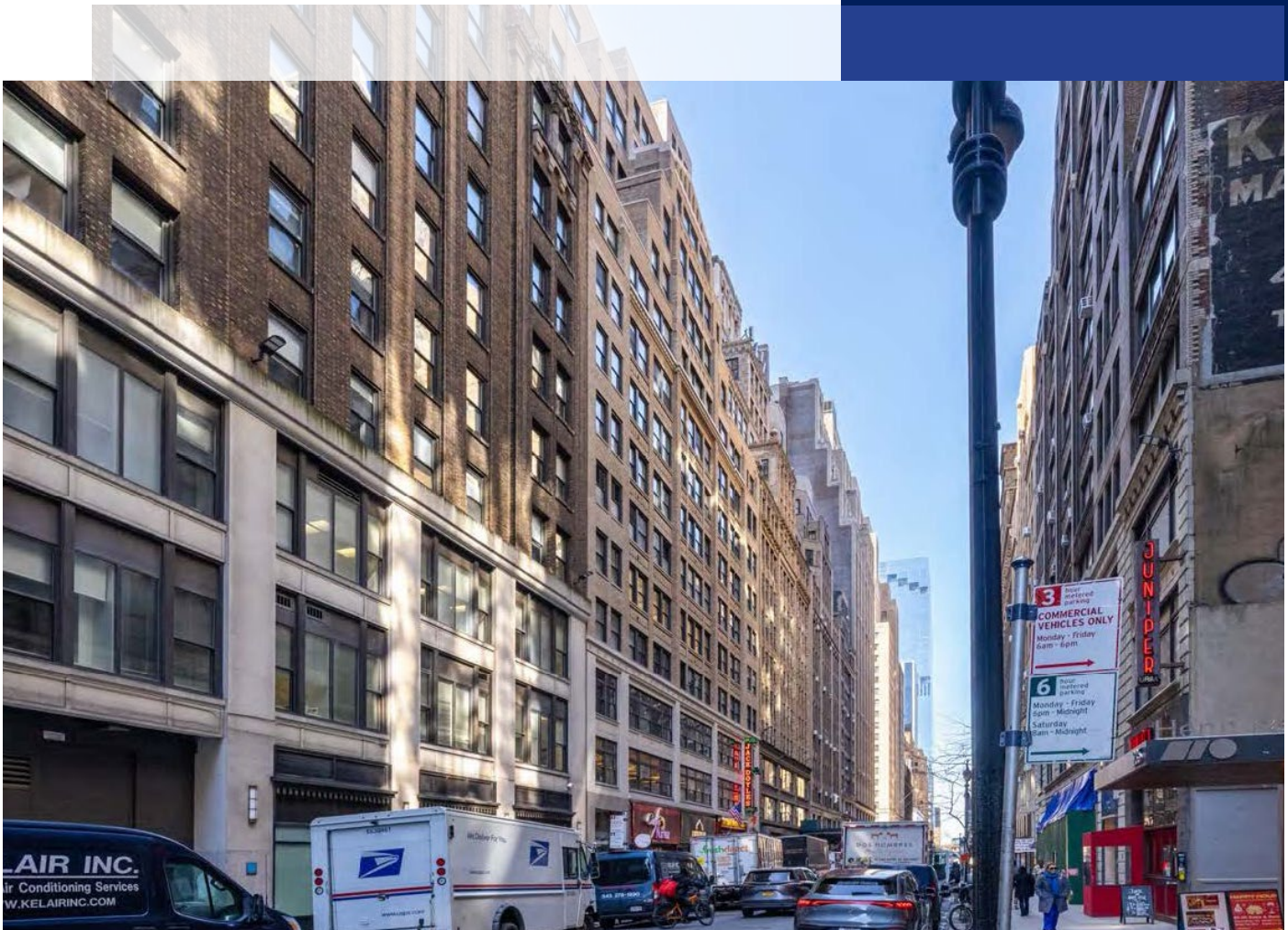
Floor: Partial 12th

Size: 4,100 SF

Asking Rent: Upon Request

Term: Through 10/31/2027

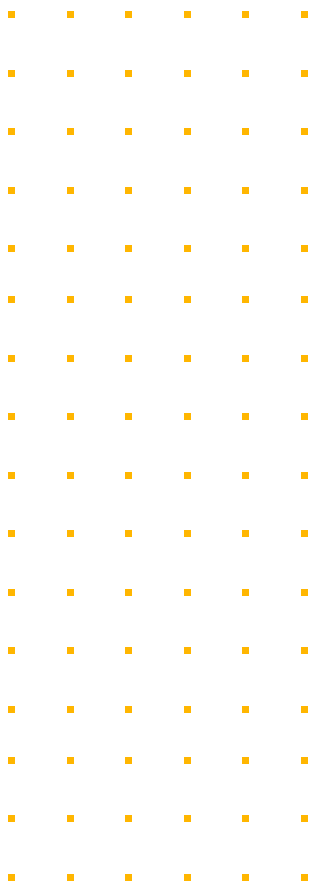
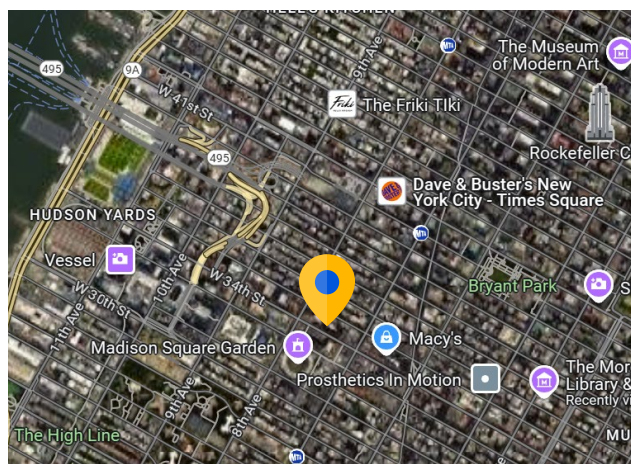
Possession: Immediate



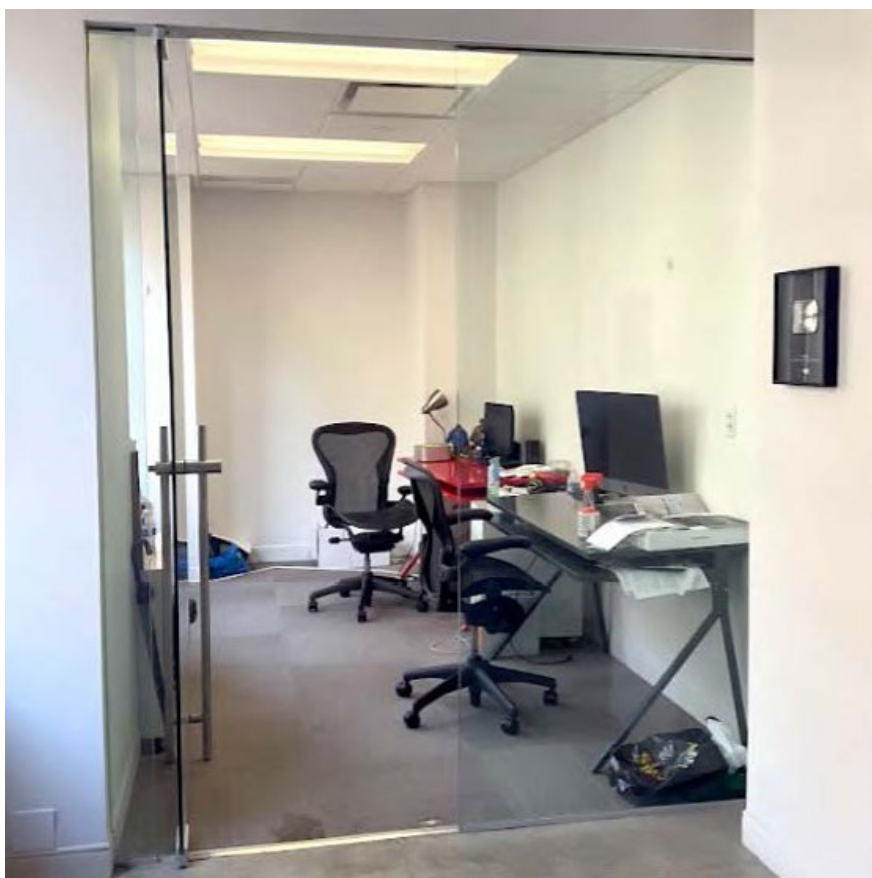
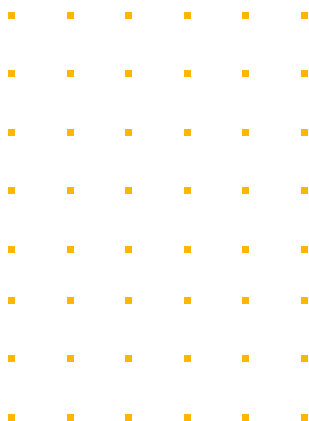
FOR SUBLEASE
240 West 35th Street

KEY HIGHLIGHTS

- Move-in condition
- One block to Penn Station

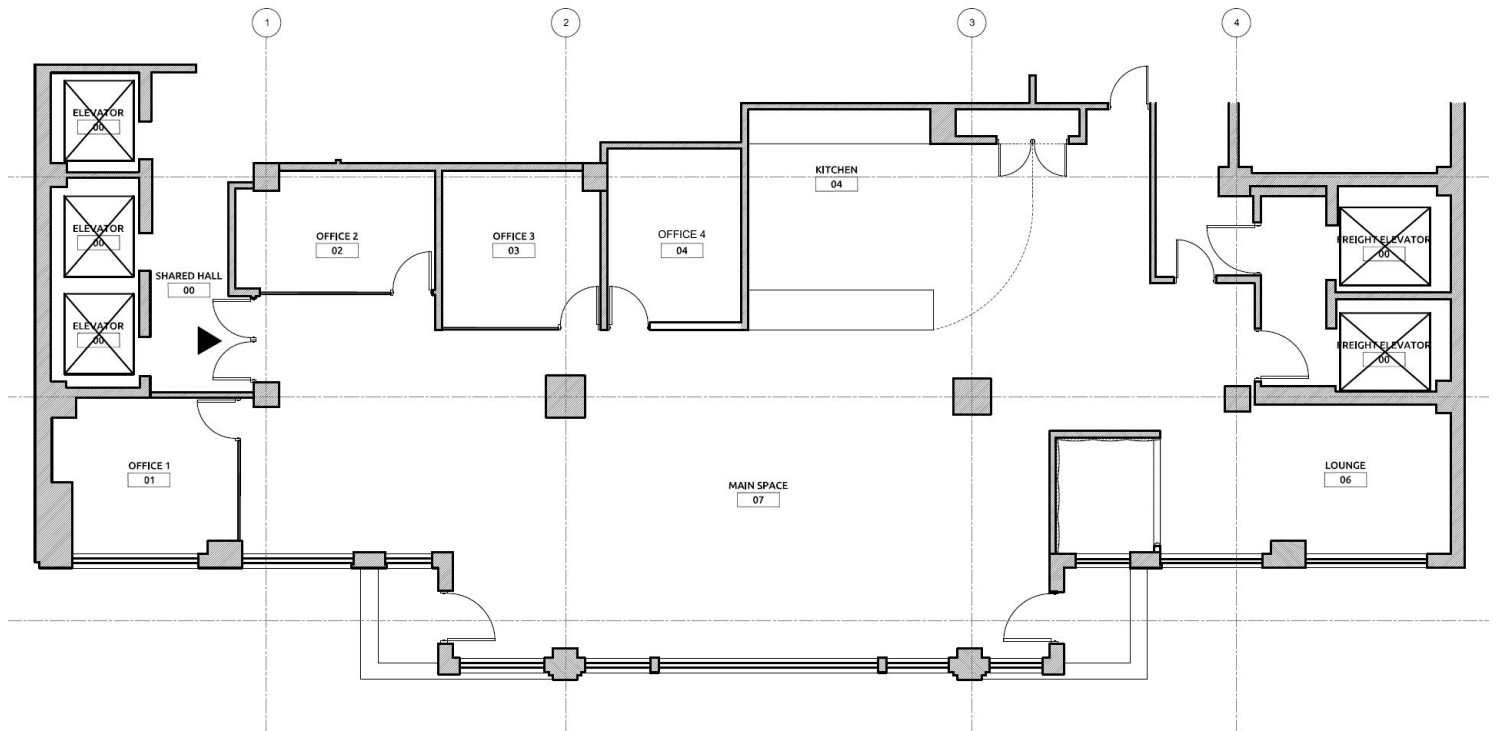


FOR SUBLEASE
240 West 35th Street



PARTIAL 12TH

4,100 RSF



SPACE OVERVIEW

- Mix of offices and open space
- 1 lounge area
- 1 pantry
- 2 useable terraces