

Bryant Park / Grand Central Sublease Opportunity

9 East 40th St



Entire 16th Floor

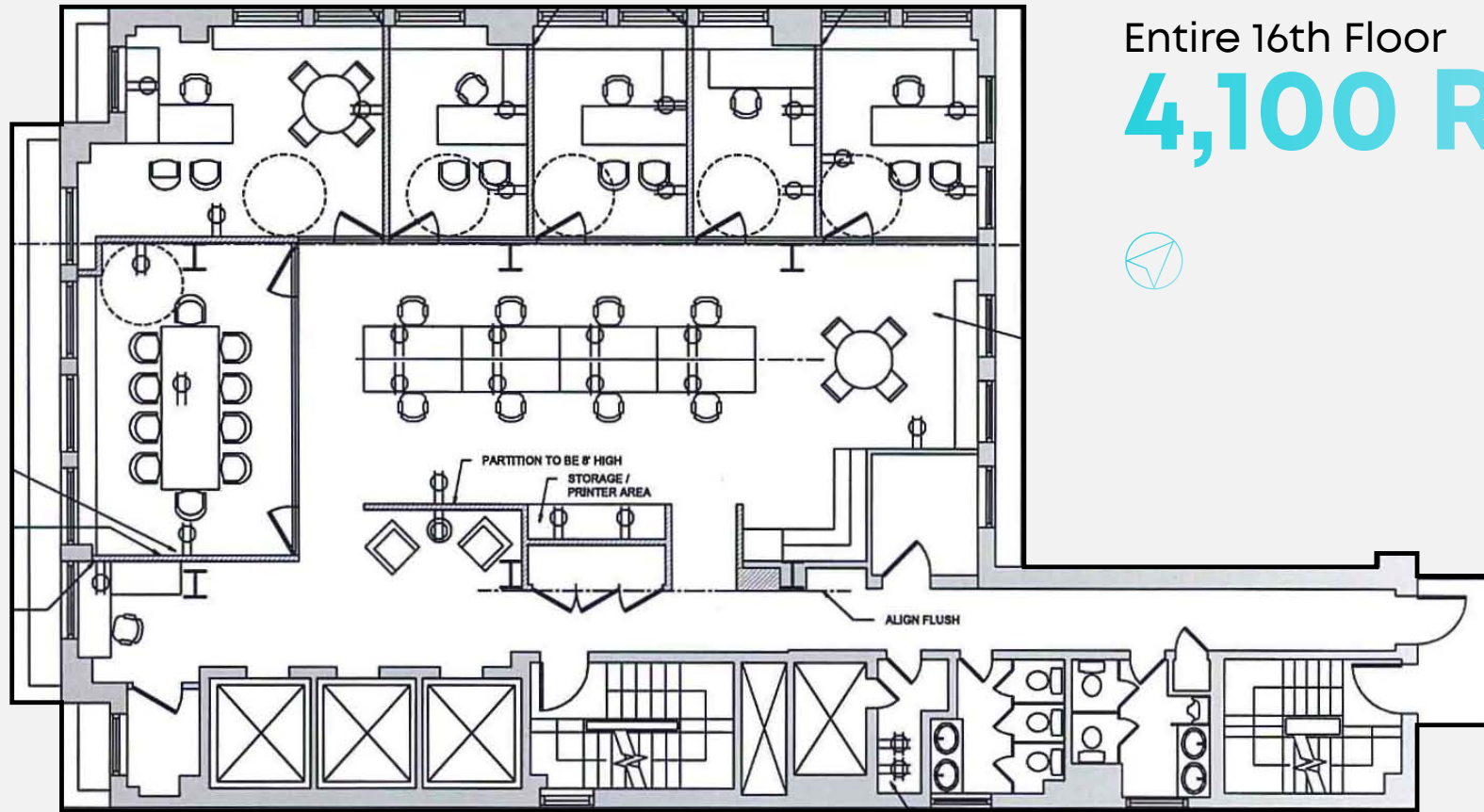
4,100 RSF

Term:
09/30/2026

Possession:
Immediate

- + Boutique, full floor opportunity
- + Recently built and fully furnished
- + Landlord will consider long term direct extension
- + Convenient to both Bryant Park and Grand Central Terminal
- + Wonderful light on 3 sides





Entire 16th Floor

4,100 RSF



9 East 40th St