

A modern office interior featuring walls made of vertical wood slats. The ceiling is white with exposed white pipes and wooden beams. The floor is a light blue carpet. In the background, there is a white door and a glass-walled room with two chairs. A green exit sign is visible in the distance.

30w22

BUILDING HIGHLIGHTS

Newly renovated, boutique building in prime location

Roof deck and in-building fitness amenities

Entire Building (21,000 RSF) Occupancy Opportunity

Unique 4,000 SF floor plates allow for branding

Reimagined landmarked lobby

Steps away from the PATH and multiple subway lines

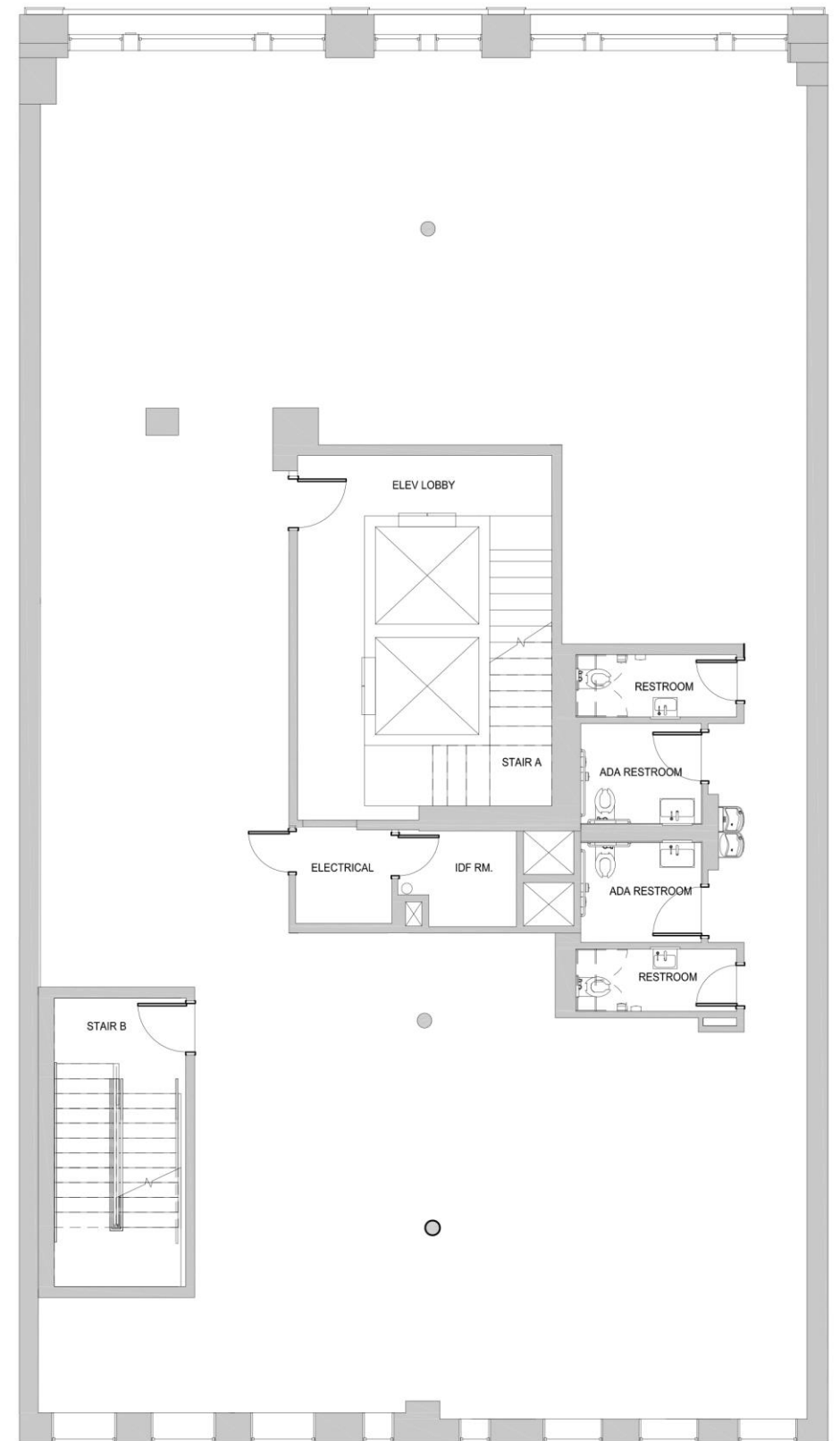
Tracking LEED Gold certification

Secure access



Core / Shell Plan

Second to Sixth Floors
4,160 RSF each





In the Neighborhood

Located in the Flatiron district and nestled in between Fifth and Sixth Avenue, 30W22 allows for an unparalleled experience. At the perfect intersection of live, work, and play, Flatiron is one of the most desirable Manhattan neighborhoods.

Steps from iconic destinations like Madison Square Park and the Flatiron Building, as well as some of the best shopping Manhattan has to offer, the city truly feels like it is at your fingertips.

30W22 is conveniently located in close distance to Penn Station, the 23rd Street PATH station, the LIRR, and seven subway lines, including the N, R, W, F, M, 1 and 6 lines.

Metro Access

- 1 minute walk to F, M Subway
- 1 minute walk to 23rd St Path Station
- 2 minute walk to N, R Subway
- 5 minute walk to 6 Subway
- 6 minute walk to 1 Subway
- 8 minute walk to A, C, E Subway
- 13 minutes train to Penn Station

Park Access

- 4 minute walk to Madison Square Park
- 8 minute walk to Union Square Park

Food and Beverage

- 2 minute walk to Ralph's Coffee
- 2 minute walk to Eataly
- 3 minute walk to Trader Joe's
- 8 minute walk to Whole foods

Fitness

- 2 minute walk to SoulCycle
- 5 minute walk to Equinox
- 5 minute walk to F45

