



270 MADISON

NEW OFFERING

TURN-KEY - PREBUILT - FURNISHED - OFFICE SPACE

SOLUTIONS FROM 2,000 - 7,000 RSF

WITHIN THE HEART OF THE TRANSIT TRIANGLE

Located where employees prefer to be, **between Bryant Park and Grand Central Terminal**. Walking distance to Penn Station and Port Authority. Close proximity to The New York Public Library.



Construction Underway, Move-In Ready, January 2025



All Spaces Offered Furnished With High Quality Finishes and Glass-Fronted Offices



Flexible Lease Terms, Minimum 1 Year



Private Space, Substantially Superior to Co-Working



Nonprofits May Qualify for a Real Estate Tax Exemption with a 30 YR Lease



Convenient Transit Triangle Location



Wired to Work



On-Site Leasing and Management Office

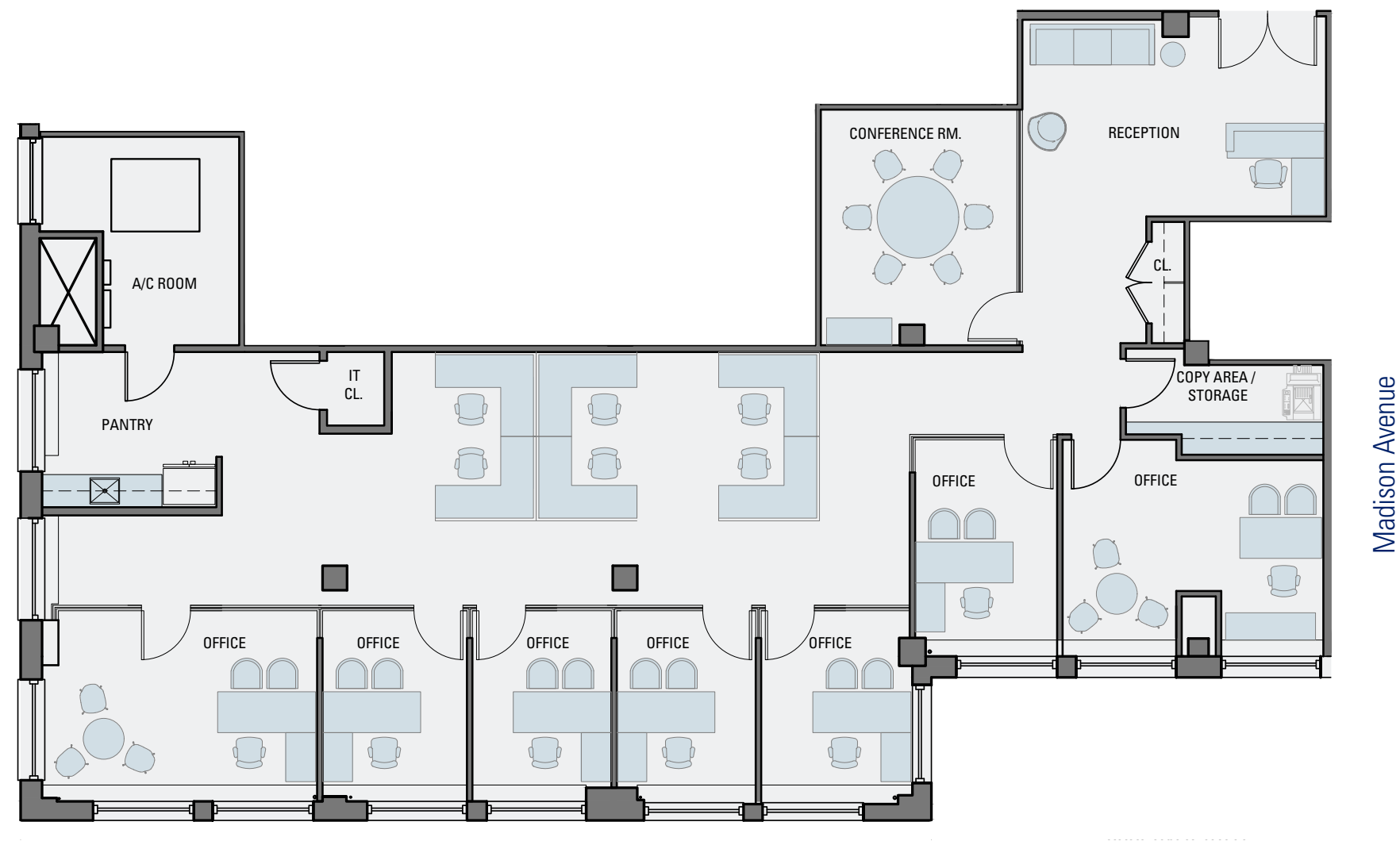


Building Owners and Agents Available On-Site



Full Commission Paid on Lease Signing

Suite 1805: 4,490 RSF



39th Street



Artist's Rendering for Illustration Purposes

PUBLIC & PRIVATE

Deep space allows for areas of privacy and collaboration in others



Artist's Rendering for Illustration Purposes

SURROUNDED BY LIGHT

An inspiring workplace day in and out





Walk to Grand Central Terminal



Blocks from Bryant Park



Moynihan Train Hall



Port Authority Bus Terminal



CitiBike Stations Nearby

