



164 WEST 25TH STREET 12TH FLOOR

BETWEEN 6TH & 7TH AVENUES

SKYLIGHT OFFICE SPACE IN CHELSEA



SIZE

4,500 SQ FT

ASKING RENT

\$13,500

POSSESSION

Immediate

TERM

Flexible

TOP FEATURES

- Ceiling Height - 11.5'
- Skylight
- Loft office space
- Direct sunlight
- Open Space
- 2 Bathrooms
- Direct Elevator Access
- Direct Freight Elevator
- Great City View
- Northern, southern and western exposure with unobstructed views of the freedom tower

TRANSPORTATION

A C E

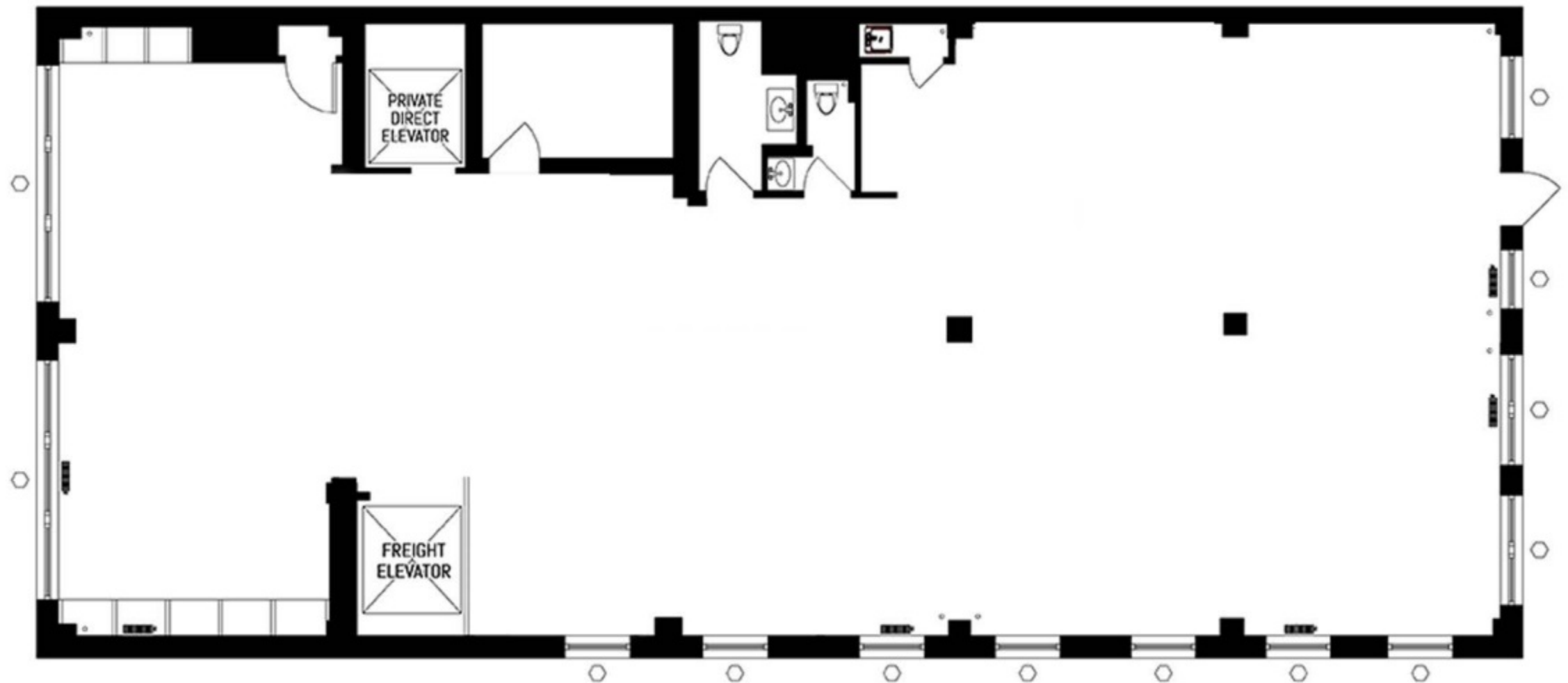
1 F M

164 WEST 25TH STREET 12TH FLOOR

BETWEEN 6TH & 7TH AVENUES

SKYLIGHT OFFICE SPACE IN CHELSEA

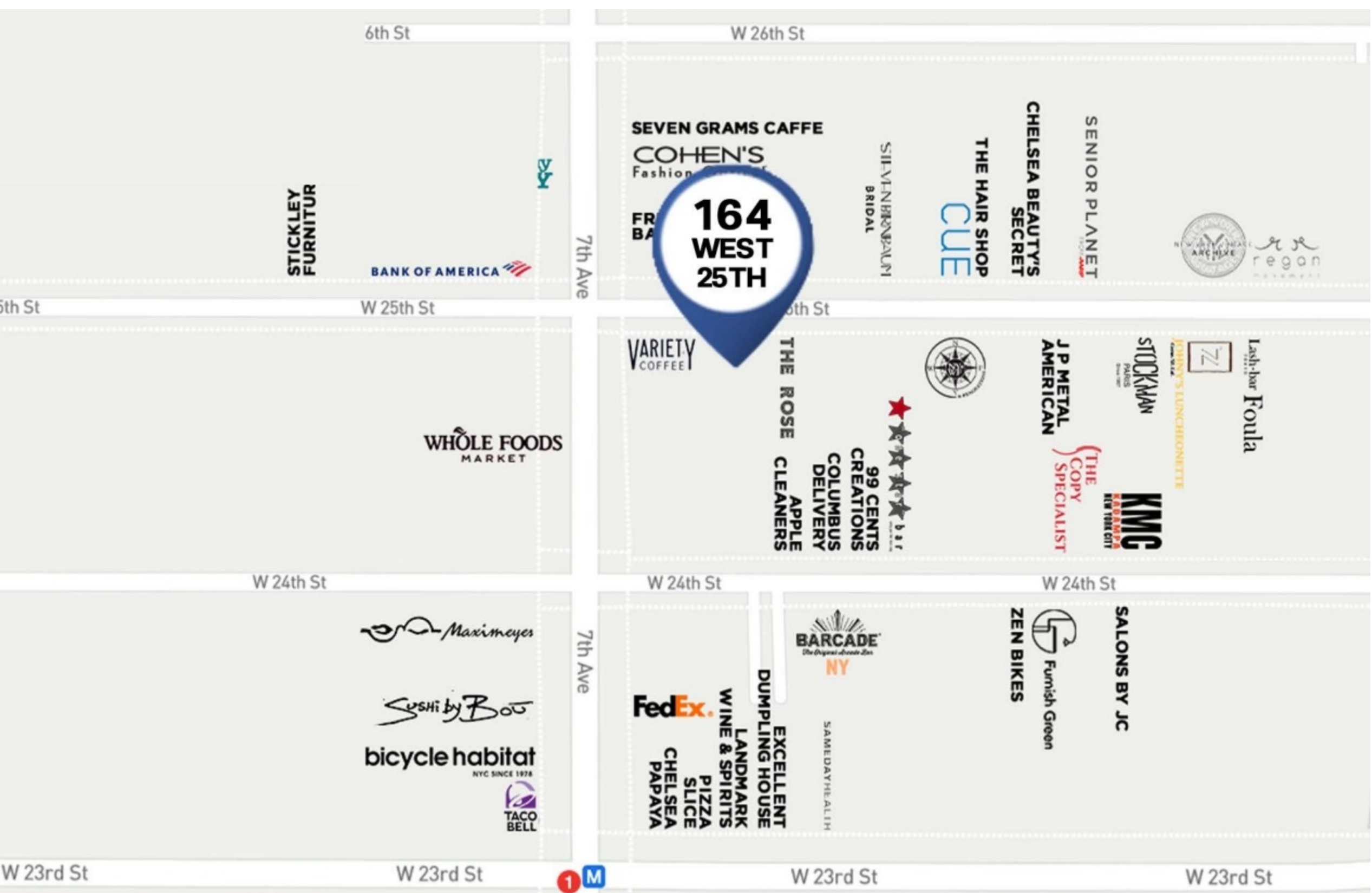
FLOOR PLAN



164 WEST 25TH STREET
12TH FLOOR

BETWEEN 6TH & 7TH AVENUES

SKYLIGHT OFFICE SPACE IN ONE OF THE



164 WEST 25TH STREET 12TH FLOOR

BETWEEN 6TH & 7TH AVENUES

SKYLIGHT OFFICE SPACE IN CHELSEA