

400 MADISON

FULL-FLOOR **PLUG & PLAY**
SUBLEASE OPPORTUNITY



ENTIRE 18TH 4,500 RSF

Possession

Immediate

Term

10/09/2028

Comments

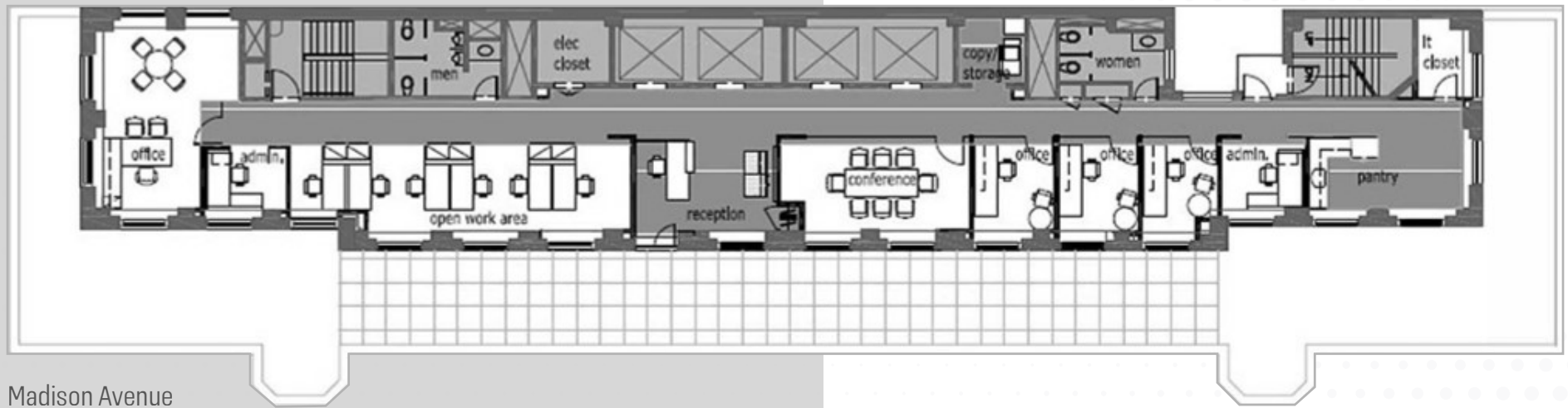
- + Recently built, full-floor plug & play opportunity
- + Installation consists of a dedicated reception area, 5 windowed offices, 1 meeting room, 1 (10-person) conference room, open area for 8-12 workstations, and a pantry
- + Full-floor private terrace
- + Finishes include polished concrete and carpeted floors, exposed and dropped ceilings, LED lights, and glass-fronts
- + Great natural light and views throughout
- + Fully furnished
- + Direct elevator access into space





400 MADISON

East 47th Street



Madison Avenue