

461 Park Avenue South

MIDTOWN SOUTH- ENTIRE 2ND FLOOR

ONE FULL FLOORS AVAILABLE FOR LEASE



**BRAND
NEW TO
THE
MARKET**



RENT:
Upon request



POSSESSION:
Immediate



ELECTRIC:
Direct



TERM:
Flexible

IDEAL FOR:

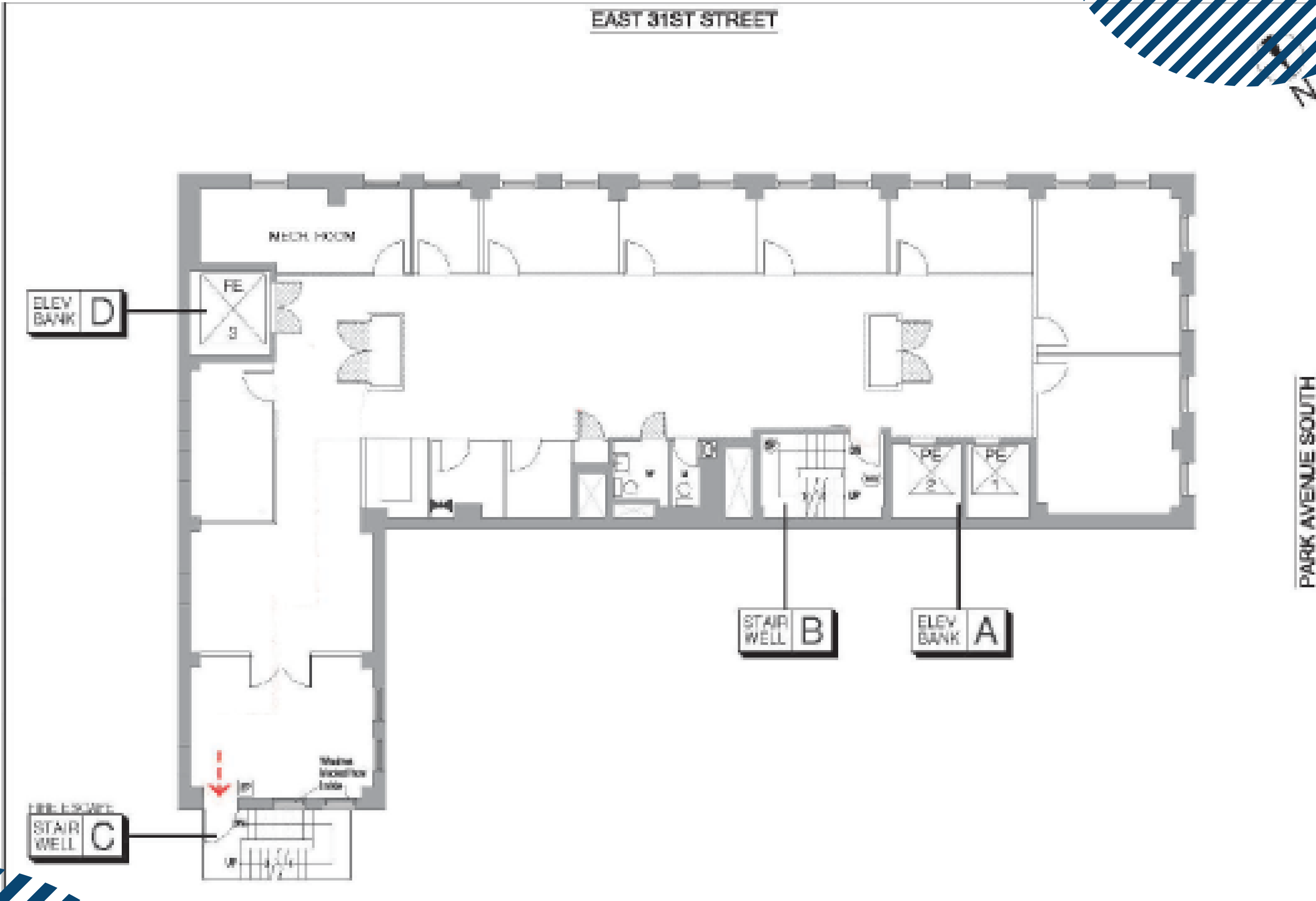
- MEDICAL
- LAW AND SALES OFFICES
- ACCOUNTING
- FINANCIAL SERVICES
- MARKETING AND ADVERTISING
- TECH AND DESIGN

- BOUTIQUE OFFICE/MEDICAL BUILDING STRADDLING MIDTOWN & MIDTOWN SOUTH
- CONVENIENTLY LOCATED BY THE LEXINGTON IRT #6 SUBWAY LINE AT 32ND STREET
- WALKING DISTANCE TO BOTH GRAND CENTRAL AND PENN STATION
- RENOVATED LOBBY AND ELEVATORS
- CONTROLLED VISITOR ACCESS + EGRESS
- GREAT BRANDING OPPORTUNITY IN A BOUTIQUE BUILDING WITH FULL FLOOR PRESENCE

HIGHLIGHTS:

- FULL FLOOR IDENTITY WITH DIRECT ACCESS OFF ELEVATOR
- LANDLORD WILL DELIVER EACH FLOOR DEMOLISHED, BROOM CLEAN, WITH NEW WINDOWS, AND A/C
 - 11' EXPOSED CEILINGS
 - BRAND NEW TENANT-CONTROLLED AC WITH ECONOMIZER CYCLE
 - RENOVATED ADA COMPLIANT PRIVATE RESTROOMS
 - NEW THERMAL PANE OPERABLE WINDOWS
- 2ND FLOOR IS A UNIQUE QUASI-RETAIL BRANDING OPPORTUNITY, WITH PICTURE WINDOWS FACING PARK AVENUE SOUTH AND EAST 31ST STREET

461 Park Ave South



PROPOSED LAYOUT 2nd Floor

4,775RSF

461 Park Ave South



PROPOSED BUILDOUT 2nd Floor

4,775RSF

461 Park Ave South



PROPOSED BUILDOUT
2nd Floor

4,775RSF

461 Park Ave South



PROPOSED BUILDOUT 2nd Floor

4,775RSF

461 Park Ave South

