

Office Sublease

900 Broadway, Partial 7th Floor
New York, NY 10003



4,800 rsf

creative plug & play sublease at 900 Broadway

Space highlights

- High-end, creative corner unit sublease with oversized windows overlooking Broadway and 20th Street
- Furniture can be made available for subtenant use

Availability

Partial 7th Floor | 4,800 RSF

Term

Through July 2029

Possession

Immediate

Rate

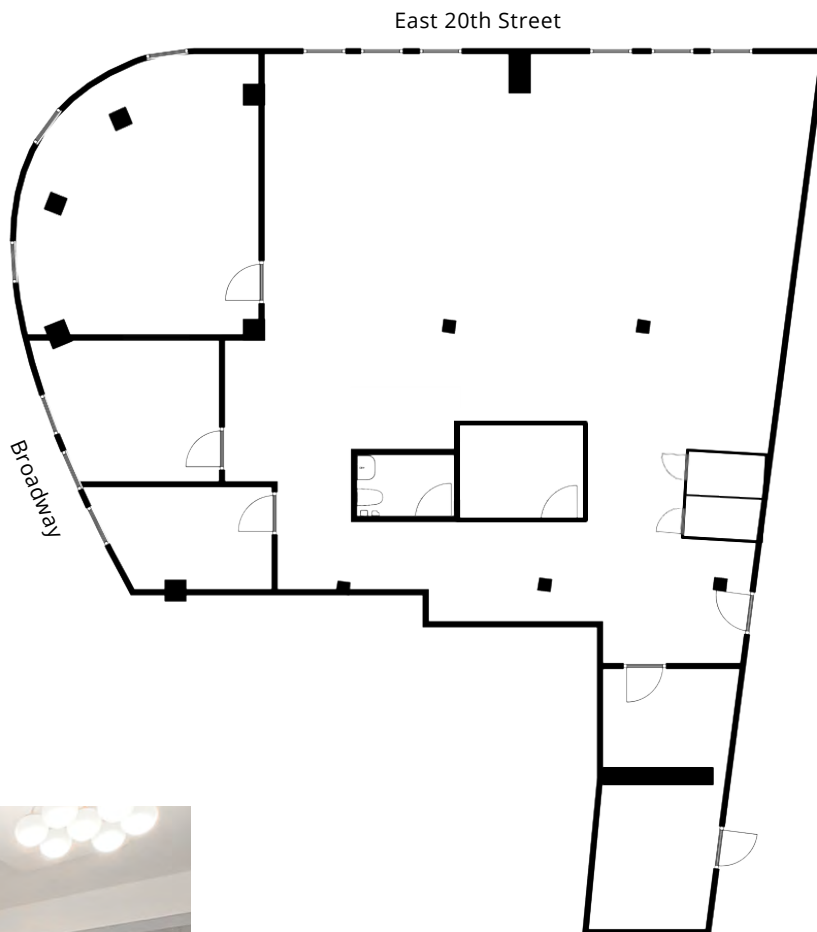
Upon request

Office Sublease

900 Broadway, Partial 7th Floor, New York, NY 10003

Partial 7th floor | 4,800 rsf

- Existing installation includes:
 - Large open area with 30 workstations (ability to further densify, 3 conference rooms, 2 meeting rooms, 2 phone booths, storage and several collaboration areas
 - Open café style wet pantry with bar seating, lounge and a private restroom within the premises
 - Abundant natural light with 13 oversized windows lining Broadway and 20th Street and 13'+ ceiling heights



Office Sublease

900 Broadway, Partial 7th Floor, New York, NY 10003

Additional images



Office Sublease

900 Broadway, Partial 7th Floor, New York, NY 10003

Building highlights

- Recently renovated entrance/ lobby with manned security desk
- Built in the Beaux-Art style featuring limestone and brick
- Common corridors and restrooms have been updated

Area highlights

- 3 blocks north of Union Square
- Located near the following:
4 5 6 F M L N Q R W PATH
and multiple Citi Bike docks
within a one-block radius

