

FOR SUBLEASE



One Grand Central Place

New York, NY 10165

Partial 8th Floor (Suite 860): 4,999 RSF

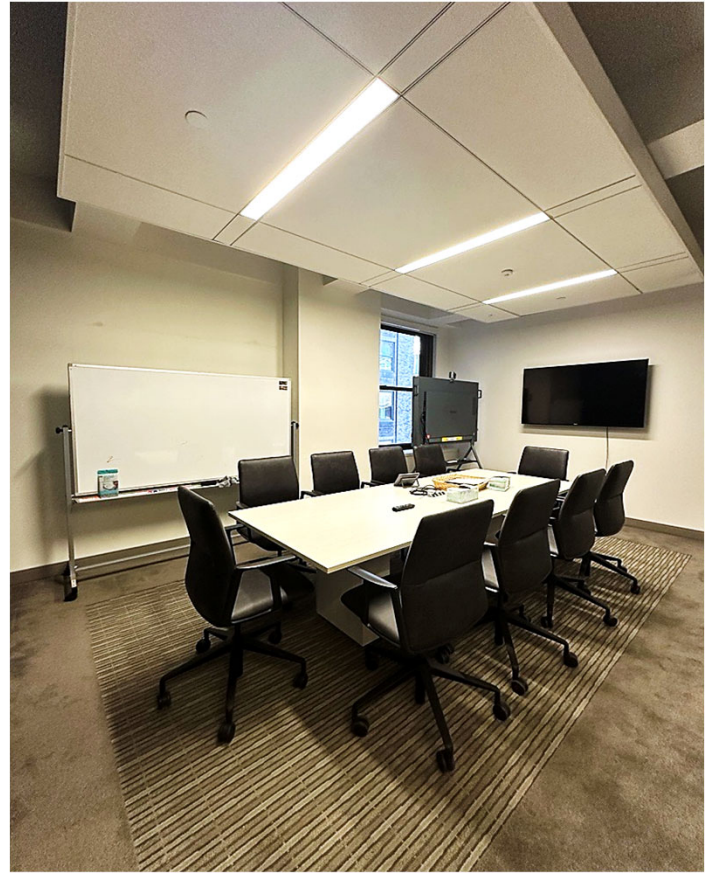
Term: thru 9/29/27

Possession: Immediate

60 East 42nd Street
New York, NY 10165

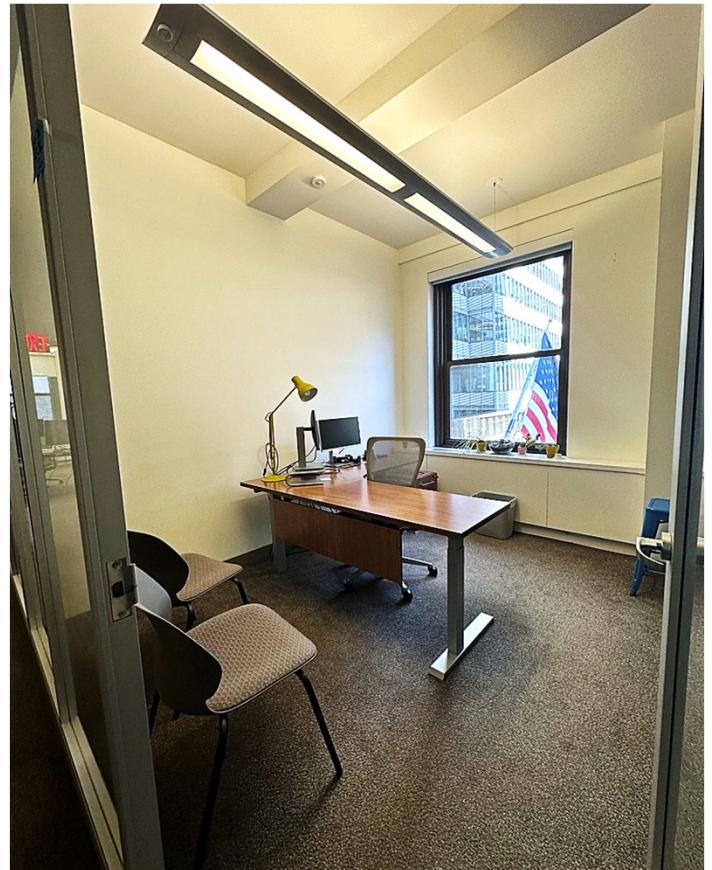
- Newly built and furnished space
- Short term sublease
- Steps away from Grand Central
- Move-in ready installation
- Tenant amenities include:
 - In-building food and beverage options
 - In-building access to Grand Central Terminal

SPACE PHOTOS



Space Features:

- 10 workstations
- 5 offices
- 1 large 10-person conference room
- 1 meeting room
- 1 pantry
- 1 large breakout area



FLOOR PLAN

