



For Sublease

420 Lexington Avenue *Graybar Building*

Premises: Partial 14th Floor: 13,722 - 41,910 RSF

Term: Through September 2030

Possession: Immediate

Rental: Upon Request

Space Features:

- Ability to lease entire premises or divisions of 13,722 & 28,138 RSF.
- Space is a built office intensive installation with multiple meeting/conference rooms and small open areas.
- Spaces come fully furnished.
- Access to Graybar 19 Conference Center.
- Direct access to Grand Central Station including the 4, 5, 6, 7, S trains & LIRR, within a 7-minute walk to the B, D, F & M trains.

For Sublease

420 Lexington Avenue | Partial 14th Floor

13,772 - 41,910 RSF

Option A (41,910 RSF)

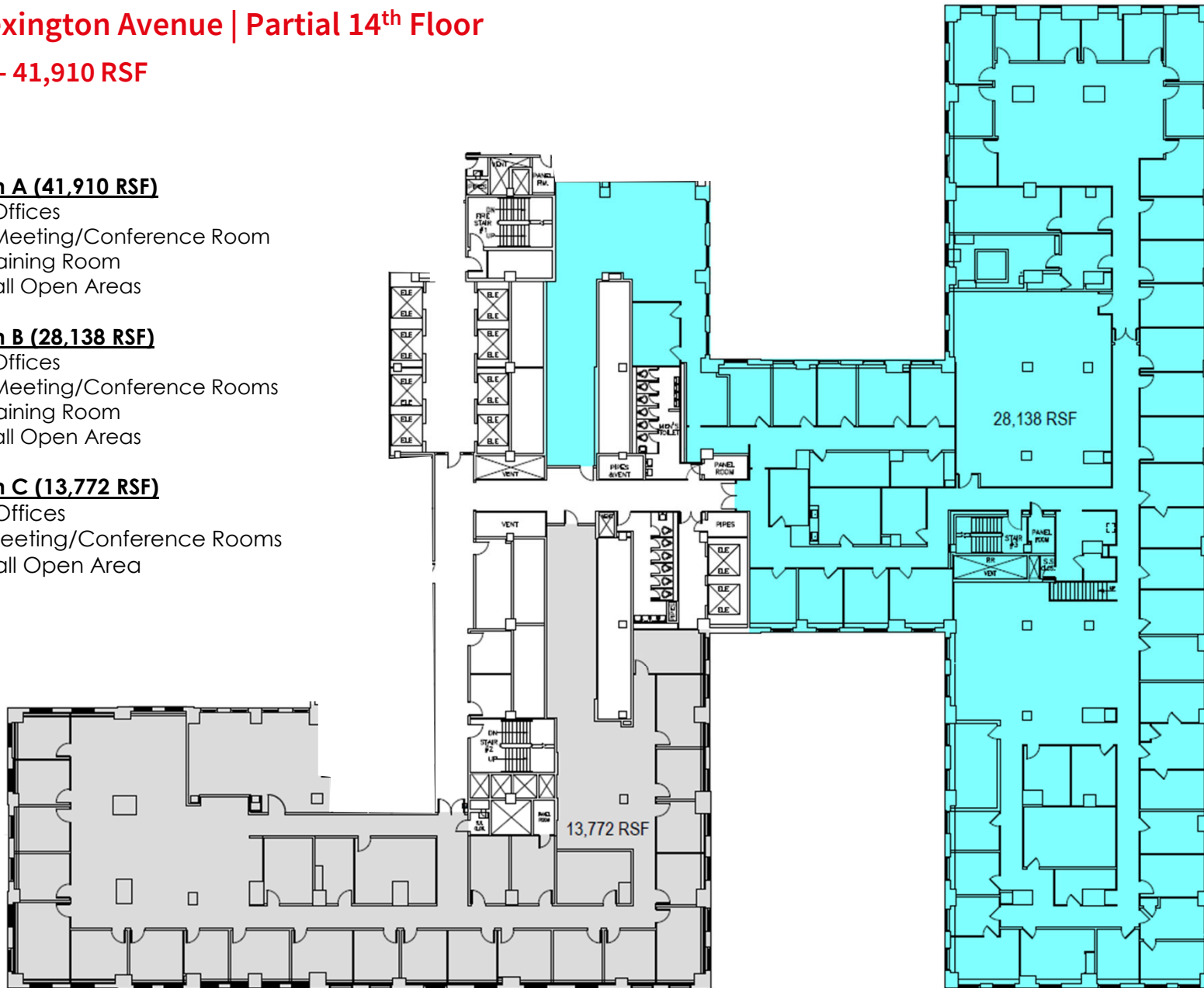
- 63 Offices
- 21 Meeting/Conference Room
- 1 Training Room
- Small Open Areas

Option B (28,138 RSF)

- 43 Offices
- 13 Meeting/Conference Rooms
- 1 Training Room
- Small Open Areas

Option C (13,772 RSF)

- 20 Offices
- 8 Meeting/Conference Rooms
- Small Open Area



For Sublease

420 Lexington Avenue | Interior Photos

