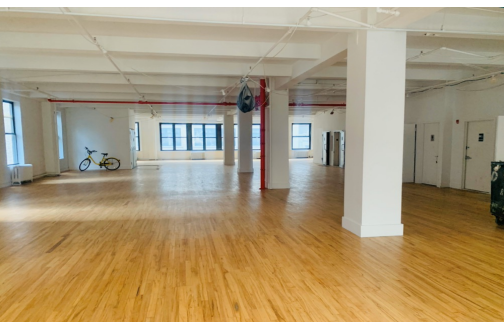
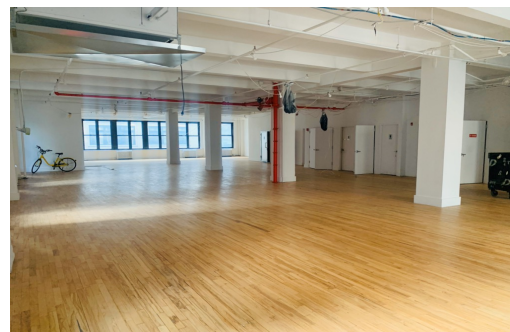


15 East 32nd Street

Between Fifth & Madison Avenues



Space Features

- **Floor:** Entire 11th
- **Size:** 5,000 SF
- **Possession:** Immediate
- **Rent:** Upon Request
- **Term:** 2-10 Years
- Hardwood floors throughout spaces
- Exposed ceilings w/heights 12-13 feet
- Landlord will build to suit

Building Features

- Full Floor Identity
- 24/7 Access - Attended Lobby during business hours
- Lobby modernization forthcoming
- Two new passenger elevator cabs
- Direct electric
- Multiple Internet/Telecom Providers
- Steps from NoMad/Murray Hill
- Centrally located between Bryant Park & Madison Square Park
- Convenient access to East/West subway/bus lines