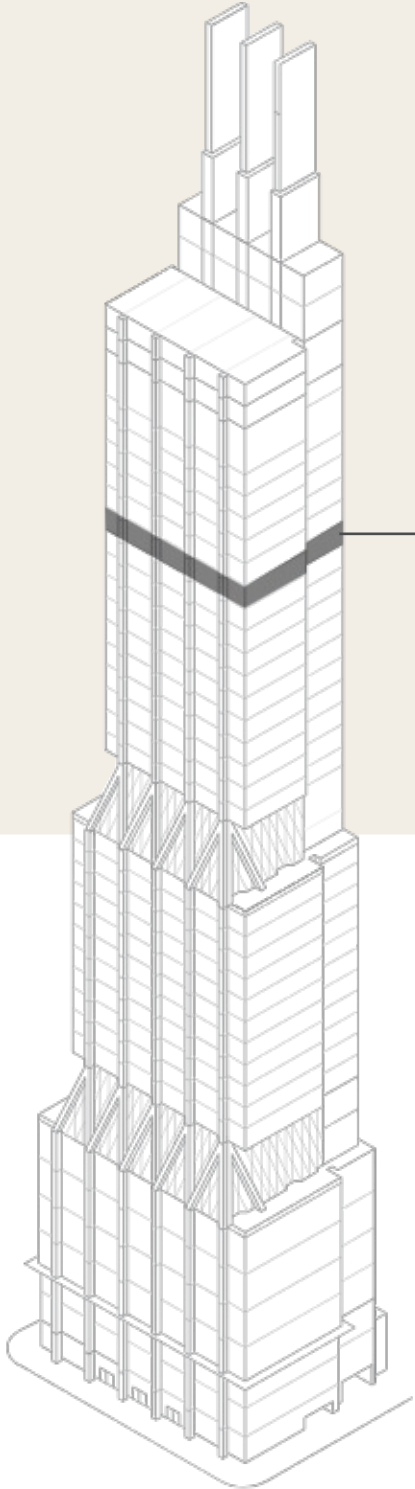




425
PARK AVENUE



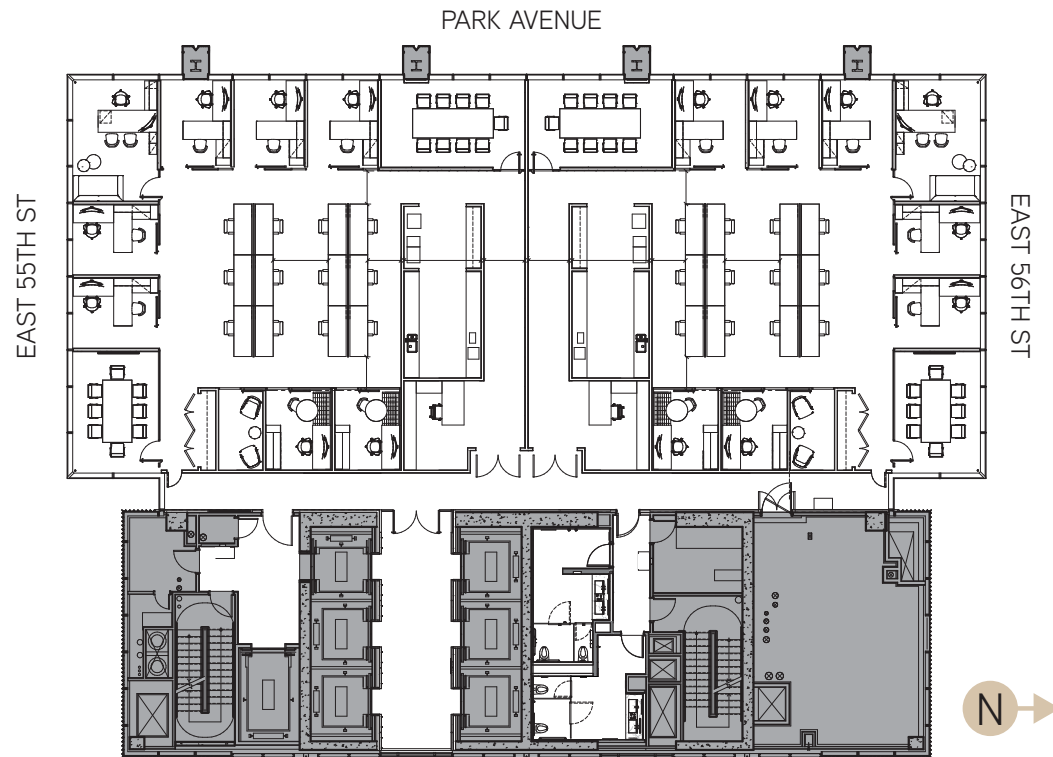
PARTIAL OR ENTIRE FLOOR OPPORTUNITY

FLOOR 38 | ~5,000-13,900 RSF

Possession: Immediate

Term: July 31, 2038

- Full floor to be delivered raw
- Sublandlord to turnkey partial floor
- Full floor branding opportunity
- Floor-to-ceiling windows
- 13'6" slab heights
- Column-free floors with soaring views of Midtown and Central Park
- First new construction on Park Avenue in 50+ years
- Private Garage
- Tenant Amenity Floor –The Diagrid Club
- WELL-certified building
- Excellent credit sublandlord



DELIVERED RAW







TENANT AMENITY FLOOR

THE DIAGRID CLUB



SOARING VIEWS OF MIDTOWN AND CENTRAL PARK

