



145
East 57th Street

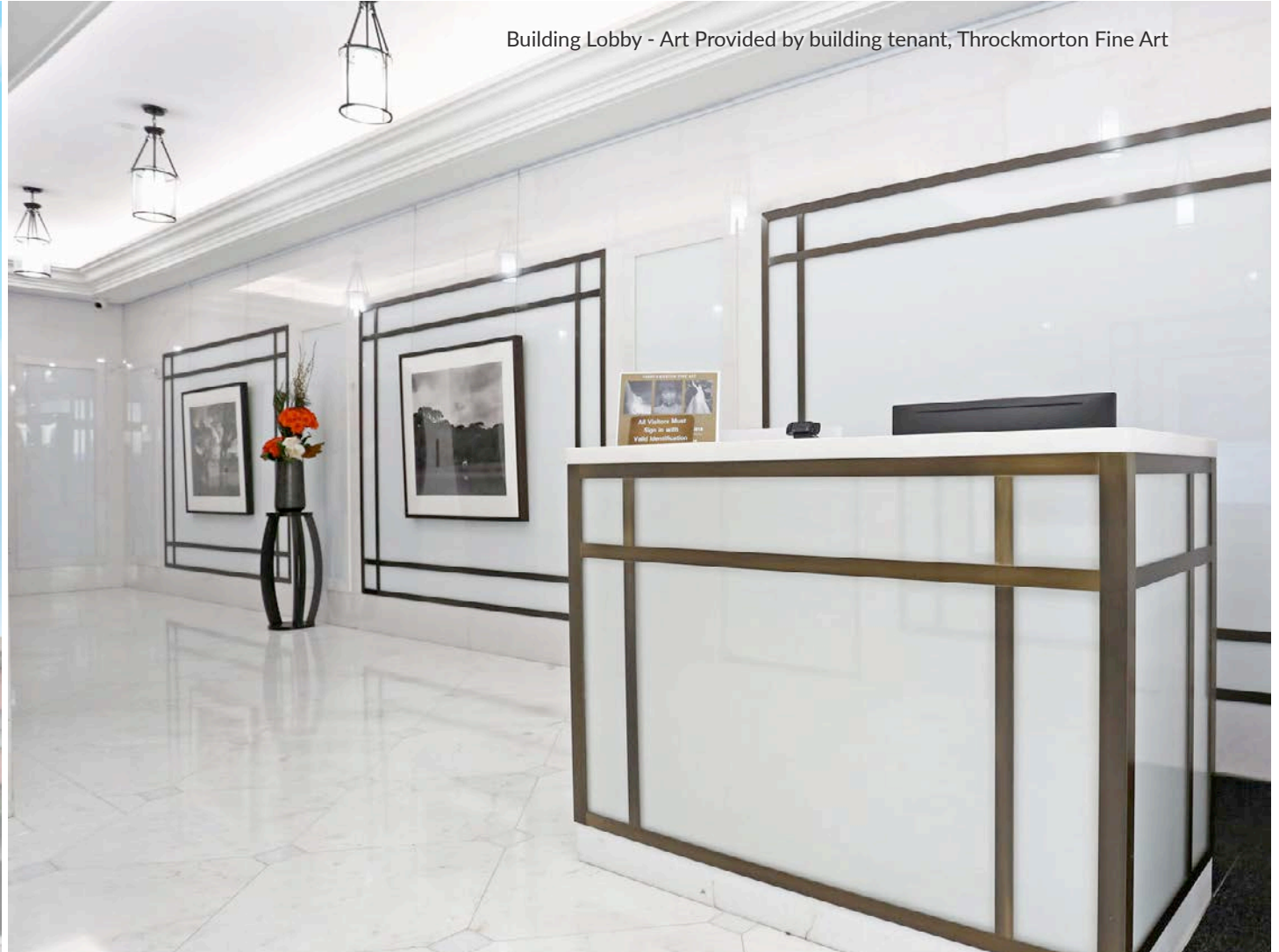
Building Standard Finish - 6th Floor Prebuilt

Final Remaining Floor for Lease

5,067 SF - Divisions Considered

Ideally Suited for Office & Showrooms

Flexible Lease Terms - Walk to Work - Furnishing Available - Surrounded by The Best of NYC

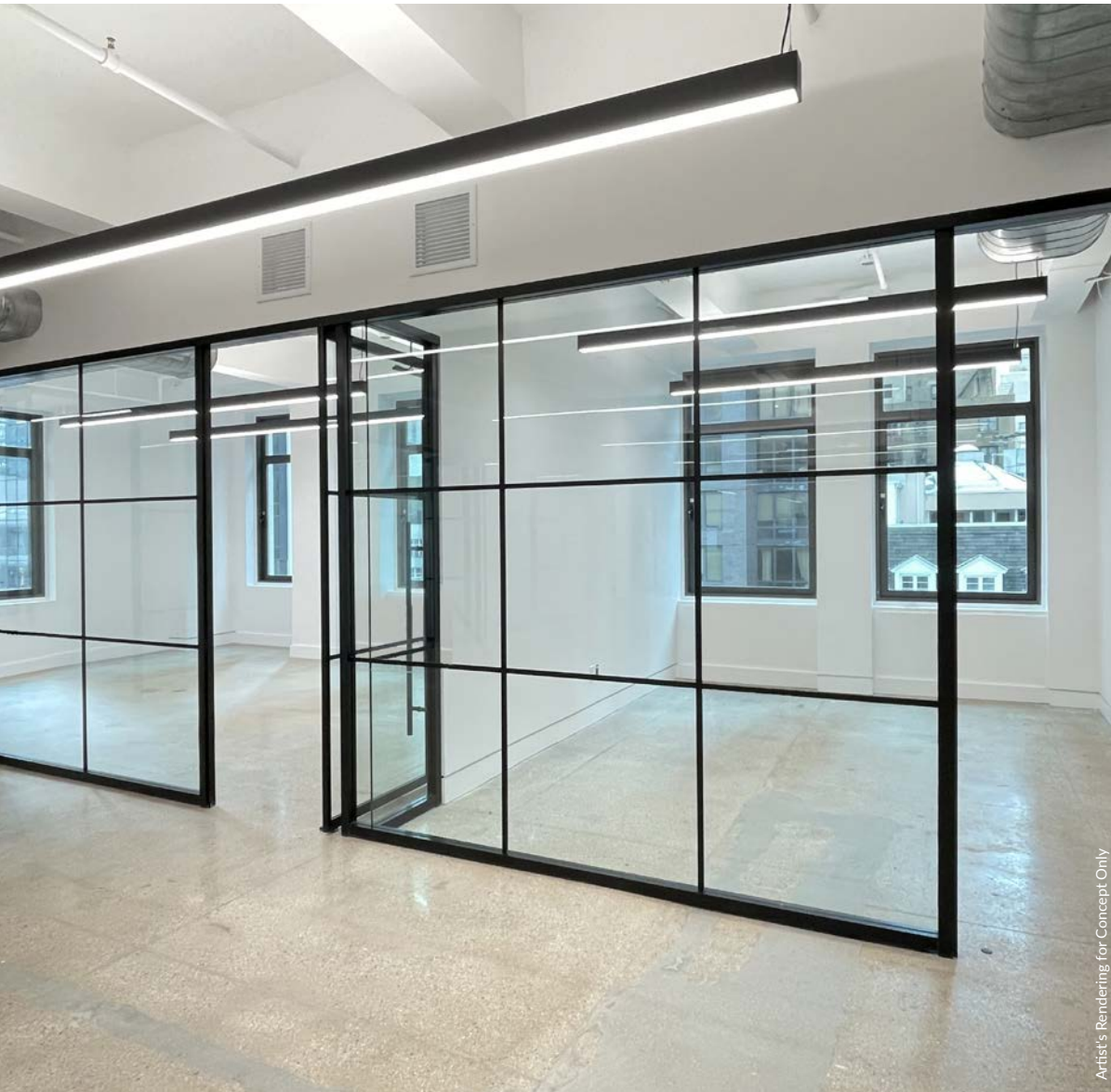


Newly Built Prebuilt Space

Potential Divided 6th Fl: 2,558 RSF / 1,201 RSF / 1,308 RSF

Entire 6th Fl: 5,067 RSF

Ideally suited for tenants seeking prebuilt move-in ready space. Located in the heart of the Plaza District, surrounded by best in class hotels, residential offerings and restaurants. The property boasts the ability to walk, bike, ride or drive to work. Join our newest showroom/retail tenant, Carl Hansen & Søn.



Artist's Rendering for Concept Only



Artist's Rendering for Concept Only



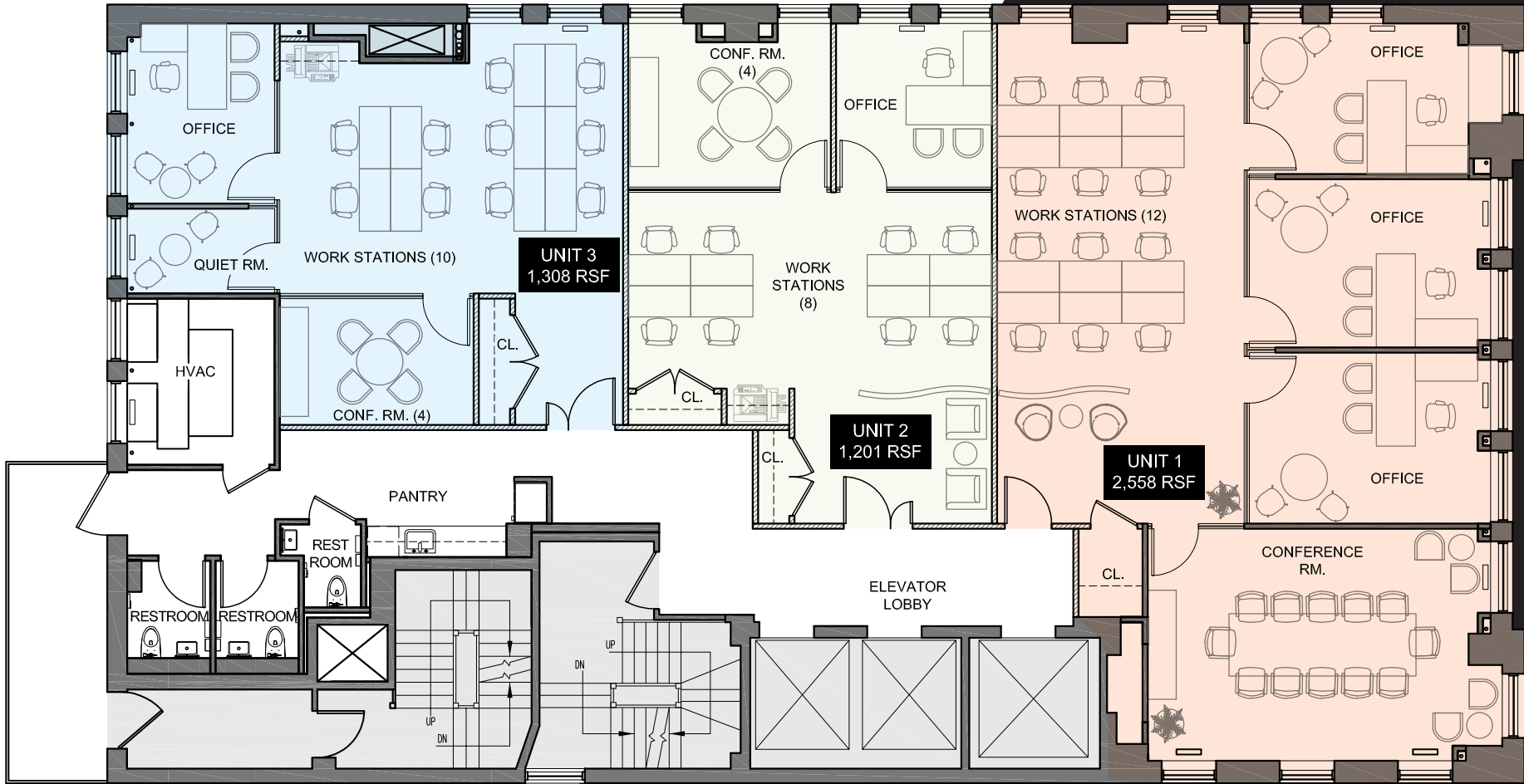
Artist's Rendering for Concept Only

- A Tremendous Value in The Plaza District
- Private Space w/ 24/7 Access
- Exclusive Tenant Roster
- Card Key Security System

- Operable Windows on 4 Sides
- Column Free w/ 12 ft Ceilings
- High Quality Finishes
- Possibility to Furnish

- Tenant Controlled HVAC
- Fiber Optic Infrastructure
- Stable Long-term Ownership
- Access to 4 5 6 N R W Subways

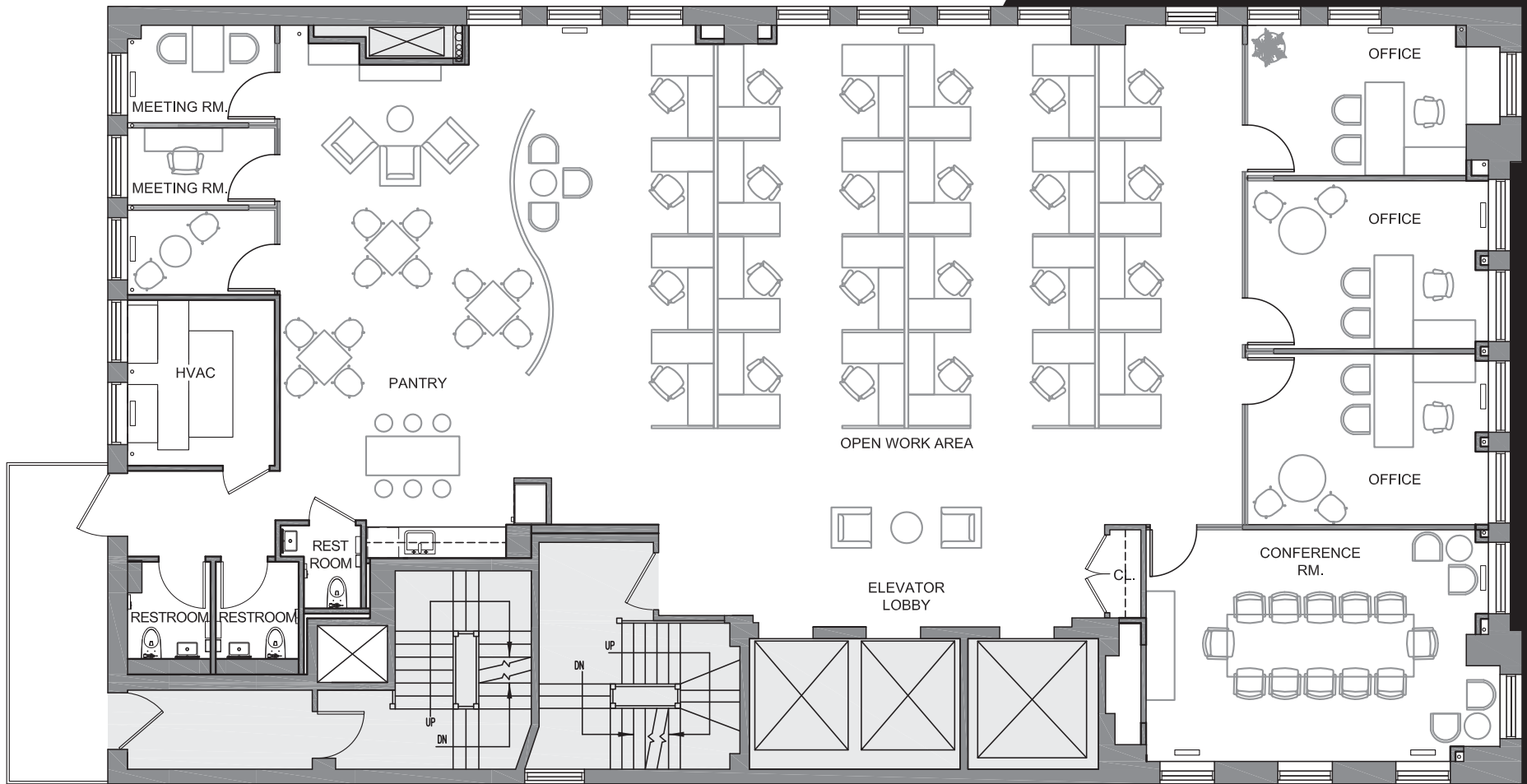
POTENTIAL 6TH FLOOR DIVISIONS



EAST 57TH STREET

57TH STREET

ENTIRE 6TH FLOOR - 5,067 RSF



57TH STREET





145
East 57th Street
Surrounded by The Best of NYC
Walk, Bike or Ride to Work





WALK BIKE RIDE DRIVE

Walk to work convenience from The Upper East Side, Midtown and The Plaza District. Close proximity to NYC's major transit hubs. Grand Central Terminal is a 10 minute subway ride away with access to Metro North Rail Road. In addition, Grand Central Madison, connects LIRR to the terminal for the first time in history and serves to further improve connectivity for the East Side of NYC.



Building Standard Finish - 6th Floor Prebuilt