

# 225

WEST 35TH STREET

**Partial 6th Floor: 5,350 SF**

**Divisible to 3,450 SF + 1,900 SF**

## SPACE FEATURES

Wall of windows facing front/south

24/7 Tenant-controlled central air

Polished concrete floors, exposed ceilings + oval ductwork

Built w/ 5 glass offices/conference rooms + pantry

Landlord will build to meet tenant's needs

Double glass entry doors

Two private bathrooms

## BUILDING FEATURES

Renovated, attended white marble lobby

3 newly redesigned passenger elevators

2 fully automatic, very large, freight elevators

Wired for Pilot Fiber, Verizon FiOS, Spectrum

Owner occupied building

## NEARBY TRAINS

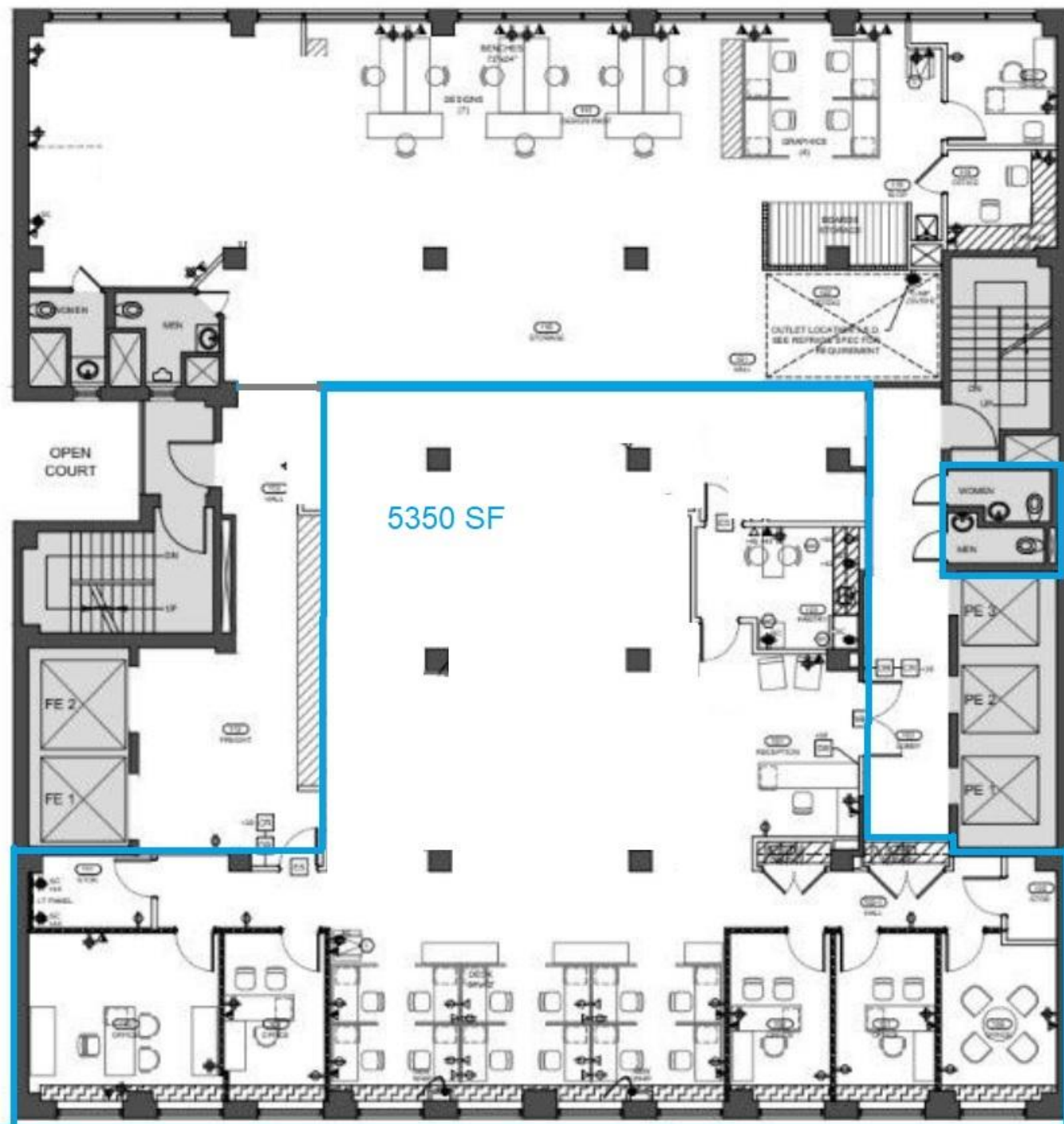
1 2 3 A C E B D F M N Q R W

MTA Long Island Rail Road

N

PATH











South-facing windows



Open Area



Office



Reception

