

145 West 28th STREET NEW YORK CITY, NY
5,432 RSF AVAILABLE

145 West 28th Street



PLUG & PLAY SUBLEASE OPPORTUNITY



Newly renovated lobby



Fully furnished and wired creative space
with hardwood floors and exposed
ceilings



Centrally located between Chelsea,
Flatiron and the newly developed Penn
Plaza District



Unparalleled access to transportation with
multiple subway lines within blocks of the
building - including the 1, 2, 3, Q, N, R, W
& Penn Station & Moynihan Train Hall



Term Through December 2026



Entire 11th Floor – 5,432 RSF

2

Conference Rooms

6

Breakout Rooms /
Offices

2

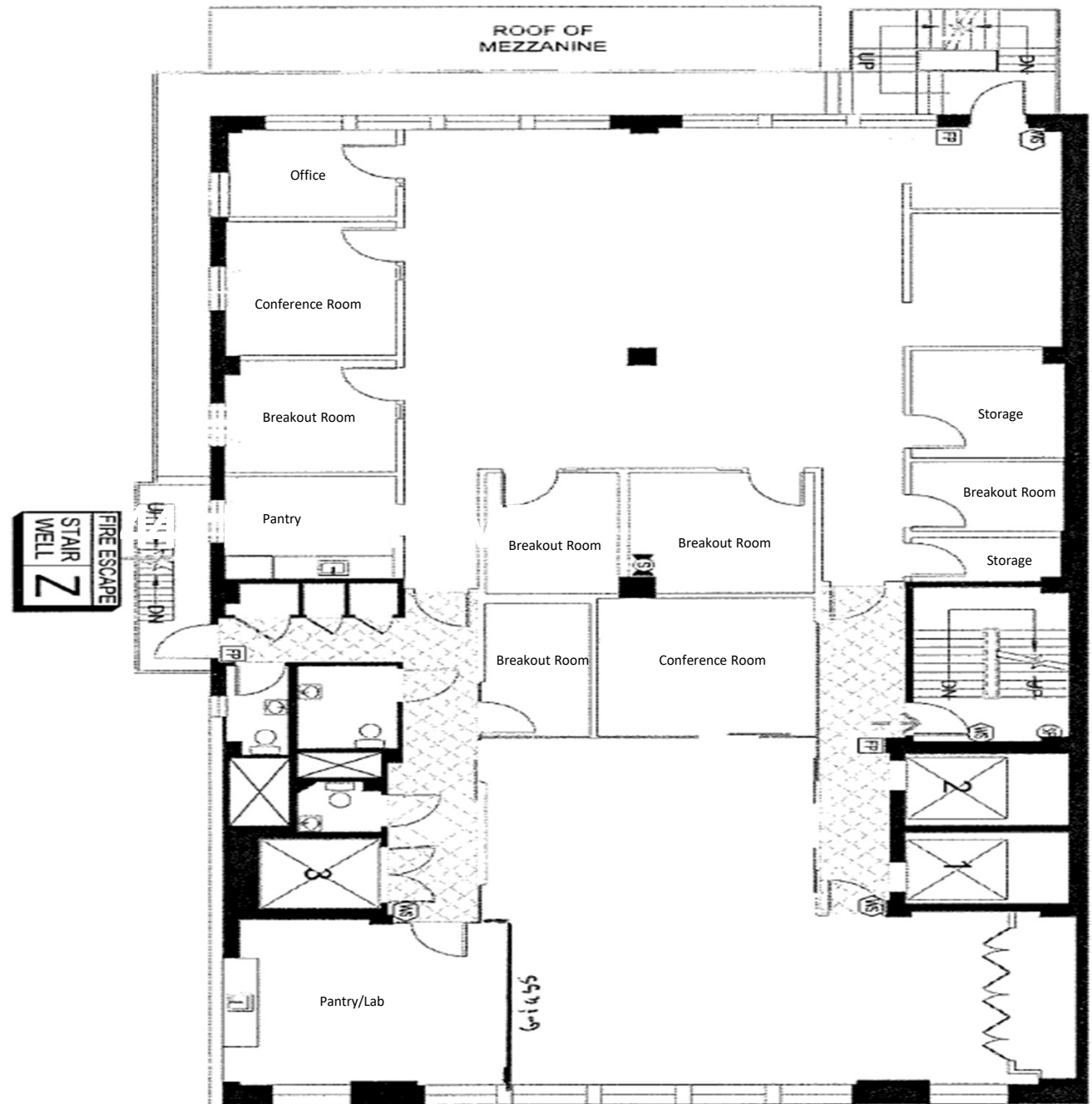
Kitchen / Pantry
areas

43

Workstations

2

Phone Booths



Term Through
December 2026

145 West 28th Street



145 WEST 28th STREET

