

The logo features the number '575' in a large, white, stylized font with a double-line outline. The '5' on the left and the '5' on the right are rounded, while the '7' in the middle is more angular. The '575' is enclosed within a thin, brown rectangular border. Below the number, the words 'MADISON AVE' are written in a clean, white, sans-serif font.

575
MADISON AVE

REDISCOVER 575 MADISON AVE FROM THE INSIDE OUT

LOCATION RENOVATION VALUE

Situated on the corner of **57TH STREET, ON A DOUBLE-WIDE AVENUE** and steps to Central Park, **575 MADISON AVE** recently completed a stunning lobby renovation that is both inviting and bold—showcasing a unique application of materials with a vibrant rotating art gallery. In addition, ownership is constructing a **TENANT-EXCLUSIVE AMENITY CENTER** on the top floor that will feature conferencing and lounge space with an outdoor terrace.

The **ELEVATED TENANT EXPERIENCE** you feel the moment you step inside the building, coupled with the **SIGNIFICANT VALUE** in one of the **MOST STYLISH NYC NEIGHBORHOODS**, warrants a fresh look at this matchless opportunity.



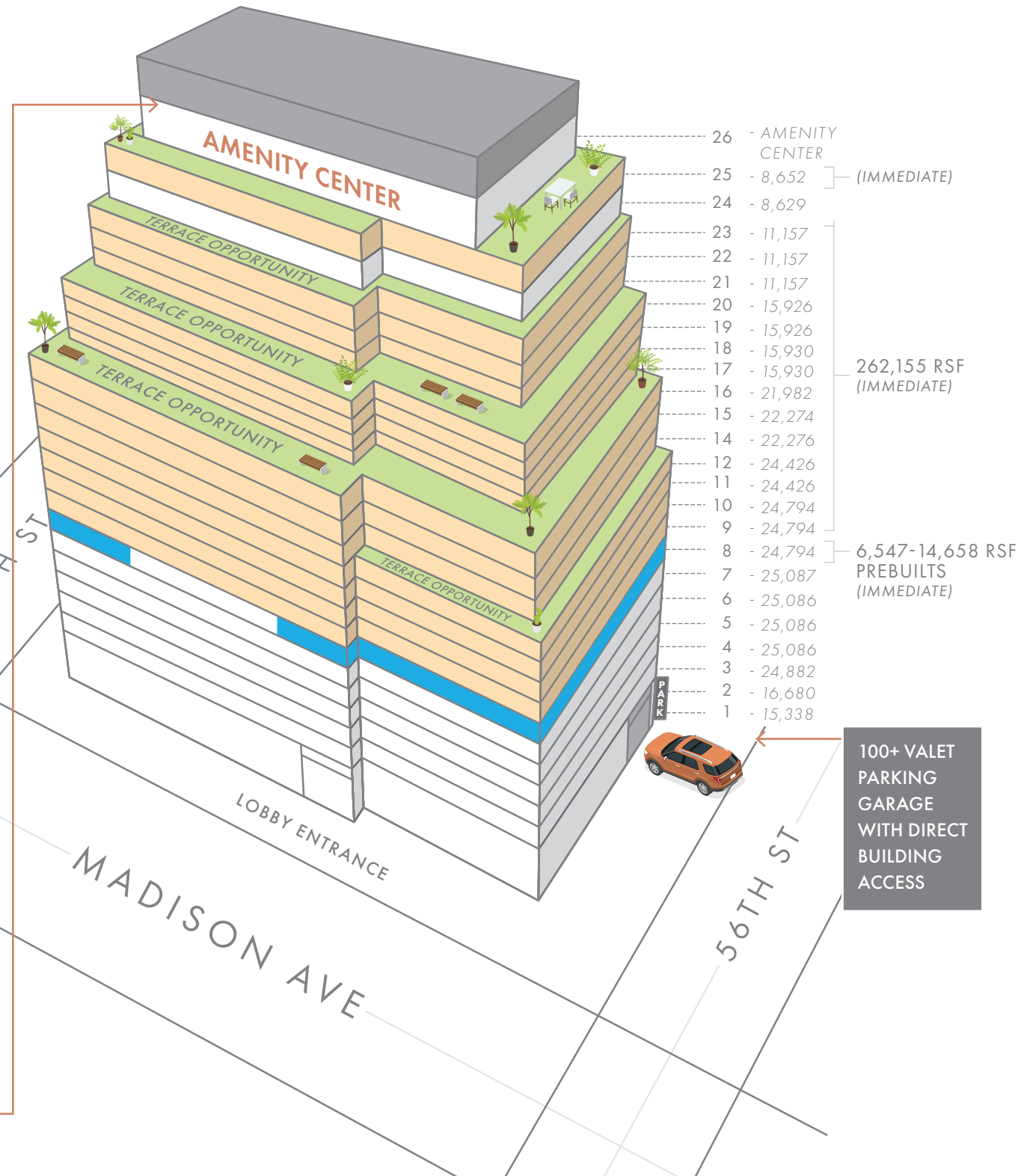
50,000 - 300,000 SF

OF CONTIGUOUS SPACE AVAILABLE NOW

LARGE BLOCK + PRE-BUILTS AVAILABLE

- FLOORS 9-23: 262,155 RSF (IMMEDIATE)
- 8TH FLOOR PRE-BUILT: 14,658 RSF (IMMEDIATE)
- 8TH FLOOR PRE-BUILT: 6,547 RSF (DELIVERING Q4 2022)

 [Click for Pre-Built Virtual Tour](#)



THE NEWLY DESIGNED LOBBY

BLENDS MATERIALS & TONES TO BRIGHTEN AND ACTIVATE THE SPACE.
LOCAL & EMERGING ARTISTS ARE FEATURED THROUGHOUT.



THE PENTHOUSE AMENITY CENTER

OFFERS TENANTS EXCLUSIVE CONFERENCING
AND LOUNGE SPACE, WHICH FEATURES AN OUTDOOR TERRACE.

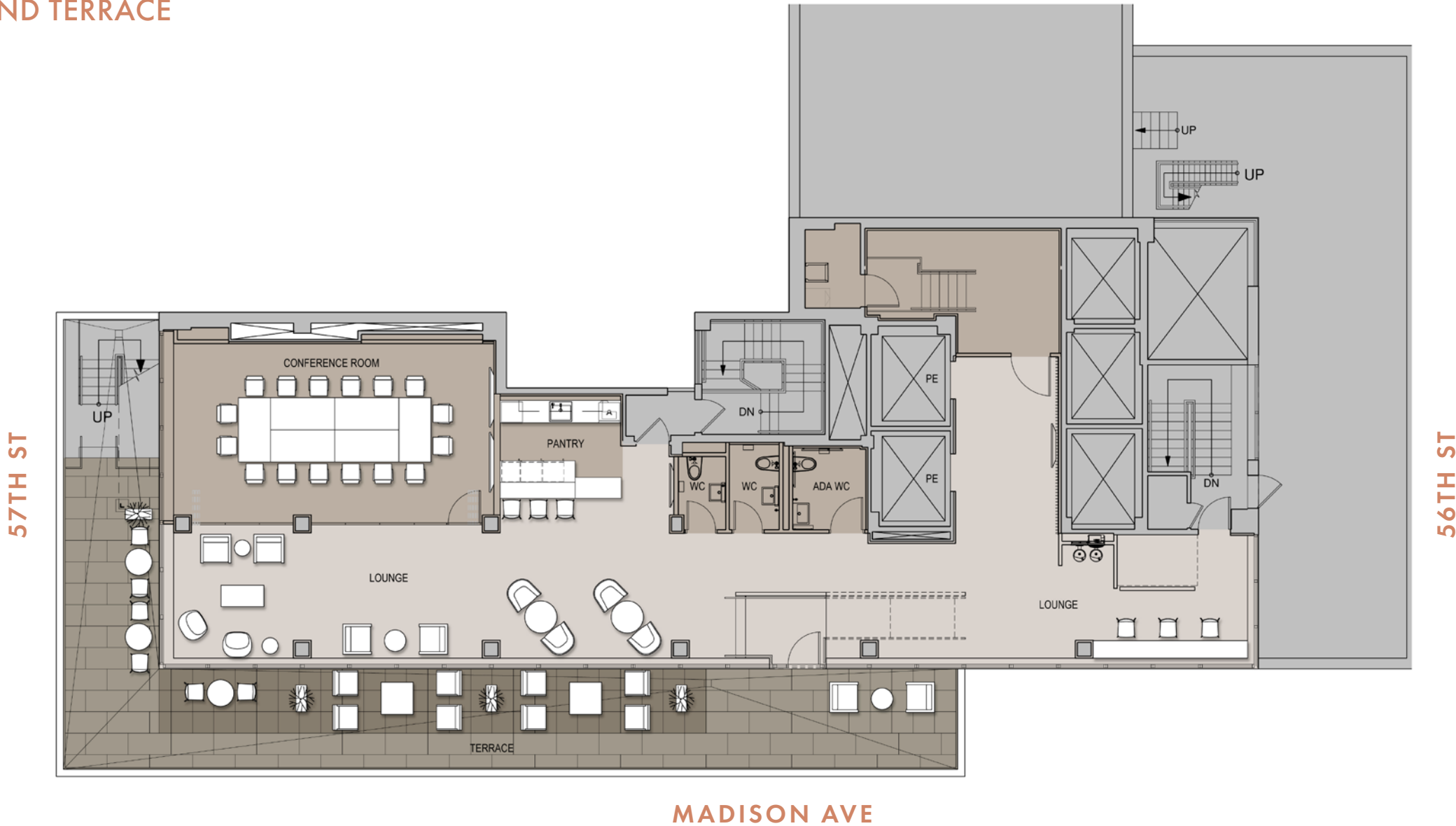




PENTHOUSE AMENITY CENTER + TERRACE

PENTHOUSE AMENITY CENTER PLAN

CONFERENCE ROOM, PANTRY, LOUNGE SPACE, + WRAPAROUND TERRACE



575 IS MOVE-IN READY

RECENTLY COMPLETED 8TH FLOOR PRE-BUILT



RECEPTION AREA

FUNCTIONAL ≠ LIGHT-FILLED AREAS



THOUGHTFULLY DESIGNED WORK AREAS





DEDICATED PANTRY + SOCIAL SPACE

NUMEROUS PRIVATE TERRACE OPPORTUNITIES
THROUGHOUT THE BUILDING



PRIVATE TENANT TERRACE - 17TH FLOOR

8TH FLOOR PRE-BUILT

SUITE A

PERSONNEL		PLAN	
SPACE TYPE			
Private Office	5		
Workstation	24		
Receptionist	1		
Total	30		
Office : Workstation	17% 83%		

COLLABORATION		PLAN	
SPACE TYPE	SEATS	SPACE	SEATS
Conference	14	1	14
Conference	8	1	8
Phone Room	2	1	1
Café [Open]	5	1	5
Total	4	4	28
Collaborative Seats/Person:	0.93/Person		

SUITE C

PERSONNEL		PLAN	
SPACE TYPE			
Private Office	3		
Workstation	82		
Receptionist	1		
Total	86		
Office : Workstation	3% 95%		

COLLABORATION		PLAN	
SPACE TYPE	SEATS	SPACE	SEATS
Conference	16	1	16
Conference	8	1	8
Meeting	4	1	4
Meeting	2	3	6
Café [Open]	30	1	30
Open Meeting	8	1	8
Open Meeting	6	1	6
Total	78	9	78
Collab. Seats/Person:	0.91/Person		

Suite C: 14,658 RSF Pre-built



Suite A: 6,547 RSF Pre-built

MADISON AVE

OPEN OFFICE TEST-FIT

FLOORS 8-10: 24,794 RSF

PERSONNEL

SPACE TYPE	PLAN
Private Office	4
Workstation	138
Receptionist	1
Mail Personnel	1
Total	144
Office : Workstation	3% 97%
RSF/person	172 RSF/P

COLLABORATION

SPACE TYPE	SEATS	PLAN	
		SPACE	SEATS
[CLOSED]	Conference	20	1 20
	Conference	12	1 12
	Conference	8	2 16
	Conference	6	3 18
	Meeting	4	1 4
	Meeting	3	3 9
Phone Room	2	3 6	
[OPEN]	Café	19	1 19
	Lounge	11	1 11
Total		16	115
Collaborative Seats/Person:		0.80/Person	



57TH ST

56TH ST

MADISON AVE



OFFICE INTENSIVE TEST-FIT

FLOORS 8-10: 24,794 RSF

PERSONNEL

SPACE TYPE	PLAN
Large Private Office	5
Private Office	31
Interior Office	8
Total Offices	44
Workstation	16
Receptionist	1
Mail Personnel	2
Total	63

Office : Workstation	70%	30%
RSF/person	394	RSF/P

COLLABORATION

SPACE TYPE	SEATS	PLAN	
		SPACE	SEATS
[CLOSED] Conference Conference Conference Conference Meeting	16	1	16
	14	1	14
	8	1	8
	6	1	6
	4	2	8
[OPEN] Café Reception	16	1	16
	10	1	10
Total		8	78

Collaborative Seats/Person: 1.24/Person



57TH ST

56TH ST

MADISON AVE



OPEN OFFICE TEST-FIT

FLOOR 20: 15,926 RSF

PERSONNEL

SPACE TYPE	PLAN	
Private Office	3	
Workstation	108	
Receptionist	1	
Total Offices	112	
Office : Workstation	3%	97%
RSF/person	142	RSF/P

COLLABORATION

SPACE TYPE	SEATS	PLAN	
		SPACE	SEATS
[CLOSED] Conference Conference Meeting Meeting Phone Room Phone Booth	14	1	14
	10	2	20
	4	1	4
	3	1	3
	2	1	2
	1	3	3
[OPEN] Café Lounge	26	1	26
	10	1	10
Total		11	82
Collaborative Seats/Person:		0.73/Person	



57TH ST

56TH ST

MADISON AVE



OFFICE INTENSIVE TEST-FIT

FLOOR 20: 15,926 RSF

PERSONNEL

SPACE TYPE	PLAN	
Executive Private Office	2	
Large Private Office	6	
Private Office	15	
Workstation	18	
Receptionist	1	
Total Offices	42	
Office : Workstation	55%	45%
RSF/person	379	RSF/P

COLLABORATION

SPACE TYPE	SEATS	PLAN	
		SPACE	SEATS
Conference	12	1	12
Conference	8	1	8
Meeting	6	1	6
Meeting	4	2	8
Phone	2	1	2
Café	22	1	22
Lounge	14	1	14
Reception/Lounge	4	1	4
Total		9	76
Collaborative Seats/Person:		1.81/Person	

OPEN CLOSED



57TH ST

56TH ST

MADISON AVE



OPEN OFFICE TEST-FIT

FLOOR 23: 11,157 RSF

PERSONNEL

SPACE TYPE	PLAN	
Executive Office	2	
Private Office	3	
Workstation	48	
Receptionist	1	
Total Offices	54	
Office : Workstation	6%	91%
RSF/person	207	RSF/P

COLLABORATION

SPACE TYPE	SEATS	PLAN	
		SPACE	SEATS
Conference	16	1	16
Meeting	5	1	5
Meeting	4	1	4
Phone Room	2	1	2
Phone/Wellness	1	1	1
Café	19	1	19
Lounge Seating	2	1	2
Total		7	49
Collaborative Seats/Person:		0.91/Person	

CLOSED
OPEN



57TH ST

56TH ST

MADISON AVE



OFFICE INTENSIVE TEST-FIT

FLOOR 23: 11,157 RSF

PERSONNEL

SPACE TYPE	PLAN	
Large Private Office	5	
Private Office	10	
Workstation	12	
Receptionist	1	
Total Offices	28	
Office : Workstation	54%	46%
RSF/person	398	RSF/P

COLLABORATION

SPACE TYPE	SEATS	PLAN	
		SPACE	SEATS
Conference	16	1	16
Conference	8	1	8
Phone/Wellness	1	1	1
Phone	2	1	2
Café	19	1	19
Lounge Seating	6	1	6
Total		6	52
Collaborative Seats/Person:		1.86/Person	

OPEN
CLOSED



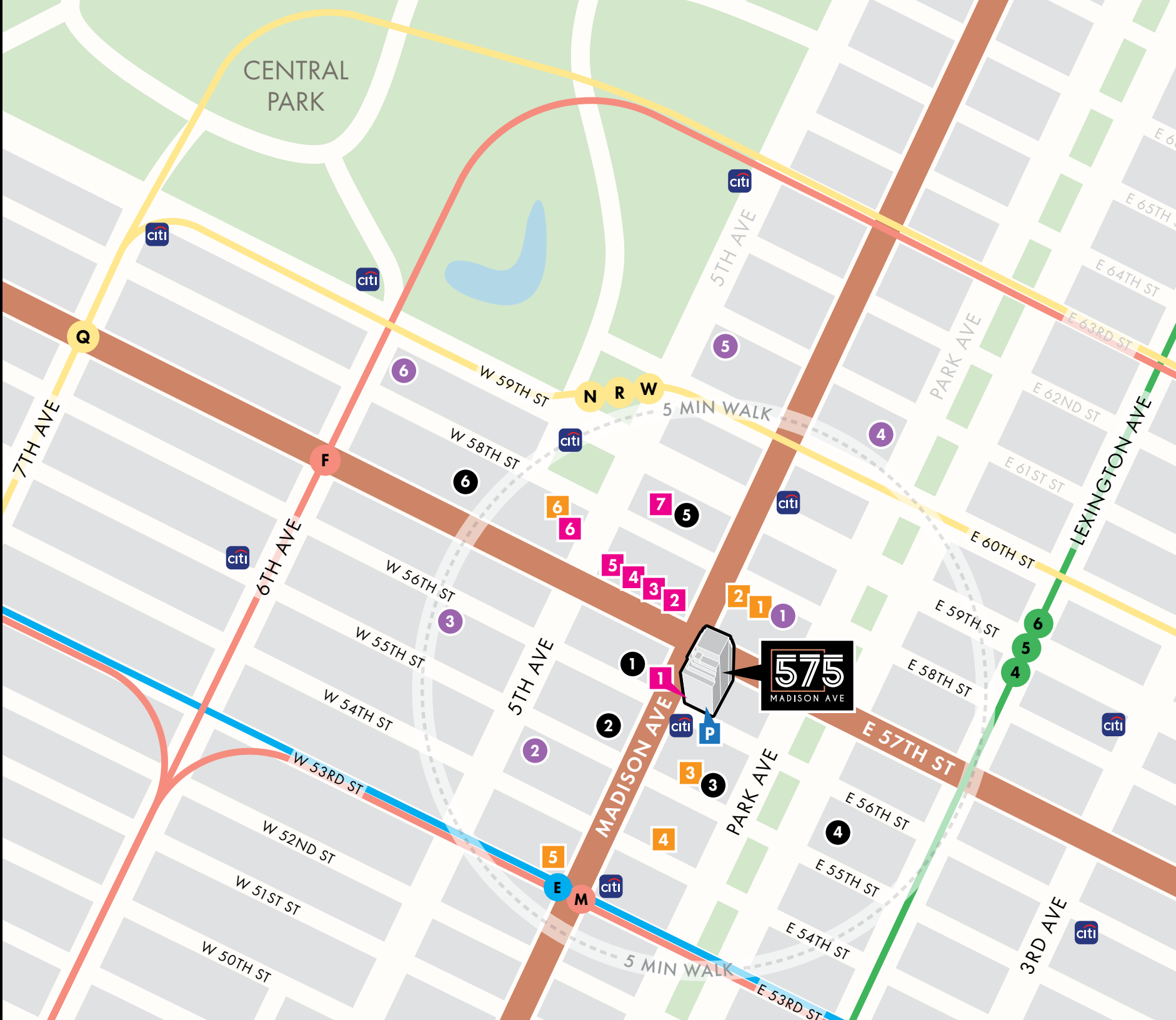
57TH ST

56TH ST

MADISON AVE



YOU'RE IN THE RIGHT PART OF TOWN



OFFICES

1. 590 Madison Ave
2. 550 Madison Ave
3. Park Avenue Tower
4. 425 Park Ave
5. 767 Fifth Ave
6. 9 West 57th St

HOTELS

1. Four Seasons
2. St. Regis
3. Whitby
4. Loews Regency
5. Pierre
6. Ritz-Carlton

RETAIL

1. **575 RETAIL**
Breitling
First Republic Bank
ReBag
Oliver Peoples
Vacheron Constantin
2. Dior
3. Chanel
4. Burberry
5. Louis Vuitton
6. Bergdorf Goodman
7. Apple

RESTAURANTS

1. Tao Uptown
2. Serafina Osteria
3. Aquavit
4. Nerai
5. Empellon
6. BG

P 100+ VALET PARKING GARAGE WITH DIRECT BUILDING ACCESS

citi CITIBIKE LOCATIONS

TRANSIT LINES

A NEIGHBORHOOD THAT SPEAKS FOR ITSELF



BUILDING SPECIFICATIONS

- Building standard hours of operation are 24/7.
- There is 1 freight elevator and 8 passenger elevators (2 banks of elevators, 1 elevator bank for low rise and 1 for high rise, 4 elevators each).
- Slab heights: The 1st floor height from floor to slab is 13 or 14 feet. The slab heights are 10 feet floor to slab from the 2nd floor up to the 25th floor. The 26th and 27th floors are 13 feet floor to slab.
- Telephone and telecommunications structure: Verizon, Sprint and Time Warner are available at the building. The building is cable ready. Every floor has electrical closets and connections.
- Building terraces: Floors 11, 14, 17, 21, 24 and 26
- Valet garage parking with direct lobby access.
- New HVAC and electrical systems throughout the building.
- Bipolar ionization units installed Summer 2020.

