



**BETWEEN FIFTH AVENUE AND
AVENUE OF THE AMERICAS**

24-28 WEST 25TH STREET

New York, NY 10010

- 11,000 rentable square feet (RSF) available
- Sublandlord will consider a division of 5,500 RSF

DETAILS

| | |
|---------------------|---|
| SPACE: | Entire 3 rd floor |
| TERM: | Through 8/30/2027 Direct extension is available |
| RENT: | Upon request |
| ELECTRICITY: | Directly metered |
| ESCALATIONS: | 3% per annum increase and a proportionate share of any increase in real estate taxes |
| POSSESSION: | Arranged |

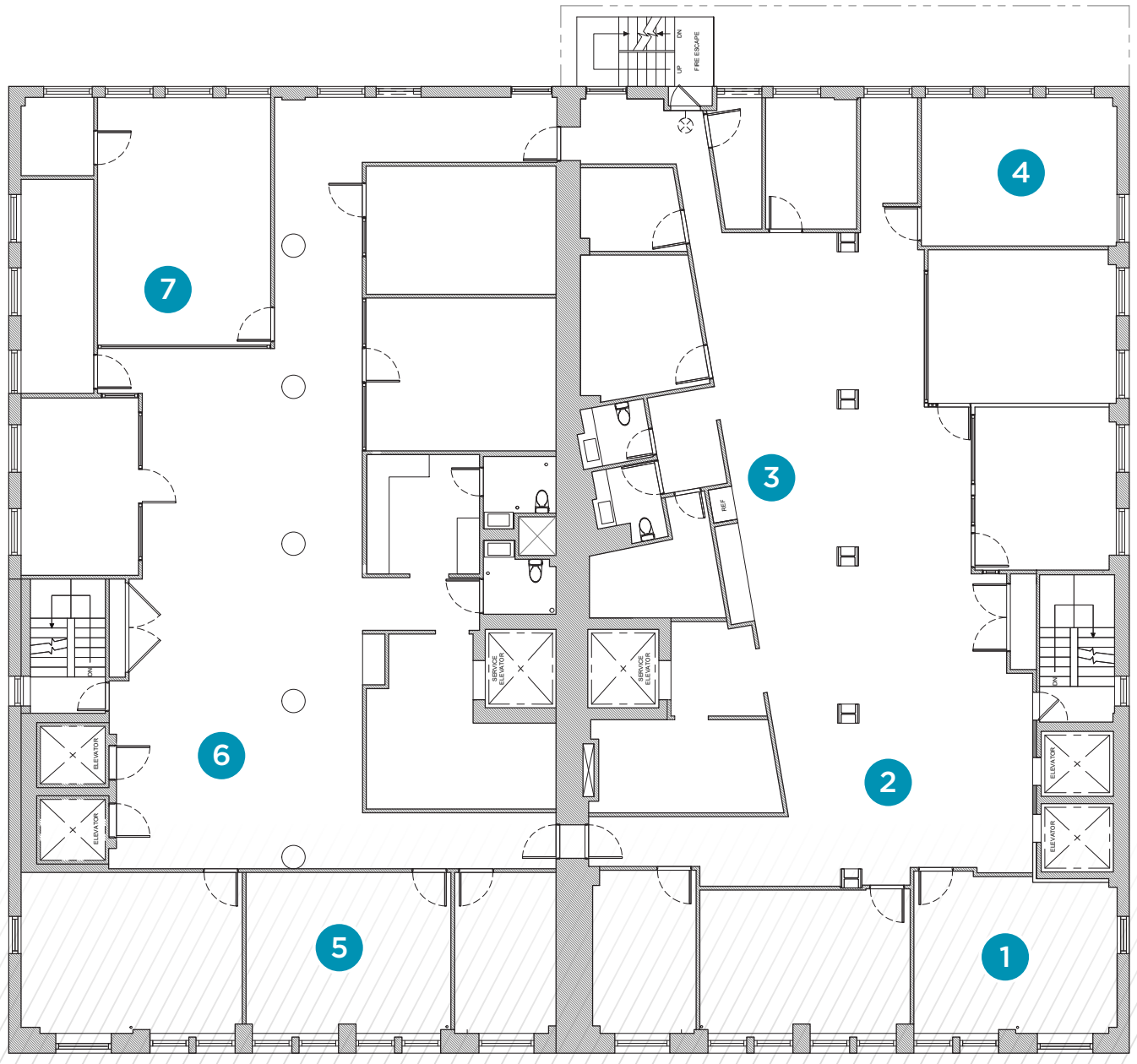
BUILDING & SPACE DETAILS

- Well respected landlord
- Attended lobby
- Space comes furnished and wired
- Large operable windows
- Tenant controlled air conditioning unit
- Convenient access to Madison Square Park and the 6, F, M, R and W subways
- Local restaurants include; Etaly, Sagaponack, La Pecora Bianca, Mark's Off Madison, The Clocktowr, Eleven Madison Park , and Kraam Thai.



24-28 W 25TH ST.

Floorplan



WEST 25TH STREET

