

550
SEVENTH AVE

PARTIAL 4TH FLOOR

NEWLY RENOVATED SHOWROOM/OFFICE SPACE



ADDRESS
550 7TH AVE

RENT
INQUIRE

PREMISES
PARTIAL 4TH

POSSESSION
IMMEDIATE

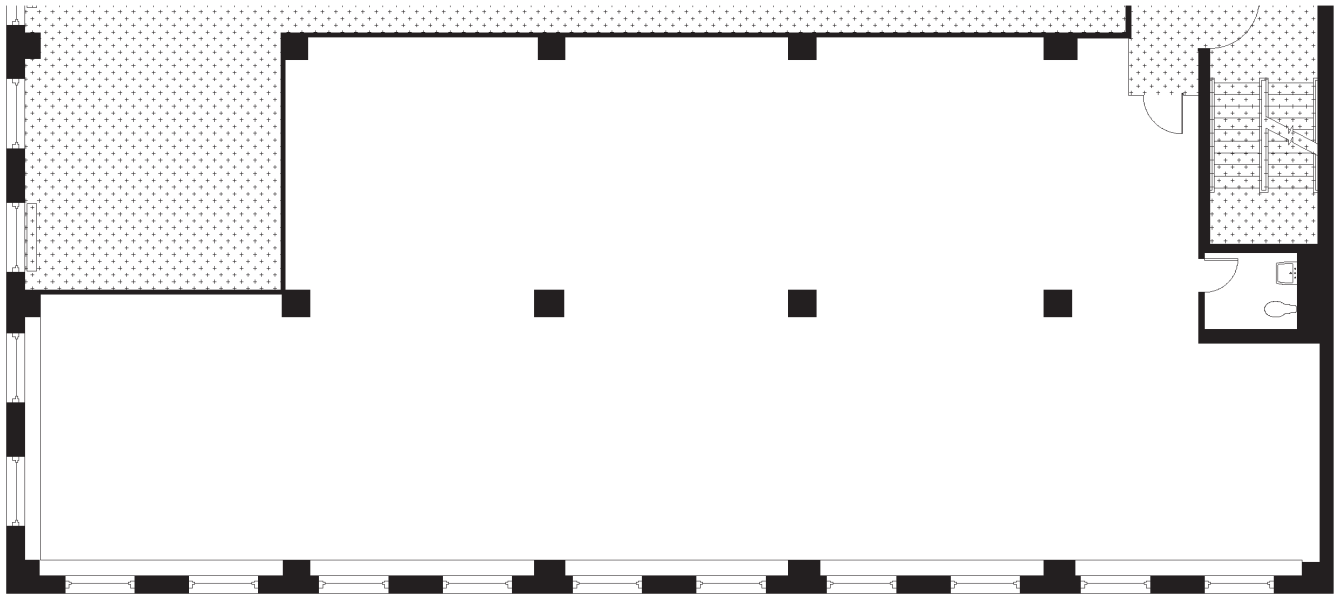
SIZE
5,503 RSF

TERM
NEGOTIABLE

SPACE DETAILS

- BRIGHT SPACE W/ EXCELLENT NATURAL LIGHT
- MODERN FINISHES
- CAFE STYLE PANTRY
- HIGH, EXPOSED CEILINGS
- CONCRETE FLOORS
- OWNERSHIP WILL BUILD TO SUIT

FLOOR PLAN



THE BUILDING

CORNER OF W 39TH ST AND 7TH AVE
24/7 ACCESS
ATTENDED LOBBY

NEARBY

PENN STATION / MOYNIHAN
GRAND CENTRAL TERMINAL
PORT AUTHORITY BUS TERMINAL
BRYANT PARK

