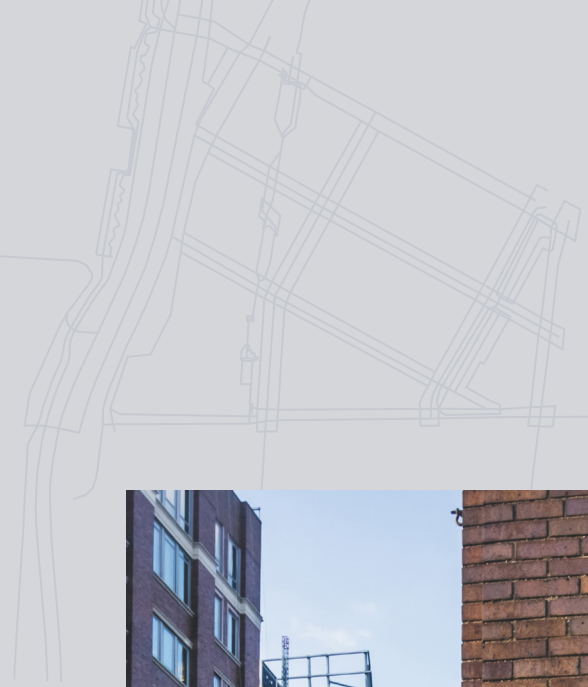


# 405 West 13<sup>TH</sup> 13<sup>ST</sup>

BUILT & FURNISHED 6K SUBLEASE





# High-End

PREBUILT IN THE HEART OF THE

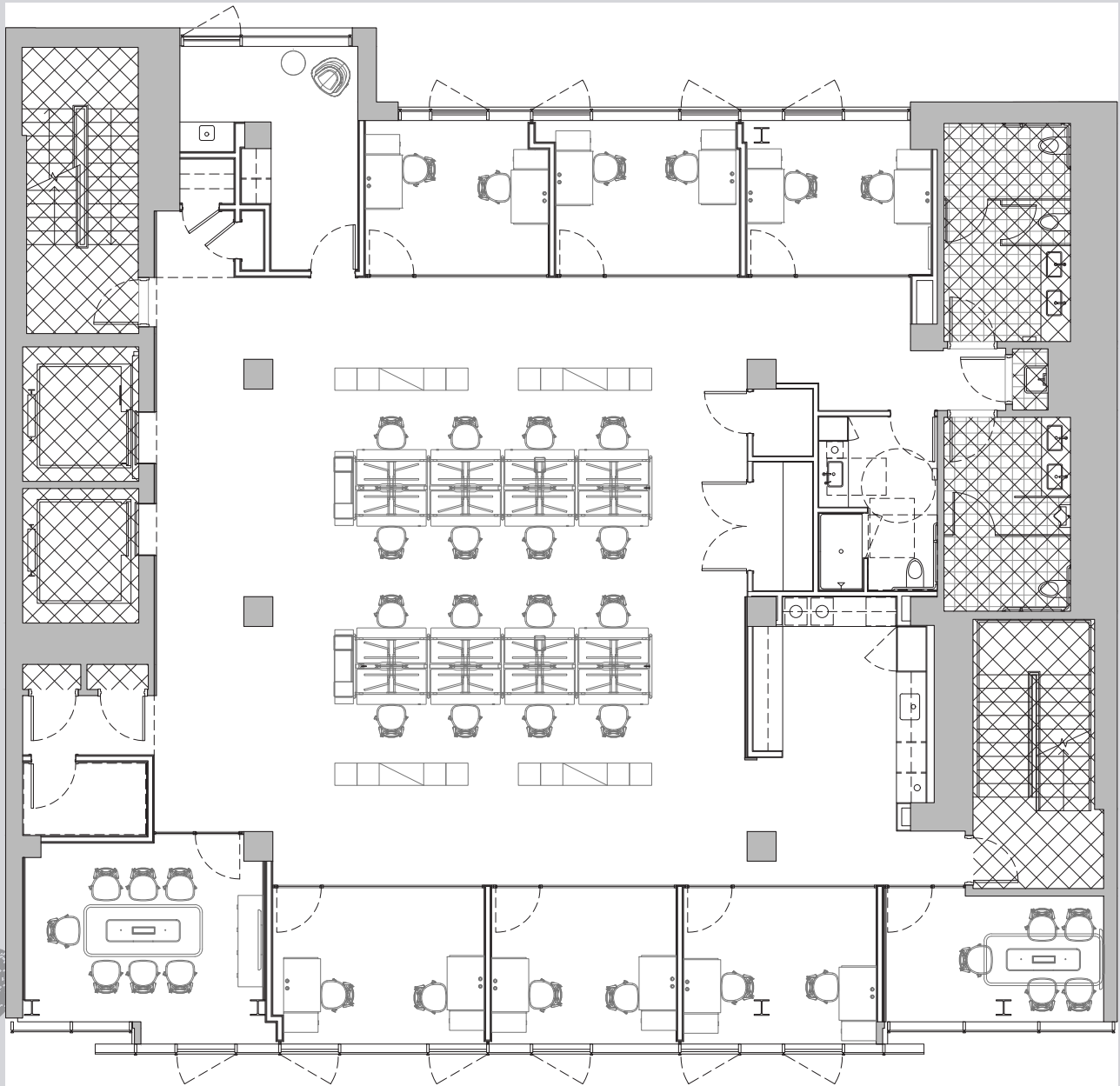
# Meatpacking District

ENTIRE 5<sup>TH</sup> FLOOR  
**5,701** RSF

- Term through December 2032
- Full glass front offices + breakout/ meetings rooms
- Open collaborative pantry with top of the line appliances
- High End Installation in New Construction Portion of the Building



EXCLUSIVE ROOF DECK FOR BUILDING TENANTS



# ENTIRE 5<sup>TH</sup> FLOOR 5,701 RSF

- 6 double offices
- 1 conference room
- 1 meeting room
- Open trading area for 16
- 1 meditation room
- Open pantry
- Executive bathroom with shower

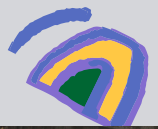




## ENTIRE 5<sup>TH</sup> FLOOR



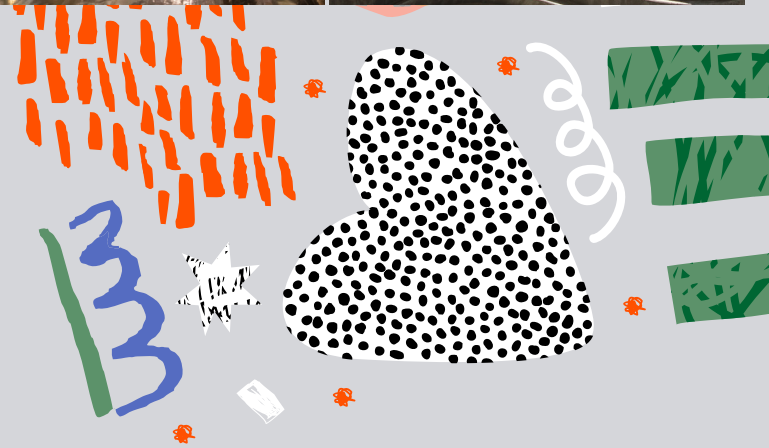




LITTLE ISLAND PARK



CHELSEA MARKET



THE HIGHLINE



Welcome to the Meatpacking District.

A 24-hour neighborhood bordered by Chelsea to the north and the West Village to the south.

In the last 20 years, fashion and graphic designers, architects, artists, restaurateurs, world-renowned stylists and corporate headquarters have moved in alongside existing meatpacking plants.

This has created an incredibly interesting and diverse dynamic that is fitting, given all of the inherent contrasts of the area.

# IN THE HEART OF THE Meatpacking District

405  
West  
13<sup>TH</sup>  
ST

