

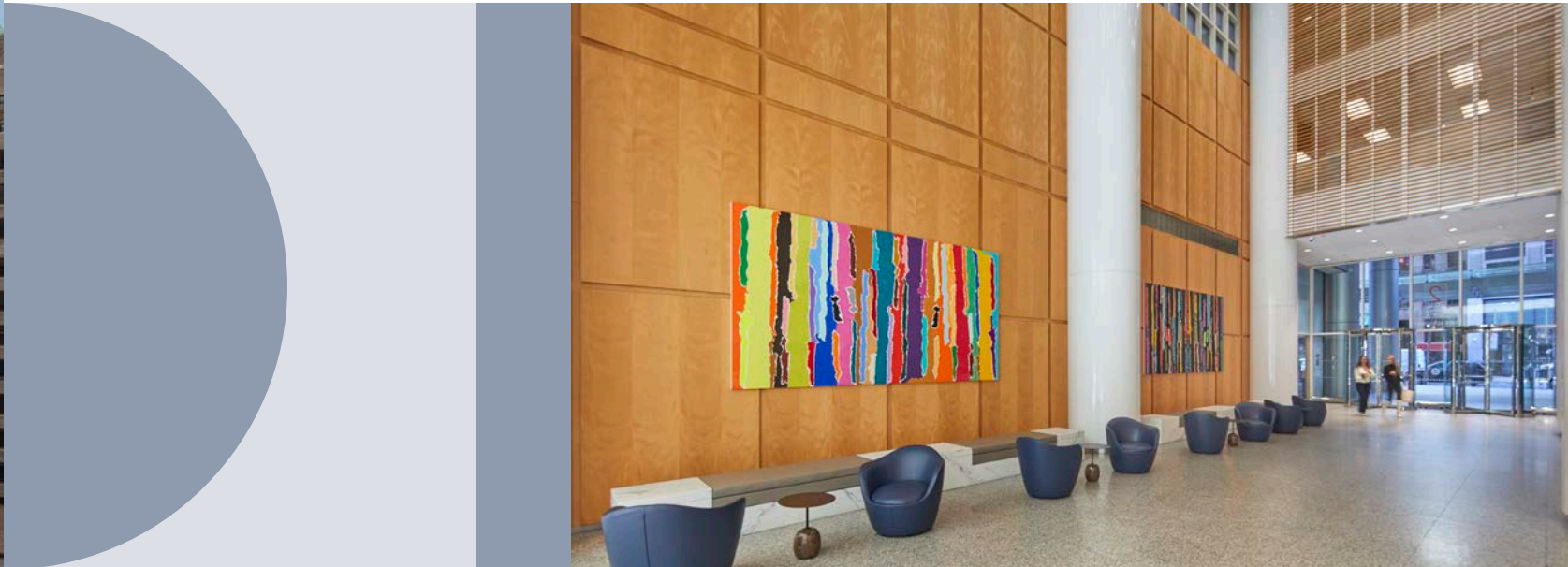
GRAND
CENTRAL
TOWER

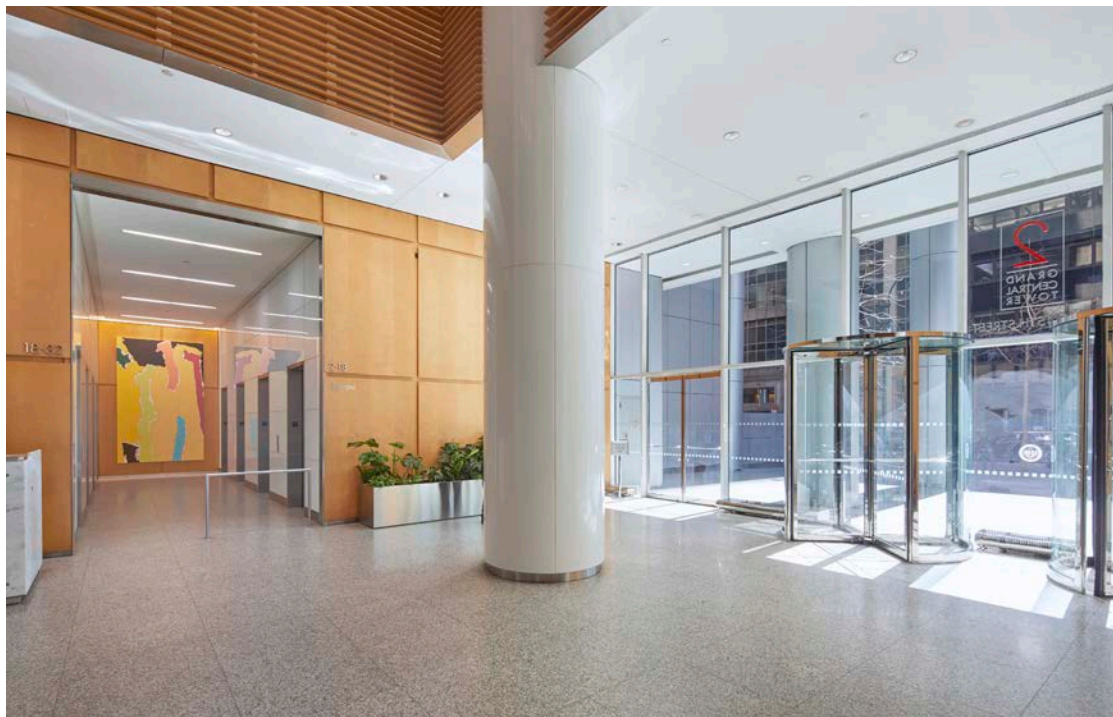




STELLAR LOCATION

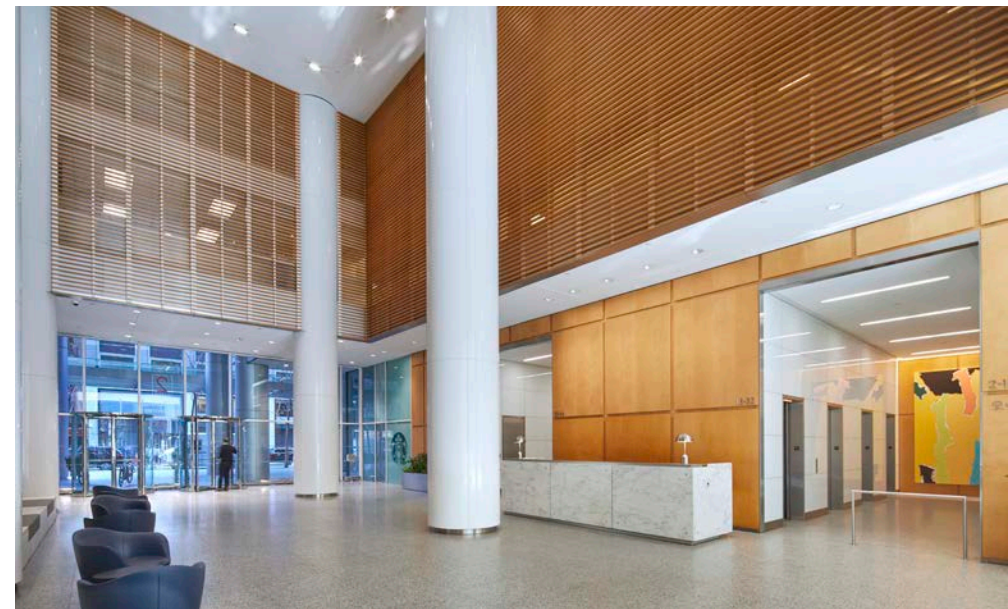
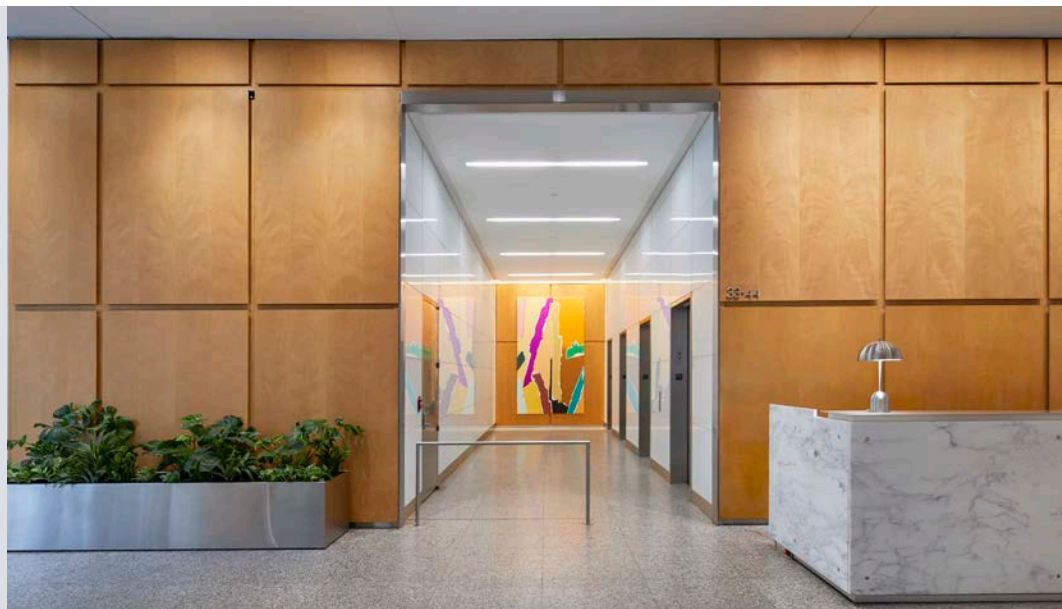
Tenants have access to abundant dining options for a quick bite for lunch to a sit down dinner and after work drinks. Fitness centers, boutiques, museums, and renowned hotels are also easy to come by. The Plaza Hotel, The Edison Hotel, and The Waldorf Astoria are within walking distance for impressing visiting clients.





2 GCT is located steps away from one of New York's most iconic transportation hubs and offers ideal workspaces for a variety of tenants.

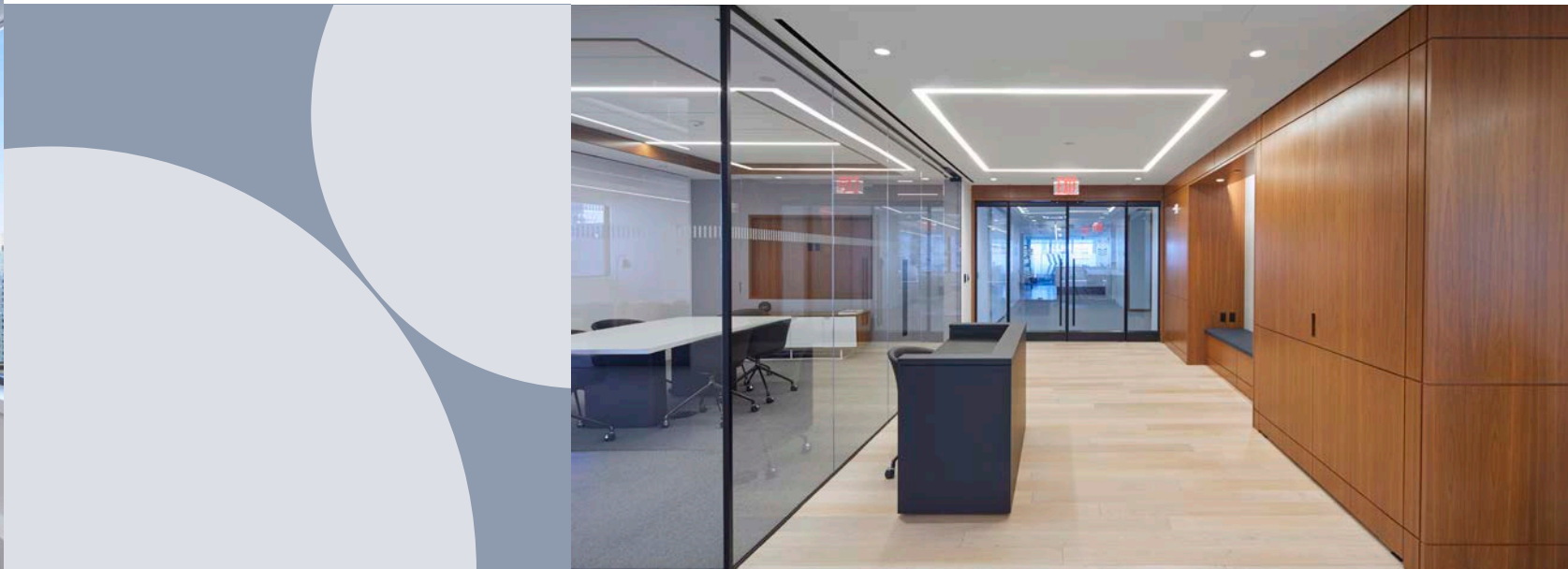
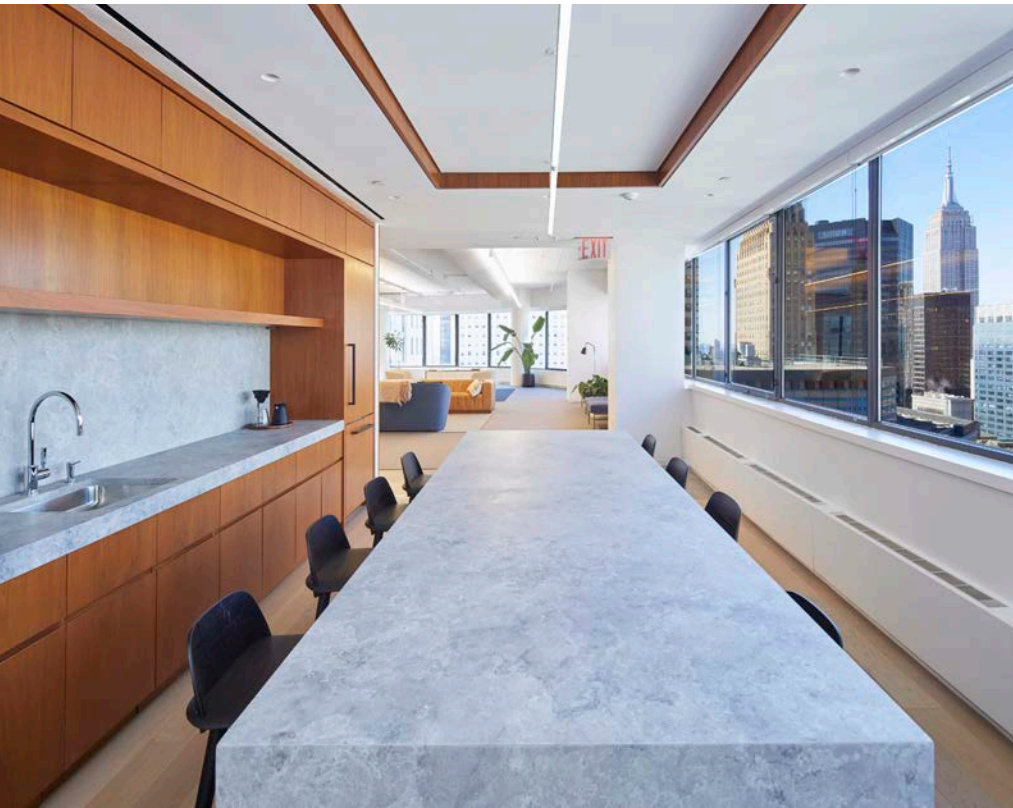
The renovated lobby is expansive and features local artwork for employees and visitors to enjoy. It has soaring ceiling heights and tons of natural light that keep the entryway aglow.

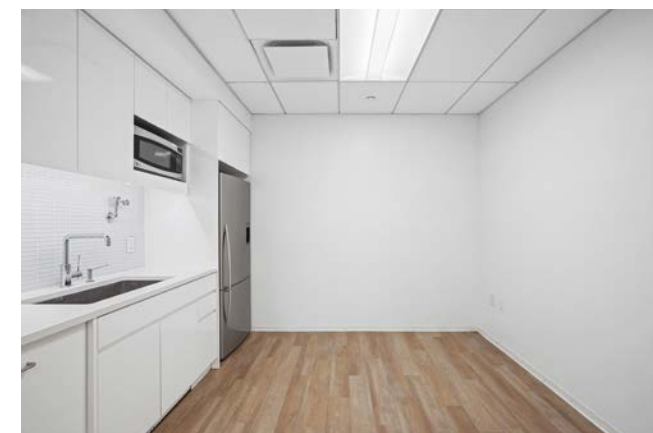
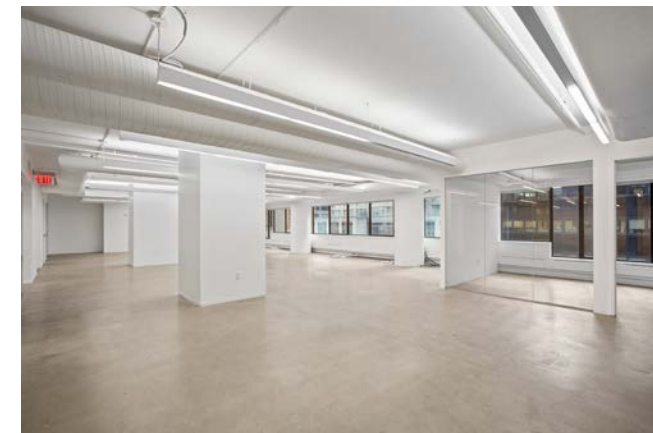




SUPERIOR SPACES

The tower has several boutique full floor availabilities as well as new or recently prebuilt spaces. Offices along the perimeter of the building have neat, panoramic windows that curve with the tower's shape. Glassy conference rooms and roomy sitting areas bring light and air to the workplace. The large, open floor plates allow for collaborations of all sizes and layouts.





P5
5,862 RSF

Space features 2 conference rooms, 2 offices, pantry & open area.





SPLENDID VIEWS

Enjoy the front-seat view to bustling Midtown below, and across the way to iconic buildings such as The Chrysler Building, Empire State Building, and One Vanderbilt. The East River shimmers to the East. Bryant Park buzzes with activity to the West. Let the natural light flood the expansive floor plates, those iconic views set off creativity and innovation, and see your workforce flourish.



SUPREME COMMUTES

2 GCT is located half a block from Grand Central Terminal which provides convenient access to the LIRR via the brand new Grand Central Madison station, Metro-North, and 4, 5, 6, 7, and 42nd Street shuttle subway lines. It offers commuters unmatched accessibility to all parts of the city.



STRIKING FACTS



2 GCT tenants benefit from access to a larger talent pool because of its ideal location. It is steps from Grand Central Terminal, with access to Metro North, LIRR, and 9-Subway Lines' commuters.



The location offers a vast variety of retailers, restaurants, amenities to all levels, as well as parks and public areas for your workforce.



Enjoy the convenience of having some of the best lodging and dining in the world, to host, entertain and impress clients and business partners.



2 GCT owns the air rights to the properties to the East and West, ensuring no building will surpass it in height



An early adapter in energy efficiencies and tenant managed climate control, this tower remains an influencer in the Class A space.

- RESTAURANTS/BARS/COFFEE**
1. Maison Kayser
 2. Bento Sushi
 3. Le Botaniste
 4. Joe & the Juice
 5. Chopt
 6. Le Pain Quotidien
 7. Inday
 8. Dos Toros
 9. Los Tacos No.1
 10. Luke's Lobster
 11. The Capital Grille
 12. Aretsky's Patroon
 13. Just Salad
 14. Madman Espresso
 15. Gregory's Coffee
 16. Starbucks
 17. Bondi Sushi
 18. Grand Central Market
 19. Cafe Grumpy
 20. Sweetgreen
 21. Urbanspace
 22. Campbell Apartment
 23. Bierhaus NYC
 24. Patis Bakery
 25. Chop & Go
- HOTELS**
26. Grand Hyatt
 27. The Westin NY Grand Central
 28. Club Quarters Hotel
- GYMS**
29. Equinox
 30. New York Sports Club

