

NY, New York City - 100 Park Avenue

OVERVIEW



100 Park Avenue, New York City,

For those wanting to do business in a central location, look no further than 100 Park Avenue. Brilliantly located in the heart of midtown, the 36-storey Emporis Building on prestigious Park Avenue is at the centre of everything. With an opulent reception and dazzling views of the Chrysler Building, it's the ideal place to take your business to new heights.

After work, world-famous Broadway theatres, Times Square, Rockefeller Centre and the upscale shopping districts of Fifth Avenue and Madison Avenue are all close by.

FEATURES

- City/Town Centre
- Meeting rooms
- Restaurant
- Café
- Vending machines
- Suspended Ceilings
- Major transport links
- Wheelchair accessible
- Common areas
- Business Lounge

NEAREST TRANSPORT

Bus stop

Grand Central Terminal: 0.0 Miles

Public parking

SP+ Parking: 0.1 Miles

Train

Grand Central Station: 0.1 Miles

NY, New York City - 100 Park Avenue

Metro

Grand Central - 42 St: 0.1 Miles

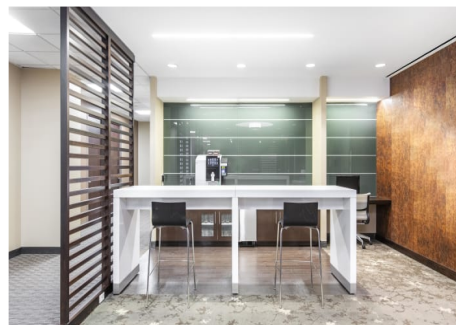
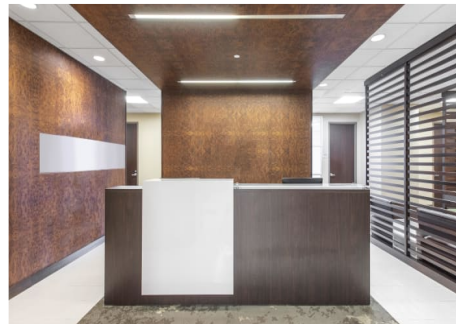
IT SOLUTIONS - PRIVATE OFFICES ONLY

- Dedicated bandwidth
- Priority internet
- Storage space
- Private static or Public IP address

Set-up fees will apply

Services subject to availability

GALLERY



NY, New York City - 100 Park Avenue

