

369

LEXINGTON AVENUE

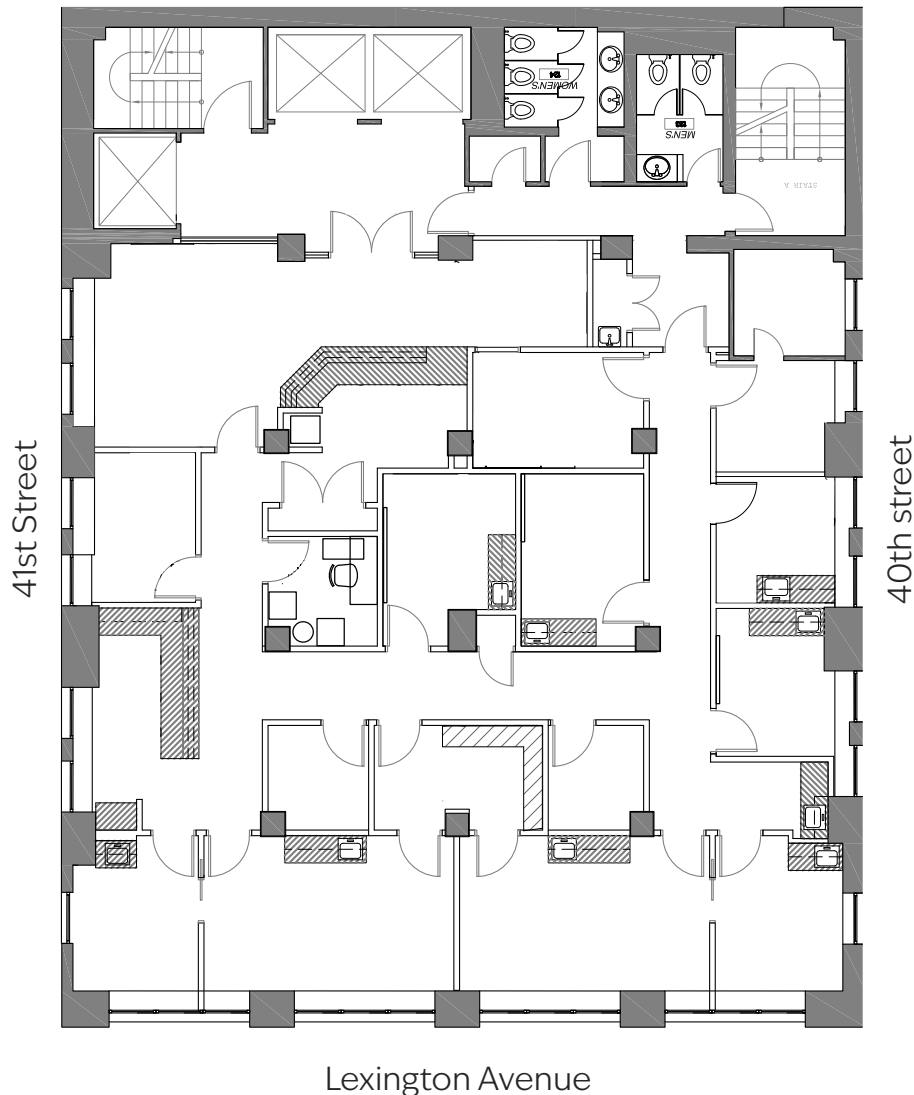


Entire 10TH Floor Sublease

6,134 RSF

Possession:
Immediate

Term:
3/31/2027



- Glass front, double door entry directly off elevators
- Large front reception with seating and rear reception
- 2 large plumbed procedure rooms with adjoining exam rooms
- 4 individual exam rooms
- 5 offices (2 windowed/3 internal)
- Filing room with cabinets
- Existing furniture available







369 LEXINGTON AVENUE