

Prime sublease opportunity – Meatpacking District

FOR SUBLEASE

400 West 14th Street, New York, NY 10017



SPACE PROFILE

6,449 SF each

Entire 3rd & 4th floors

Through 09/2030

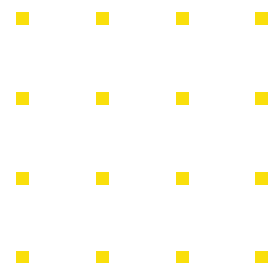
Term

Negotiable

Rental rate

90 Days

Availability



KEY HIGHLIGHTS

Fully Built, Move-In Ready Space

- Modern, high-end installation ideal for creative, tech, media, or boutique users

Flexible Leasing

- Floors can be leased separately or together, connected by an internal staircase – multiple configurations available

Bright & Airy

- Expansive windows with iconic corner view of 14th Street & 9th Avenue

Unbeatable Location

- In the heart of Meatpacking—steps from the High Line, Chelsea Market, Little Island & top restaurants

Plug-and-Play Convenience

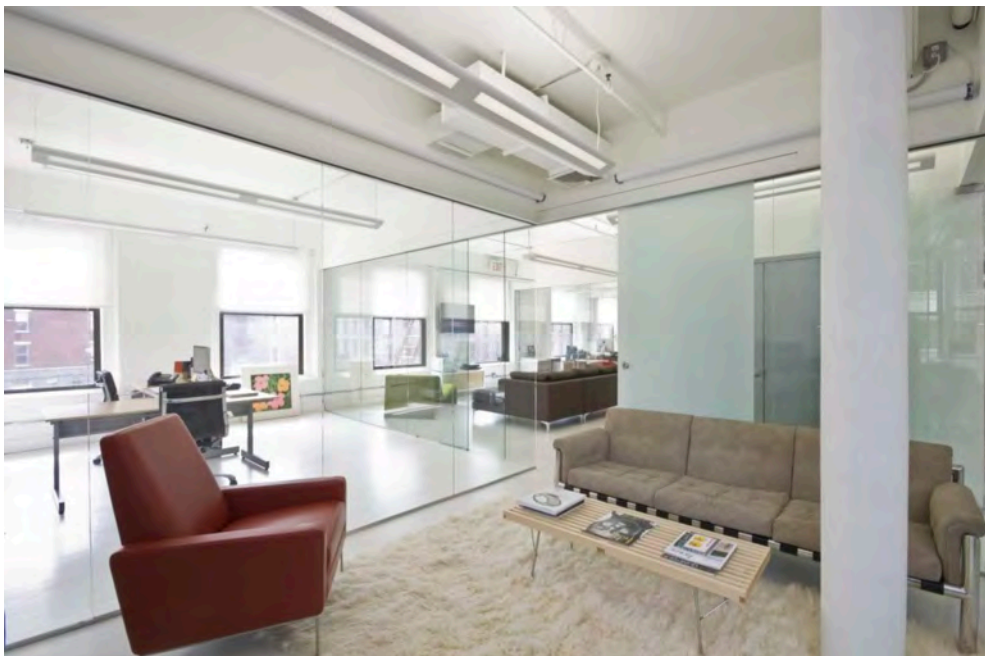
- Built conference rooms, private offices, open workspace & kitchen/lounge

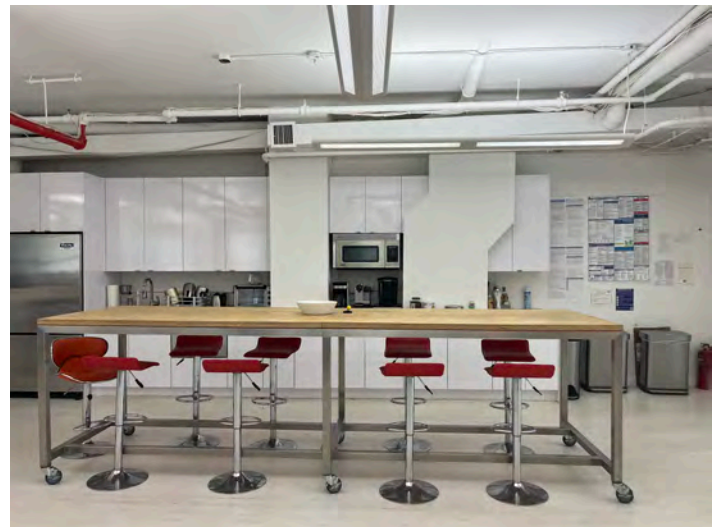
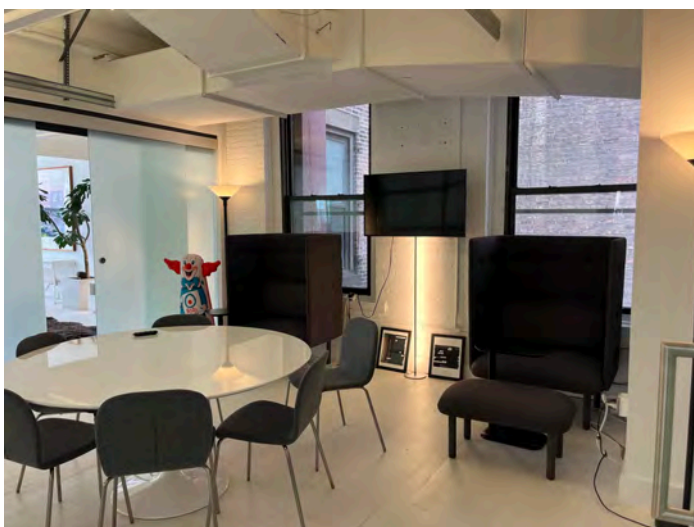
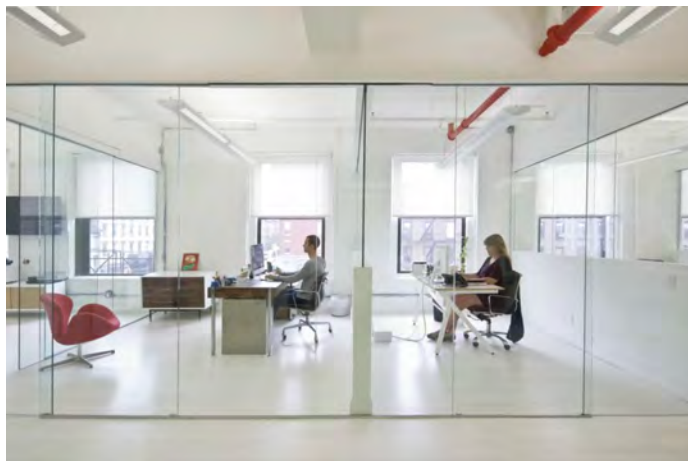
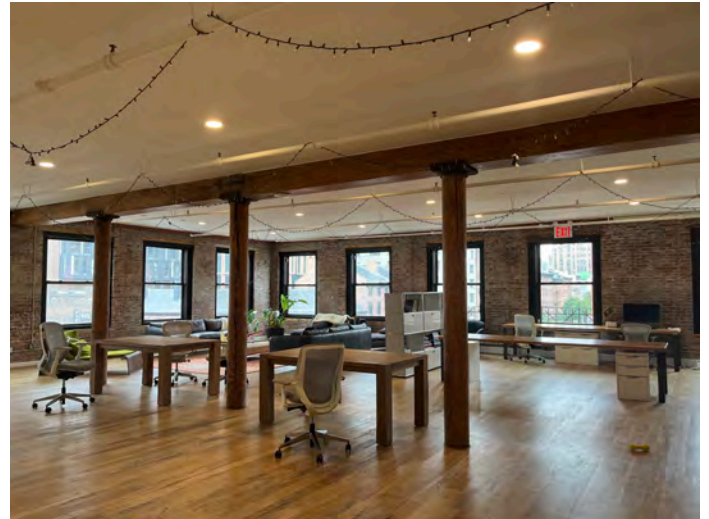
Vibrant Neighborhood Energy

- Perfect for users who want to be where it's all happening

Excellent Transit Access

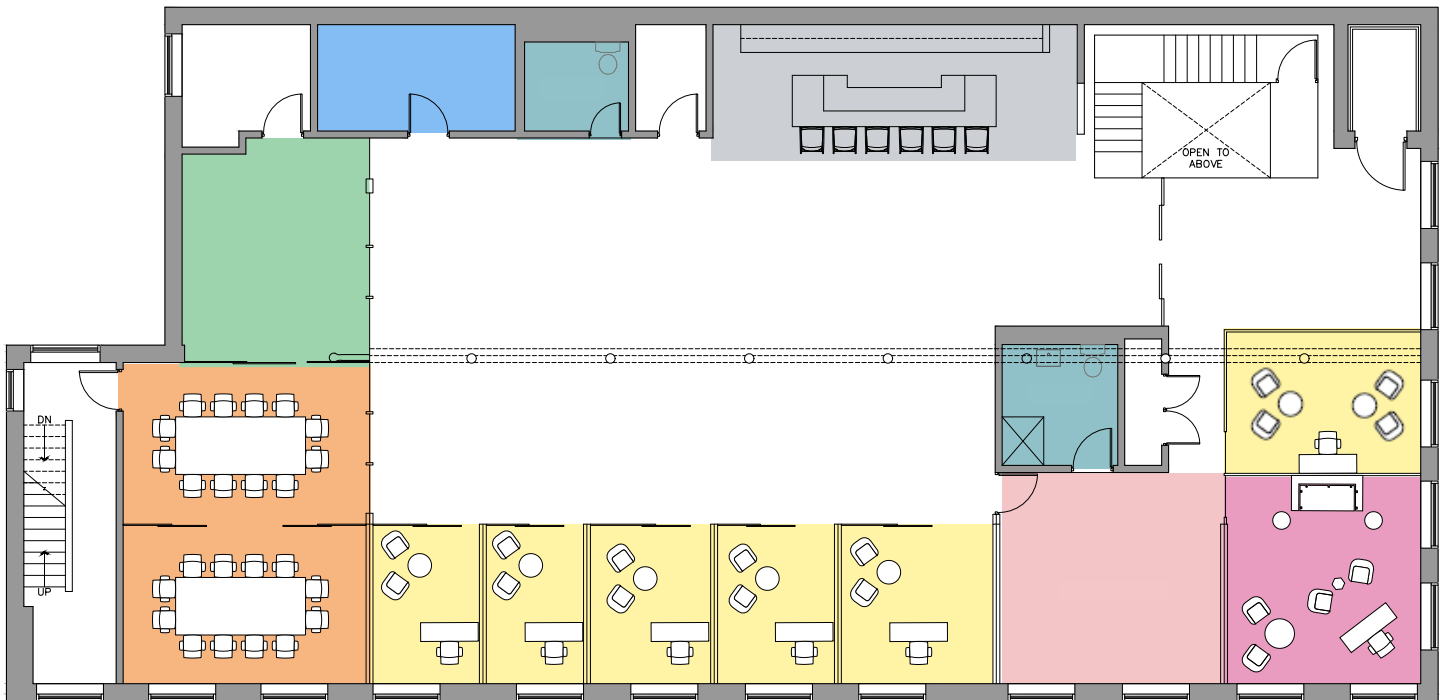
- Near A/C/E, L, 1/2/3 subway lines, PATH trains to NJ, and nearby bike paths





3RD FLOOR

6,449 SF

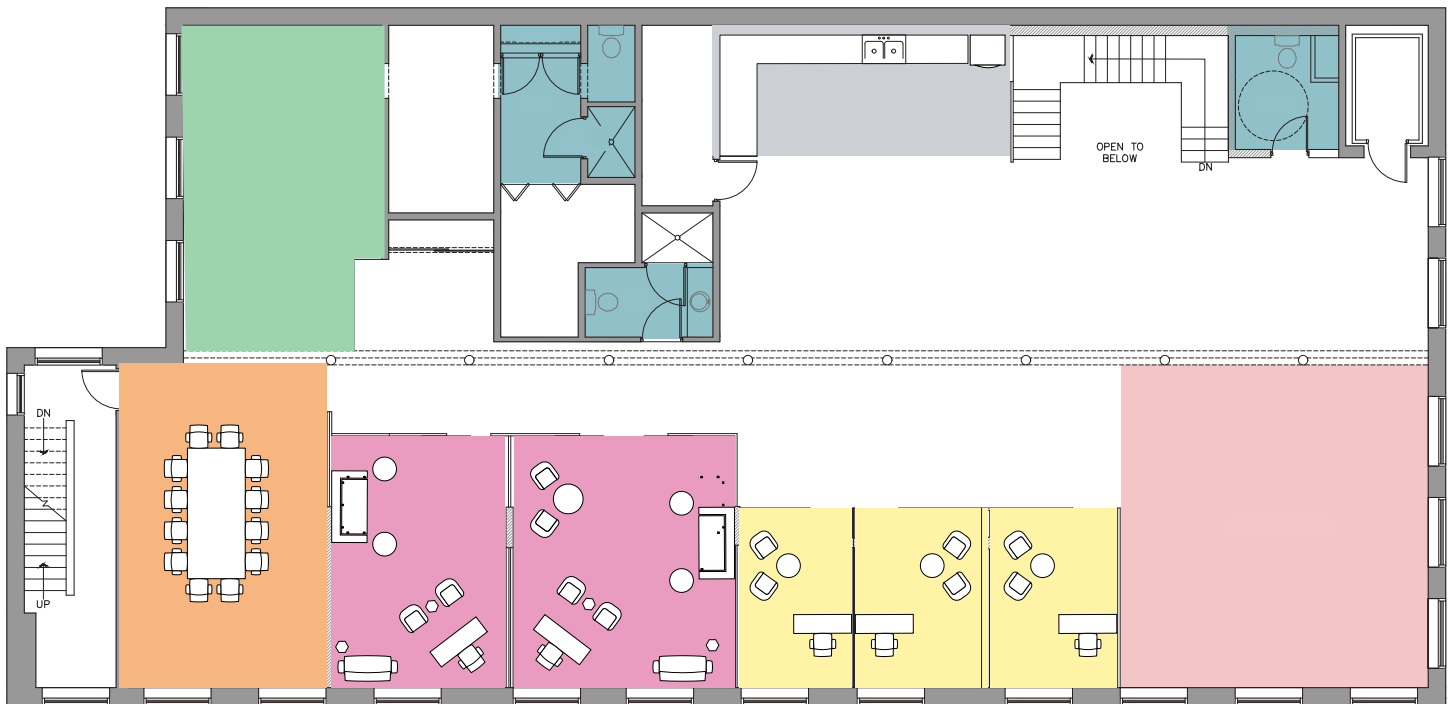


SPACE OVERVIEW

- 6 offices
- 1 large conference room (can be divided into 2 conference rooms)
- 1 executive office
- 1 wellness room/mother's room
- 2 bathrooms
- 1 open pantry
- 1 game room
- 1 sitting/open meeting room

4TH FLOOR

6,449 SF



SPACE OVERVIEW

- 3 offices
- 1 large conference room
- 2 executive offices
- 3 bathrooms, 1 w/private shower
- 1 open pantry
- 1 game room
- 1 lounge area