



# Premium Rock Center Tower Floor Sublease

## 75 Rockefeller Plaza

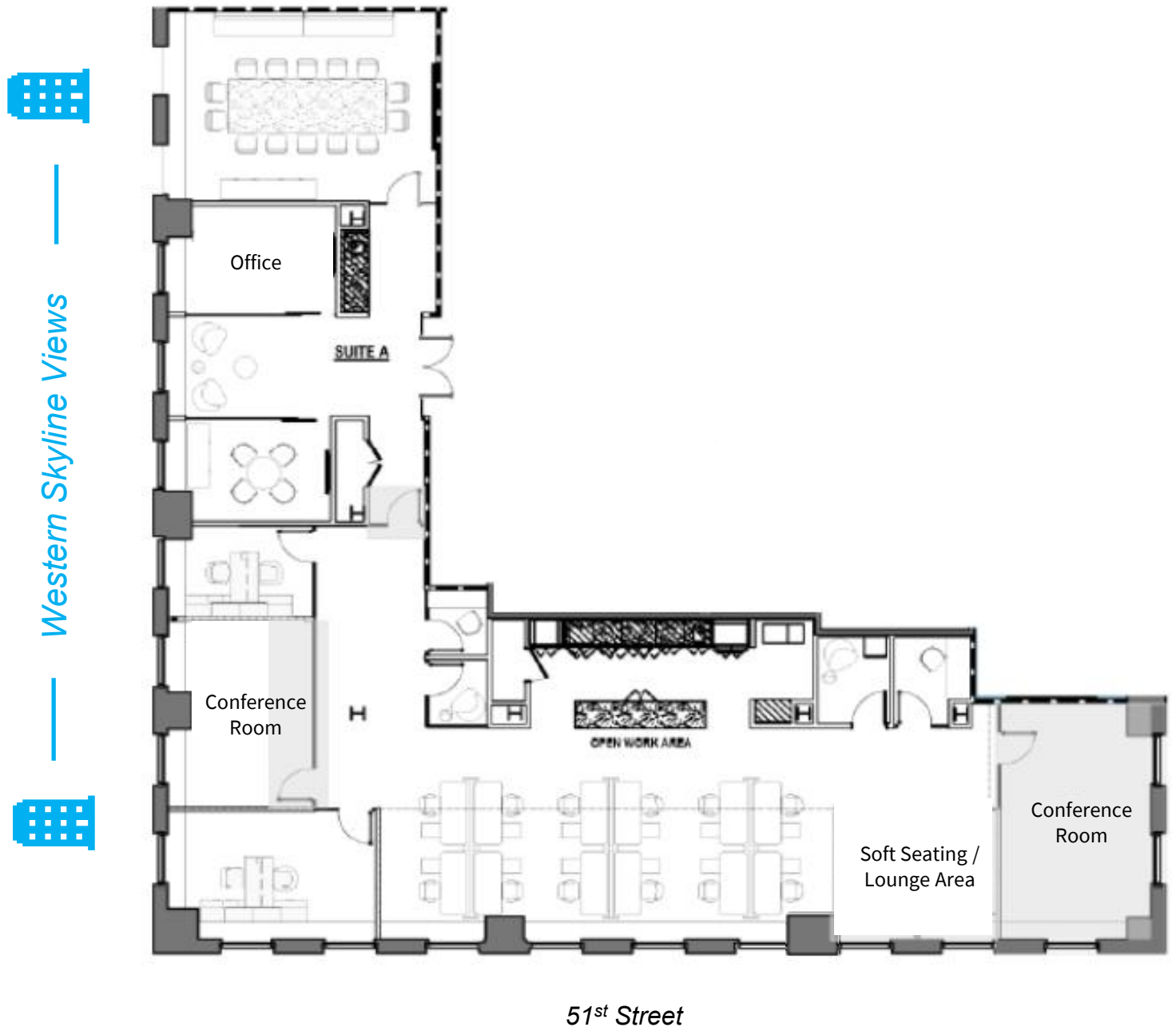
Partial 26<sup>th</sup> Floor | 6,606 RSF | Immediate Possession

### Plug and Play Opportunity

- Newly prebuilt, furnished and wired installation with views of the **Empire State Building and 1 World Trade Center**
- Space features **4 offices / break out rooms, 2 conference rooms (can be converted to additional offices) 1 board room, 4 zoom rooms, open area with 12 workstations** and a high-end pantry
- Term through **6/30/2028**
- Building features “**Club 75**” **amenity** with conferencing facility, social club, lounge, gallery and bar
- New RXR **WorxWell** high-end furnished prebuilt

# Floorplan

Partial 26<sup>th</sup> Floor: 6,606 RSF



- **4 Offices / Break Out Rooms**
- **2 Conference Rooms (*can be converted to additional offices*)**
- **1 Board Room**
- **4 zoom rooms**
- **Open area with 12 workstations**
- **High-end Pantry**



















## Club 75 Amenity Photos

